



Rodney Road, London SE17

Price £535 per week - Furnished







Description

JLL are pleased to present a 1 bedroom apartment in the sought after Rutherford Heights, Trafalgar Place.

Situated on the top floor (9th) this contemporary 1 bedroom apartment is offered fully furnished and comprises a large open plan reception with private balcony and stunning uninterrupted views of The Shard, City skyline and Canary Wharf. Fully fitted kitchen with Bosch appliances, spacious double bedroom with fitted wardrobes, luxury bathroom, wood flooring and excellent storage space.

Trafalgar Place is part of the Elephant Park regeneration project and the development benefits from 24 hour concierge, exceptional roof garden, bicycle storage and access to local resident allotments.

The local area boasts an array of amenities from supermarkets to local bars, restaurants and markets such as the Mercato Metropolitan and outdoor spaces such as Elephant Park itself which hosts a range of events and activities throughout the year.

Rutherford Heights is moments from Elephant & Castle station (0.5 miles) with excellent transport links into the City of London,

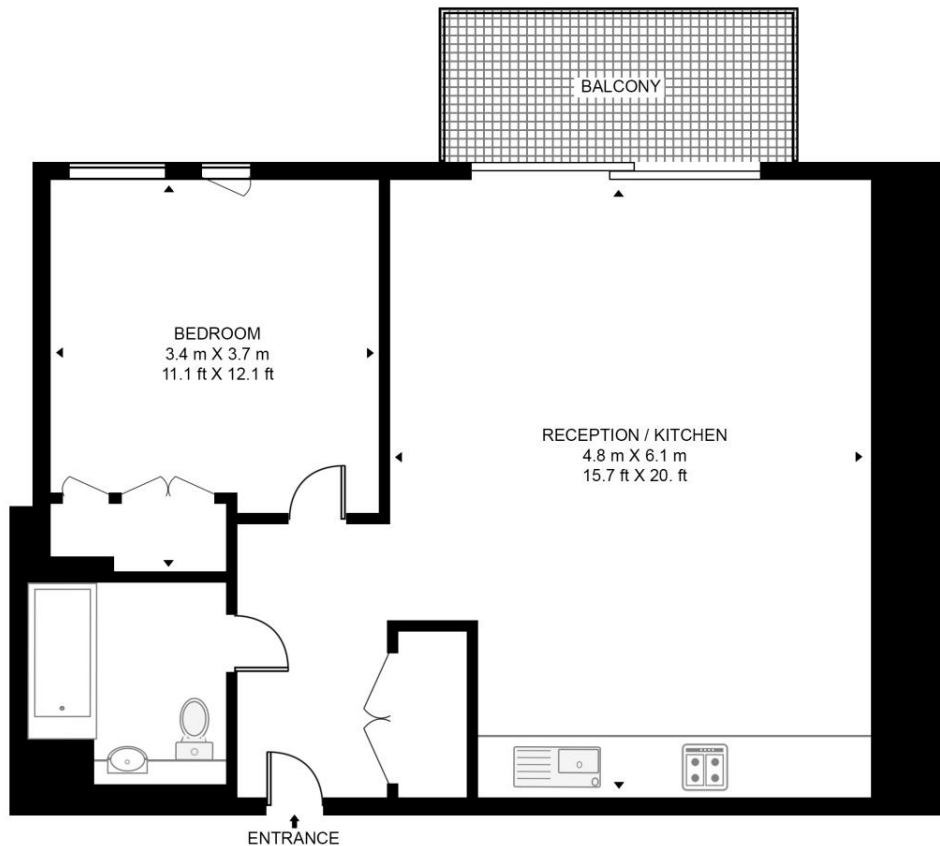
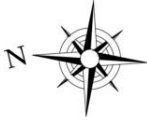
- 1 Bedroom
- 1 Bathroom
- 9th Floor
- Fully fitted kitchen with Bosch appliances
- Communal roof garden
- 24 hour concierge
- 0.5 miles from Elephant & Castle Station
- Approx 564 sq ft (52.4 sq m)
- Furnished
- EPC: B

Floorplan

564 sq ft | 52 sq m

RUTHERFORD HEIGHTS, RODNEY ROAD

APPROXIMATE GROSS INTERNAL FLOOR AREA 564 SQ.FT (52.4 SQ.M)



This floor plan has been defined by the RICS Code of Measurement. This floor plan and all others are for approximate representative purposes only and upon usage is agreed to as such by the client.
WWW: hdvirtualart.com | TEL: 0203.974.1567 | EMAIL: info@hdvirtualart.com

Nine Elms
4 Riverlight Quay,
London SW11 8DG
+4420 3147 1333
lettingsnineelms@eu.jll.com

Urban living, your way.

jll.co.uk/residential

© 2019 Jones Lang LaSalle IP, Inc. All rights reserved. All information contained herein is from sources deemed reliable; however, no representation or warranty is made to the accuracy thereof.

