



**HENRY HUDSON, BANNING STREET
GREENWICH, SE10**





A superb two bedroom, two bathroom in a highly desirable location between Cutty Sark DLR and Greenwich Village with views from the balcony across the River Thames as far as Canary Wharf and the O2.

Occupying a prominent position overlooking the Thames is this stylish and contemporary apartment, which has the benefit of on-site leisure facilities and 24hr concierge.

This immaculate accommodation offers an open plan lounge dining and kitchen area which opens on to the balcony which offers views of the river Thames. There are two double bedrooms, with an ensuite to the master and a contemporary bathroom.

The River Gardens is conveniently located along the Thames path, enabling access to the Centre of Greenwich a breeze with its weekend markets, traditional pubs, modern bars, cinemas and local shops together with amazing transport links from the Cutty Sark DLR and mainline stations.

Early viewings are highly recommended.

- 2 Double bedrooms
- 2 Bathrooms
- Balcony
- River views from the balcony
- Light and spacious throughout
- On-site gym and swimming pool
- 24 Hour concierge services
- Walk to Cutty Sark DLR
- EPC: B

PRICE

OIEO £575,000

GROSS INTERNAL AREA

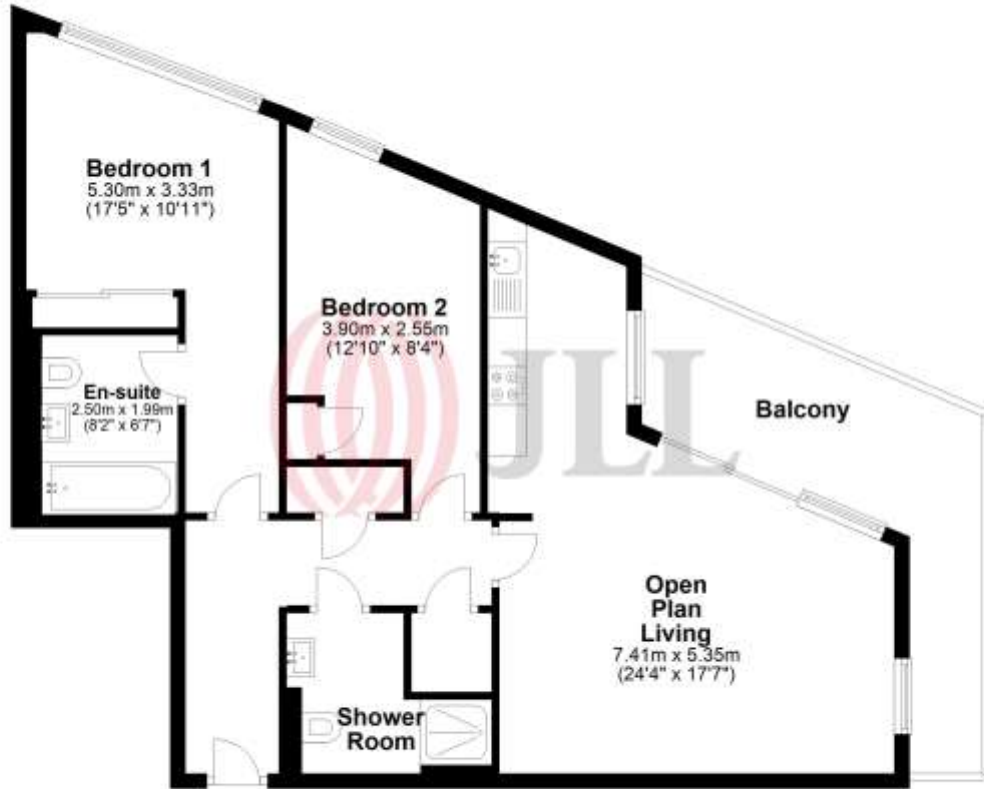
765.9 sq ft (71.2 sq m)

LOCAL AUTHORITY

Royal Borough of Greenwich

Ground Floor

Approx. 71.2 sq. metres (765.9 sq. feet)



Total area: approx. 71.2 sq. metres (765.9 sq. feet)

Floor Plan measurements are approximate and are for illustrative purposes only. While we do not doubt the floor plans accuracy, we make no guarantee, warranty or representation as to the accuracy and completeness of the floor plan.
Plan produced using PlanUp.

22 College Approach
Greenwich
London
SE10 9HY

These particulars are for general information only and do not constitute any part of an offer or contract. All statements contained therein are made without responsibility on the part of the vendors or lessors and are not to be relied upon as statement or representation of fact. Intending purchasers or lessees must satisfy themselves, by inspection, or otherwise, as to the correctness of each of the statements or dimensions contained in these particulars..