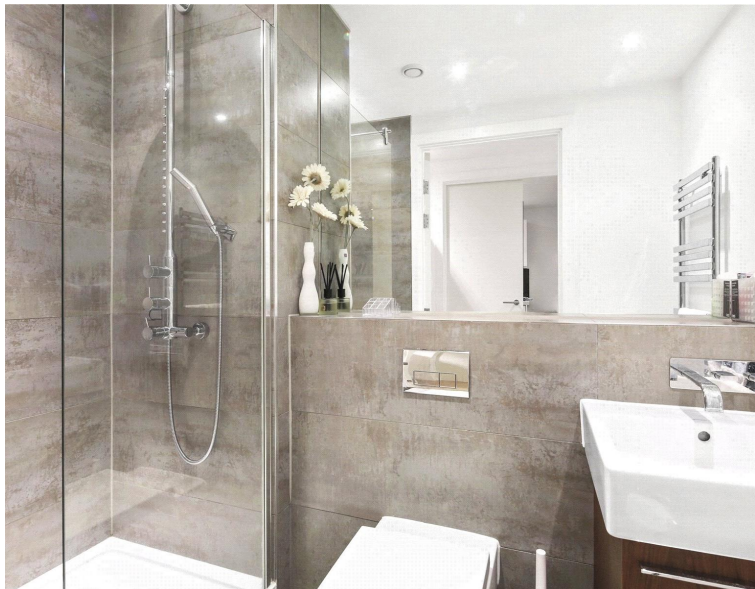
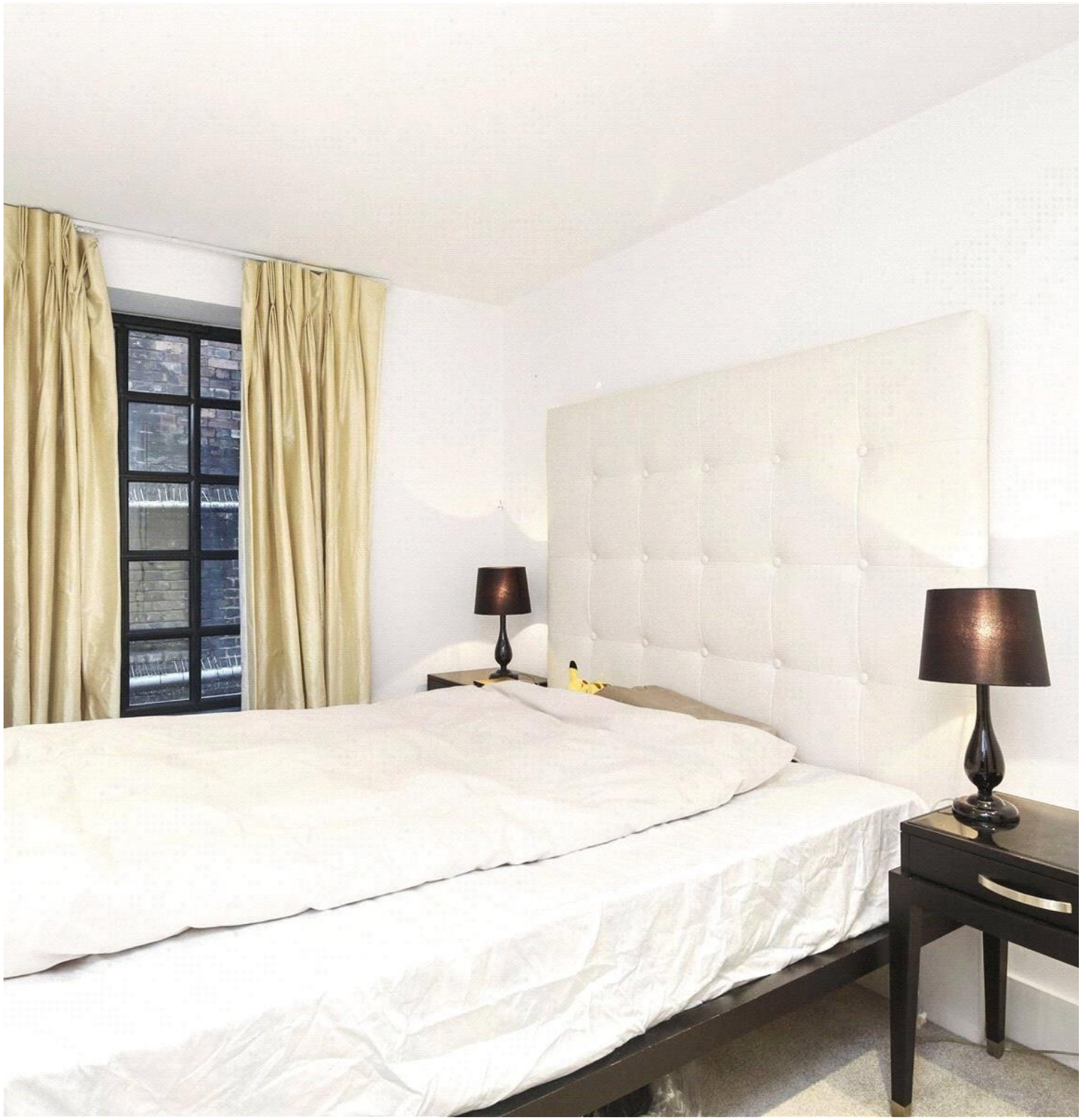
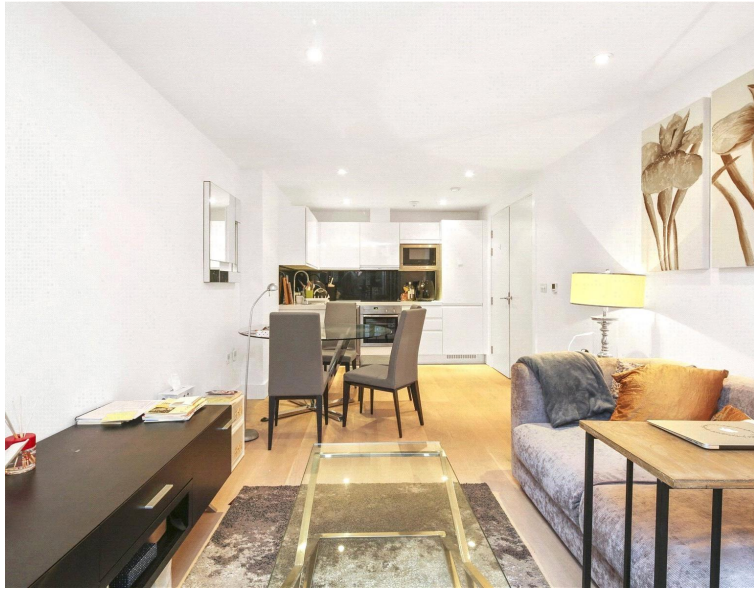
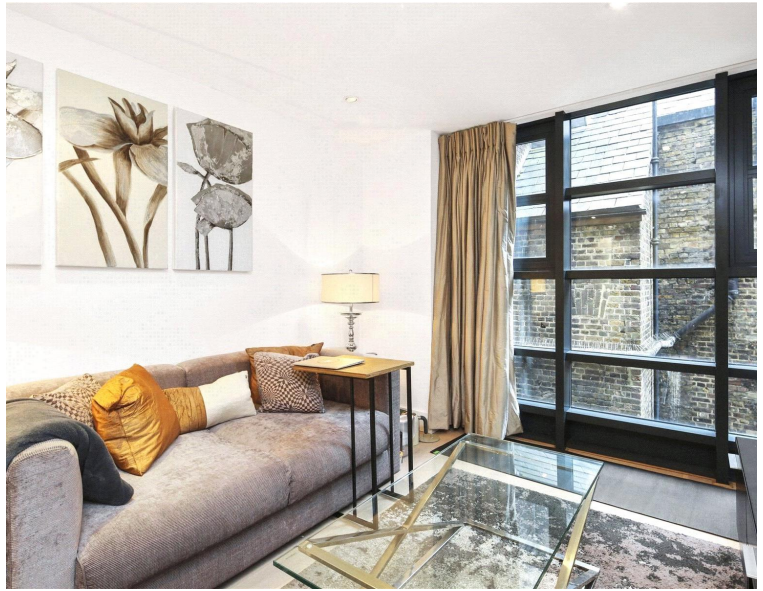


## Bull Inn Court, London WC2R

Price £600 per week - Furnished







## Description

A spacious modern one bedroom apartment in the desirable Piazza Residences, Bull Inn Court.

Interior designed to a contemporary standard, this second floor apartment comprises of an open plan reception room with fully fitted kitchen including wine fridge, double bedroom with fitted wardrobes, contemporary shower room, ample storage.

Located moments from Covent Garden with excellent transport links such as Charing Cross station 0.2 mile away.

As well as paying the rent, you may also be required to make some additional permitted payments. If your tenancy does not qualify as an AST, additional fees may apply. Please visit [jll.co.uk/fees](http://jll.co.uk/fees) for details of fees which may be payable when renting a property.

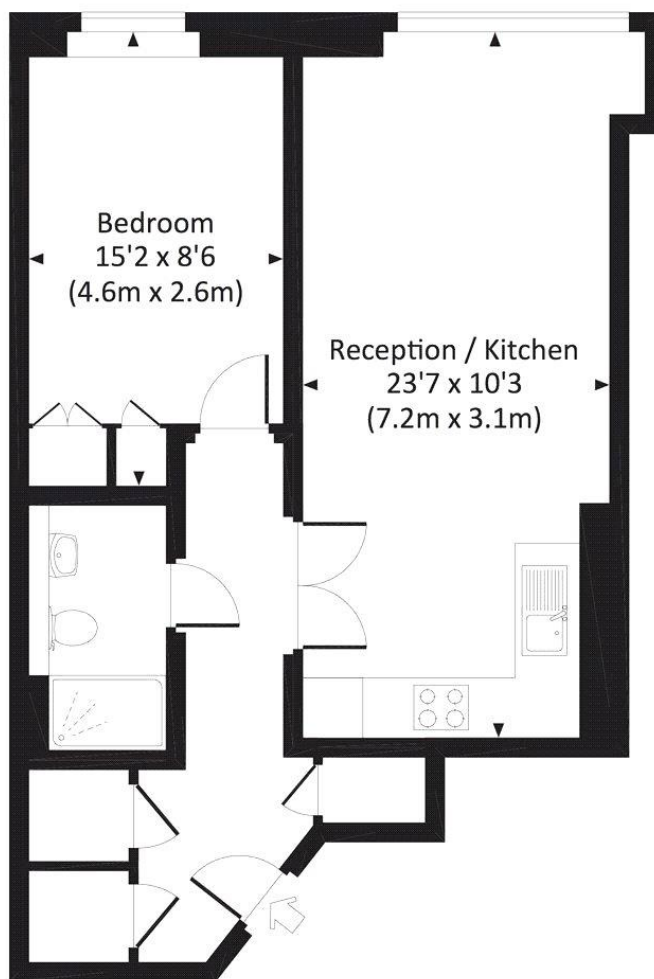
- 1 Bedroom
- 1 Bathroom
- Concierge
- Lift
- 0.2 mile from Charing Cross station
- Approx. 535 sq ft ( 49.7 sq m)
- Leasehold
- EPC: B

# Floorplan

535 sq ft | 50 sq m

## BULL INN COURT, WC2R

Approx. gross internal area  
535 Sq Ft. / 49.7 Sq M.



SECOND FLOOR



All measurements have been made in accordance with RICS Code of Measuring Practice which are approximate only and only for illustrative purposes. For the avoidance of doubt, Dowling Jones Design shall not be liable for any reliance on these measurements. © 2017 www.dowlingjones.com 020 7610 9933

Mayfair and Marylebone  
JLL, 30 Warwick Street,  
London W1B 5NH  
+44 207 399 5550  
tenancymanagement@eu.jll.c

*Urban living, your way.*

[jll.co.uk/residential](http://jll.co.uk/residential)

© 2019 Jones Lang LaSalle IP, Inc. All rights reserved. All information contained herein is from sources deemed reliable; however, no representation or warranty is made to the accuracy thereof.

