



**Curzon Street, London W1J**

Price £1,550 per week - Furnished







## Description

Brand new high specification Mayfair duplex on the 4th & 5th floors of a newly refurbished period building with a lift. Situated on Curzon Street in the heart of Mayfair, moments from Berkeley Square and Shepherd Market. This beautifully presented interior designed property offers high specification finishes throughout and extends to 998 sq.ft with a large private roof terrace. The accommodation comprises entrance hall, utility cupboard, fantastic reception/dining area with open plan kitchen and access to the terrace. The two double bedrooms both have luxury tiled shower rooms and an excellent range of built in wardrobes. Other benefits are underfloor heating, air conditioning, solid wood flooring and entry phone system.

As well as paying the rent, you may also be required to make permitted payments. Please visit [jll.co.uk/fees](http://jll.co.uk/fees) for details of fees which may be payable when renting a property. If your tenancy does not qualify as an AST, additional fees may apply.

- Two double bedrooms
- Two shower rooms (one en suite)
- Large reception room
- Open plan kitchen
- Terrace
- Fourth/fifth floor with lift
- Furnished
- Approx. 998 sq ft (93 sq m)
- EPC: D

# Floorplan

998 sq ft | 93 sq m

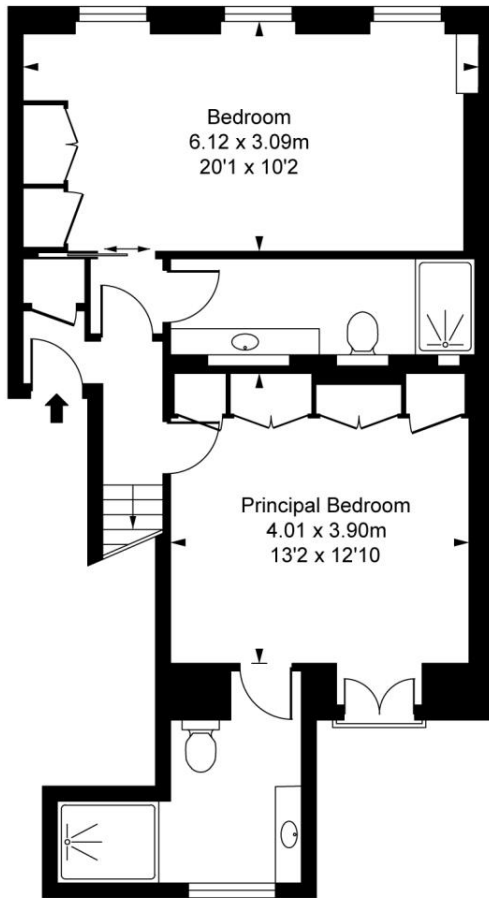


## Curzon Street, W1J

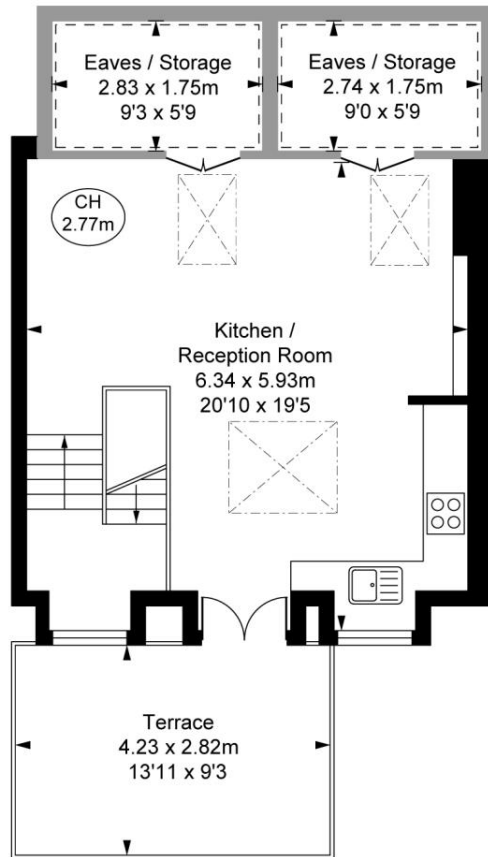
Approximate Gross Internal Area  
 89.77 sq m / 966 sq ft  
 Eaves Storage  
 9.74 sq m / 105 sq ft  
**Total Areas Including Eaves**  
**99.51 sq m / 1,071 sq ft**

( Including restricted height under 1.5m  )

( CH = Ceiling Heights )



**Fourth Floor**  
 Approximate Gross Internal Area  
 53.49 sq m / 576 sq ft



**Fifth Floor**  
 Approximate Gross Internal Area  
 36.28 sq m / 391 sq ft

This plan is not to scale. It is for guidance and not for valuation purposes.  
 All measurements and areas are approximate only, and have been prepared in accordance with the current edition of the RICS Code of Measuring Practice.  
 © Fulham Performance