



## Strand, London WC2R

Price £895 per week - Furnished







## Description

A luxurious fourth floor apartment (730 sq ft) in this newly converted period development in The Strand.

The property consists of master bedroom with en suite bathroom, second double bedroom, one shower room, reception room and a fully fitted, open plan kitchen.

Facilities include video entry phone security, comfort cooling, underfloor heating, integrated touch panel lighting and a 24 hour concierge.

This Grade II listed building on the famous Strand, is in the heart of London's West End.

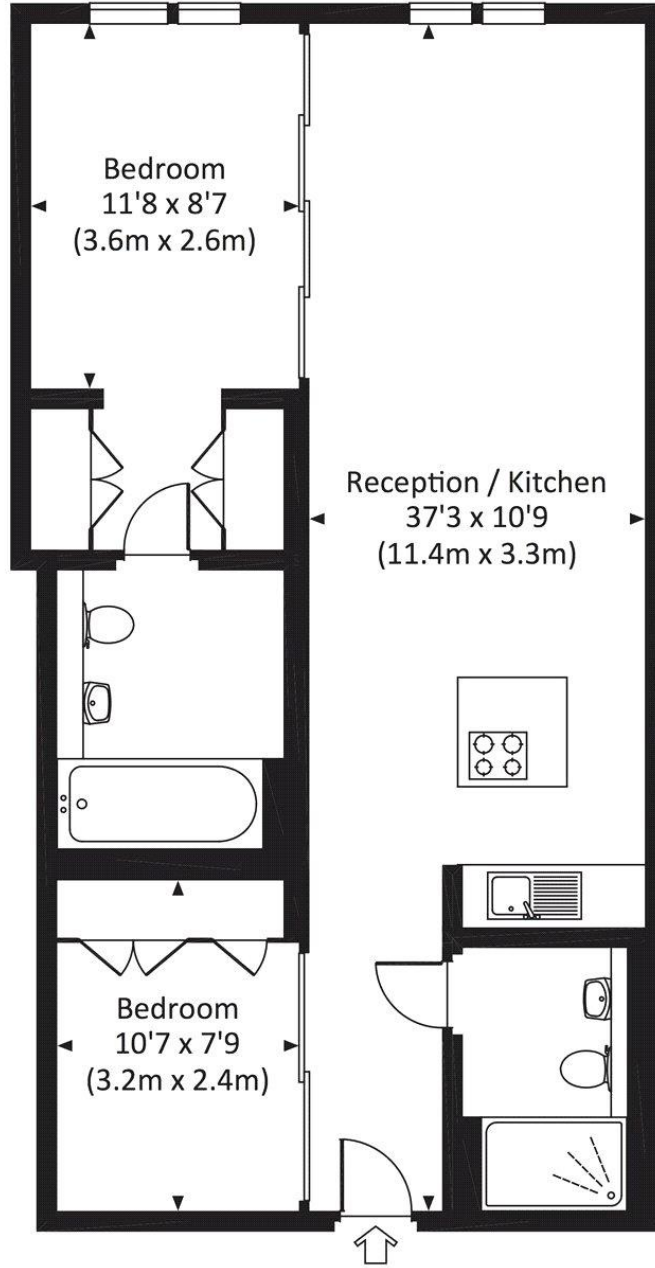
As well as paying the rent, you may also be required to make some additional permitted payments. If your tenancy does not qualify as an AST, additional fees may apply. Please visit [jll.co.uk/fees](http://jll.co.uk/fees) for details of fees which may be payable when renting a property.

- 2 Bedrooms
- 2 Bathrooms
- 4th Floor
- Open-plan kitchen
- Underfloor heating
- 24 hour concierge
- Approx. 730 sq ft (67 sq m)
- 0.3 miles from Temple Station
- Furnished
- EPC: B

# Floorplan

730 sq ft | 68 sq m

Approx. gross internal area  
730 Sq Ft. / 67.8 Sq M.



FOURTH FLOOR



All measurements have been made in accordance with RICS Code of Measuring Practice which are approximate only and only for illustrative purposes. For the avoidance of doubt, Dowling Jones Design shall not be liable for any reliance on these measurements. © 2016 www.dowlingjones.com 020 7610 9933

City  
25 Walbrook The Walbrook  
Building,  
London EC4N 8AF  
+4420 7337 4000

*Urban living, your way.*

[jll.co.uk/residential](http://jll.co.uk/residential)

© 2019 Jones Lang LaSalle IP, Inc. All rights reserved. All information contained herein is from sources deemed reliable; however, no representation or warranty is made to the accuracy thereof.

