



Arundel Street, London WC2R

Price £1,720 per week - Furnished







Description

A rare opportunity to rent a 3 bedroom duplex apartment in 190 Strand.

This beautifully presented two story duplex apartment boasts approximately 1487 sq. ft of living space and is offered fully furnished. The lower level comprises a large open plan living / dining area with fully fitted kitchen, private balcony, cloakroom and an abundance of storage space. The upper level is comprised of 3 double bedrooms, with the master boasting a large fitted wardrobe area, two luxury bathrooms with marble finish and additional storage space. Benefits include on site gym, pool, cinema, business facilities & 24 hour concierge. The development is situated on the Strand, Westminster WC2, 0.2 miles from Temple station and 0.5 miles from Covent Garden.

We understand that cooling / heating is delivered via a communal system for which separate charges apply.

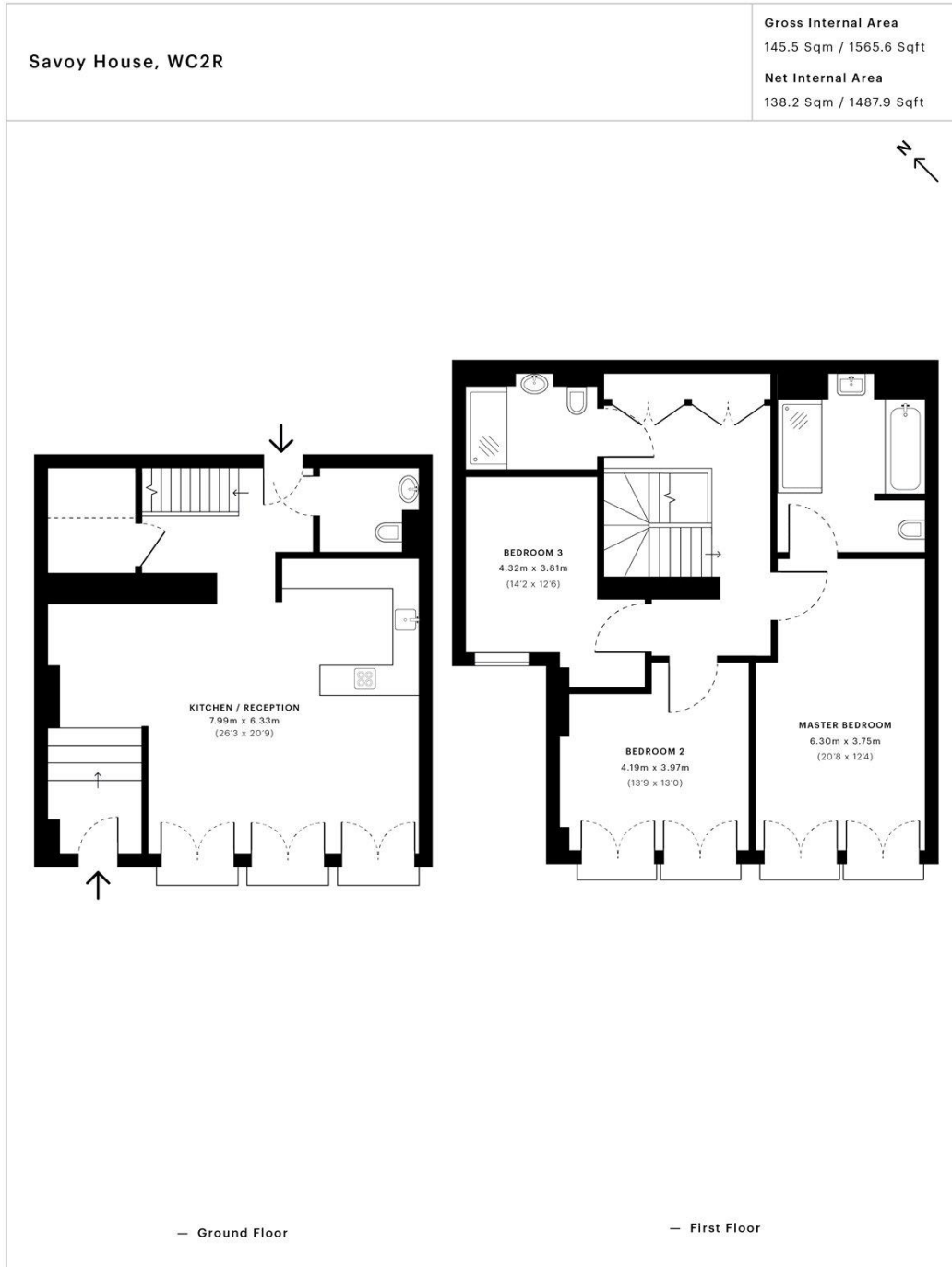
As well as paying the rent, you may also be required to make the following permitted payments. If your tenancy does not qualify as an AST, additional fees may apply.

Please visit jll.co.uk/fees for details of fees which may be payable when renting a property.

- 3 Bedrooms
- 2 Bathrooms
- Parking available
- 24 hour concierge
- On site gym, pool, cinema and business facilities
- 0.2 miles from Temple Station
- Approx. 1487 sq ft (138 sq m)
- Furnished
- EPC: B

Floorplan

1,487 sq ft | 138 sq m



This floor plan was captured for JLL, City Office on 20/03/2018. Architectural features to scale, derived from millions of laser scan points, accurate to +/- 3cm and produced in accordance with the Royal Institute of Chartered Surveyors Property Measurement standards. Gross Internal Area is measured from the internal faces of external walls and includes internal walls/obstructions. Net Internal Area excludes internal walls/obstructions. Please perform your own checks before relying on these figures in any transaction.



City
25 Walbrook The Walbrook
Building,
London EC4N 8AF
+4420 7337 4000

Urban living, your way.

jll.co.uk/residential

© 2019 Jones Lang LaSalle IP, Inc. All rights reserved. All information contained herein is from sources deemed reliable; however, no representation or warranty is made to the accuracy thereof.

