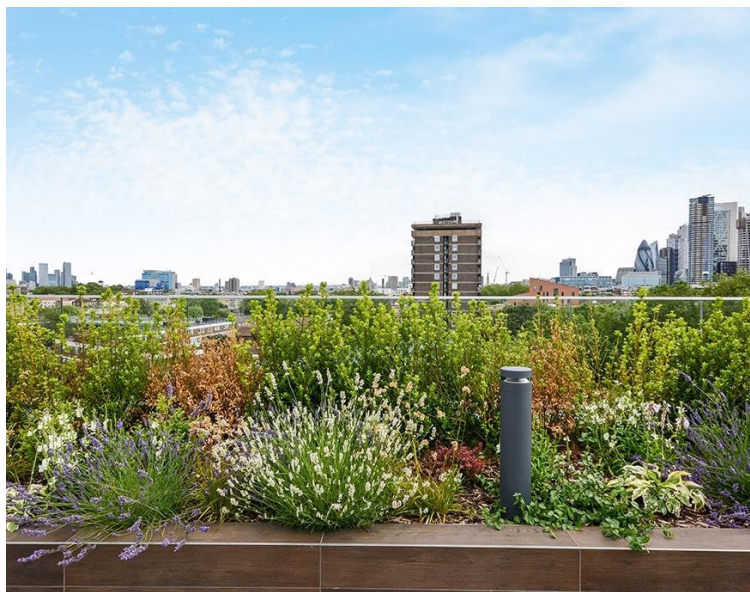
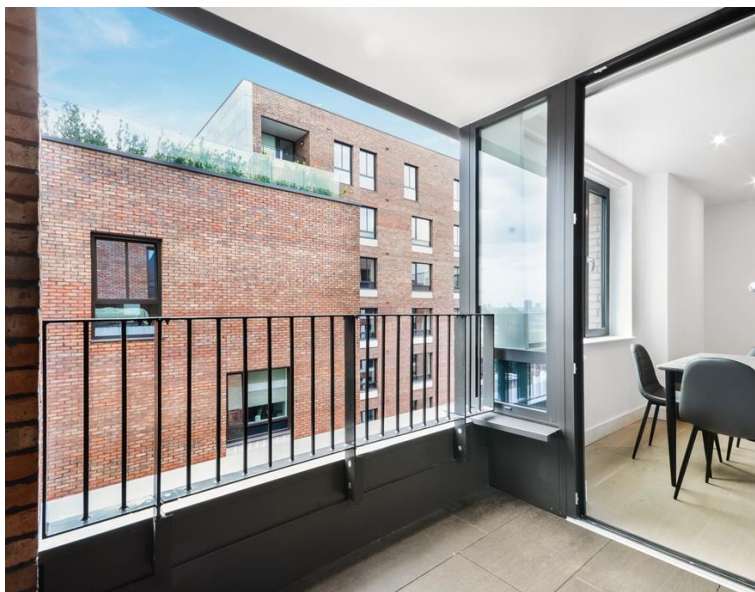


## Gorsuch Place, London E2

Price £650 per week - Furnished







## Description

A fully furnished 1 bedroom apartment situated in Rosewood Building, Shoreditch Exchange, E2. The development boasts 24 hour concierge, on site gym, cinema and resident's lounge.

Situated on the 5th floor and offered on a fully furnished basis, this stunning apartment comprises a double bedroom with fitted wardrobes, spacious open plan living area with private balcony, views towards the City of London, fully fitted kitchen with integrated Siemens appliances, contemporary bathroom, wood flooring and excellent storage space.

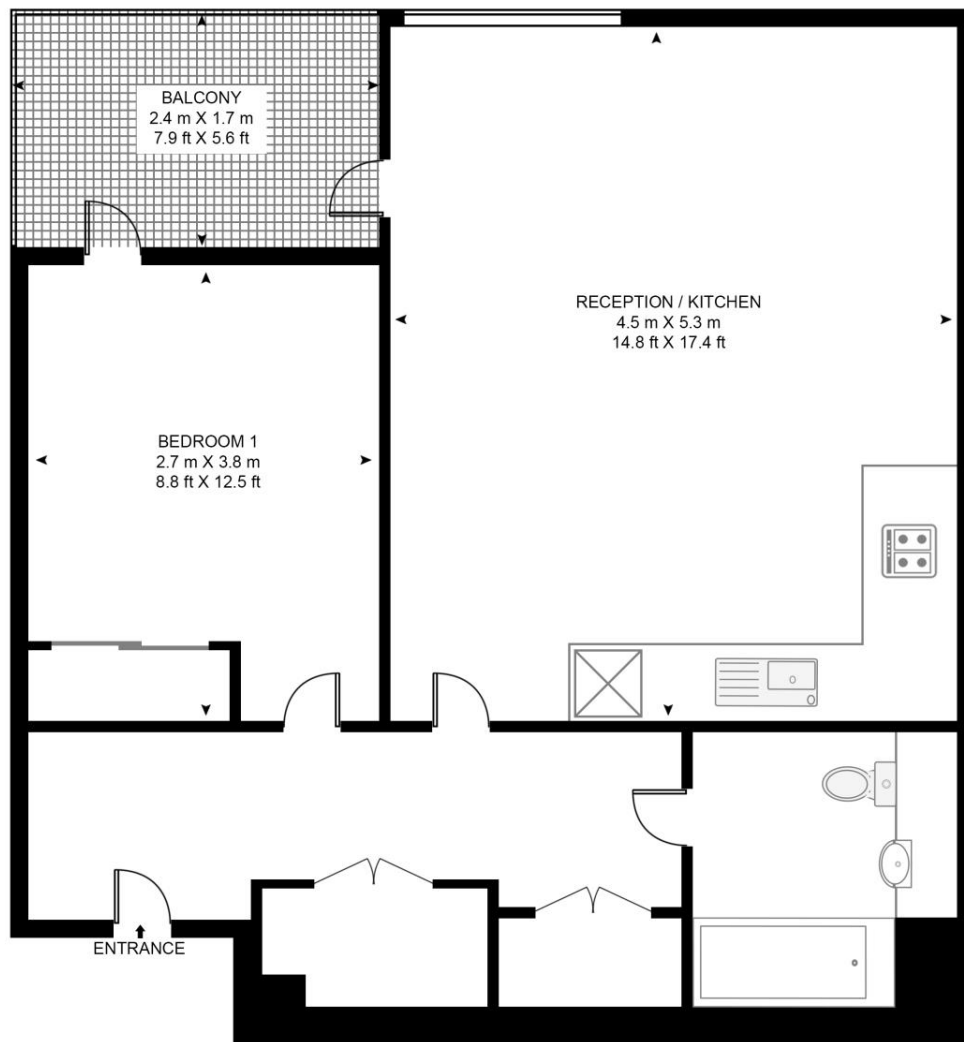
Shoreditch Exchange has fantastic amenities which include 24 hour concierge, on site gymnasium and private cinema, along with a rooftop terrace. The development is moments from Hoxton station (0.1 mile), well situated for the City of London and in the heart of Shoreditch.

- 1 Bedroom
- 1 Bathroom
- 5th Floor
- Balcony
- Views towards the City of London
- On-site gymnasium
- 24 hour concierge
- 0.1 miles from Hoxton Station
- Approx. 615 sq ft (57.1 sq m)
- EPC: B

# Floorplan

615 sq ft | 57 sq m

**ROSEWOOD BUILDING. SHOREDITCH EXCHANGE**  
APPROXIMATE GROSS INTERNAL FLOOR AREA 540 SQ.FT (50.2 SQ.M)



FIFTH FLOOR

**HDVA**

This floor plan has been defined by the RICS Code of Measurement. This floor plan and all others are for approximate representative purposes only and upon usage is agreed to as such by the client.

WWW: [hdvirtualart.com](http://hdvirtualart.com) | TEL: 0203.974.1567 | EMAIL: [info@hdvirtualart.com](mailto:info@hdvirtualart.com)

City  
25 Walbrook The Walbrook  
Building,  
London EC4N 8AF  
+4420 7337 4000

*Urban living, your way.*

[jll.co.uk/residential](http://jll.co.uk/residential)

© 2019 Jones Lang LaSalle IP, Inc. All rights reserved. All information contained herein is from sources deemed reliable; however, no representation or warranty is made to the accuracy thereof.

