



Flat 3 | 26 Redcliffe Gardens | Chelsea SW10

A newly developed and bright two-bedroom flat on the first floor of a period building, benefitting from a high floor to ceiling height of 2.89m to the reception room.



The flat consists of two double bedrooms, en-suite bathroom, shower room, kitchen and an impressive reception room / dining room.

26 Redcliffe Gardens is an imposing period building located on the corner of Redcliffe Gardens and Fawcett Street, in the heart of Chelsea. The entire building is being redeveloped as 5 new apartments, with construction completion due for Q3 2023. Redcliffe Gardens is ideally located for all of the shops and amenities of the Fulham Road.







#### ACCOMMODATION

- Reception / Dining room
- Kitchen
- 2 Double Bedrooms
- En-suite bathroom
- Shower room

#### TERMS

Asking Price: £1,575,000

Tenure: 999 Years with  
Share of Freehold

Service Charge:  
£2,453 per annum

Ground Rent: Peppercorn

Local Authority: Royal  
Borough of Kensington  
and Chelsea

Council Tax: Band TBC

EPC: Rating C

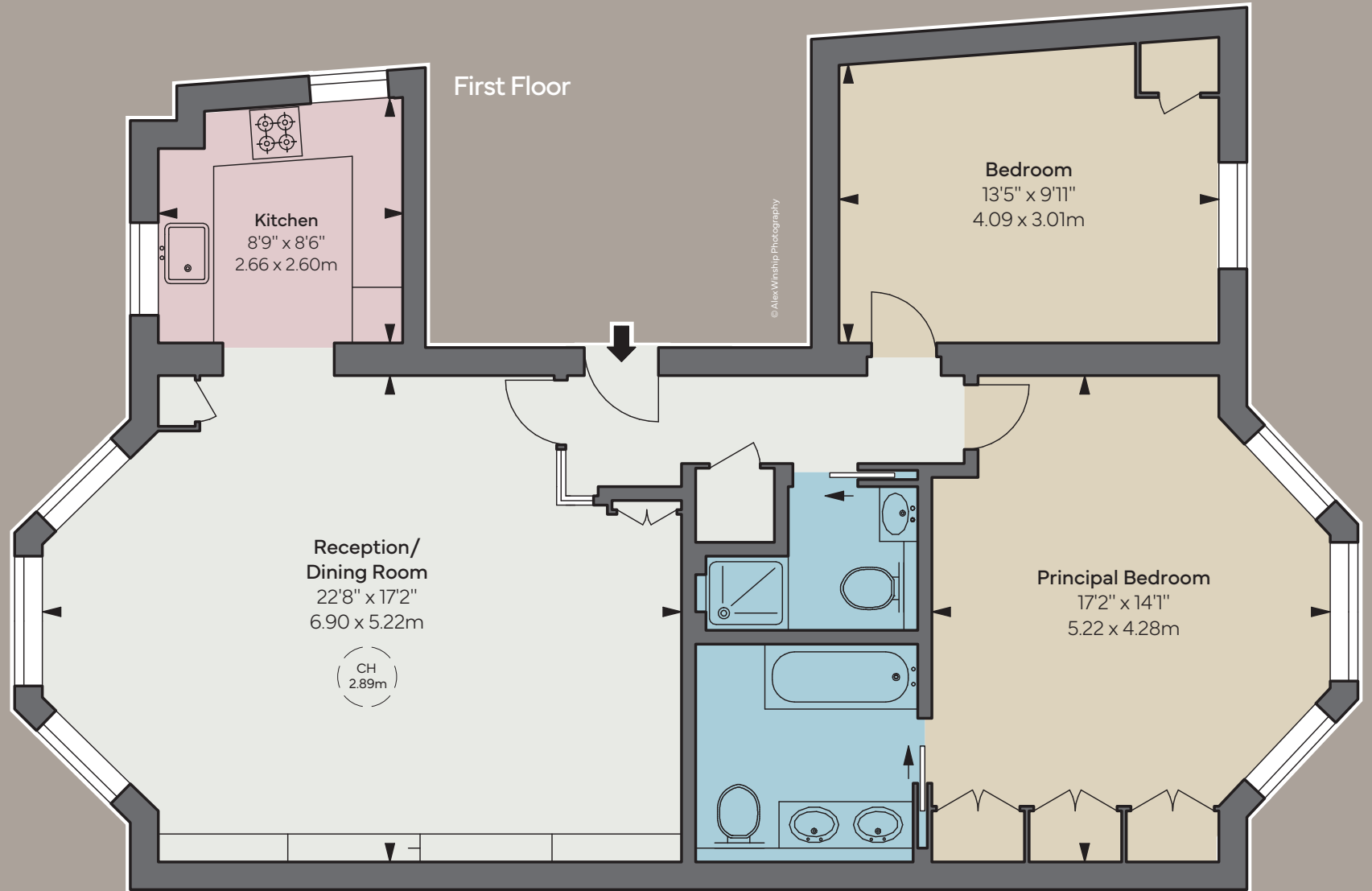




APPROXIMATE GROSS  
INTERNAL AREA

955 sq ft

88.69 sq m



Floorplan for guidance only, not to scale or valuations purposes. It must not be relied upon as a statement of fact. All measurements and areas are approximate and have been prepared in accordance with the current edition of the RICS Code of Measuring Practice.

THE  
BROCHURE  
ALEX  
WINSHIP

These particulars are for general information only and do not constitute any part of an offer or contract. All statements contained therein are made without responsibility on the part of the vendors or lessors and are not to be relied upon as statement or representation of fact. Intending purchasers or lessees must satisfy themselves, by inspection, or otherwise, as to the correctness of each of the statements or dimensions contained in these particulars. This floorplan is for guidance only and not for valuation purposes. 22/08/23 JLL-230823-01GG

**JLL Knightsbridge**

174 Brompton Road, London SW3 1HP

020 7306 1610

**JLL Chelsea**

2 Cale Street, London SW3 3QU

020 7399 5010

[jll.co.uk/primecollection](http://jll.co.uk/primecollection)

