



## River Gardens Walk, London SE10

Guide price £600,000 Leasehold







## Description

Located within the ever popular and prestigious River Gardens development comes this stunning two bedroom, one bathroom 763.9 Sq Ft, River view apartment within walking distance of Cutty Sark DLR and Maze Hill mainline station offering direct links to City, Canary Walk and Central London.

The accommodation comprises large entrance hall, open plan kitchen / reception room with storage cupboard and built in appliances that opens onto a large balcony overlooking the river Thames. Two good sized bedrooms, and a family bathroom with bath and separate shower cubicle.

The property is light and spacious throughout and benefits from a storage cage, 24 hour concierge, residents gym, tennis court and swimming pool.

The property is well located for Greenwich Park, Blackheath Village and Greenwich with its array of pubs, restaurants, heritage sites and Greenwich market all on your doorstep.

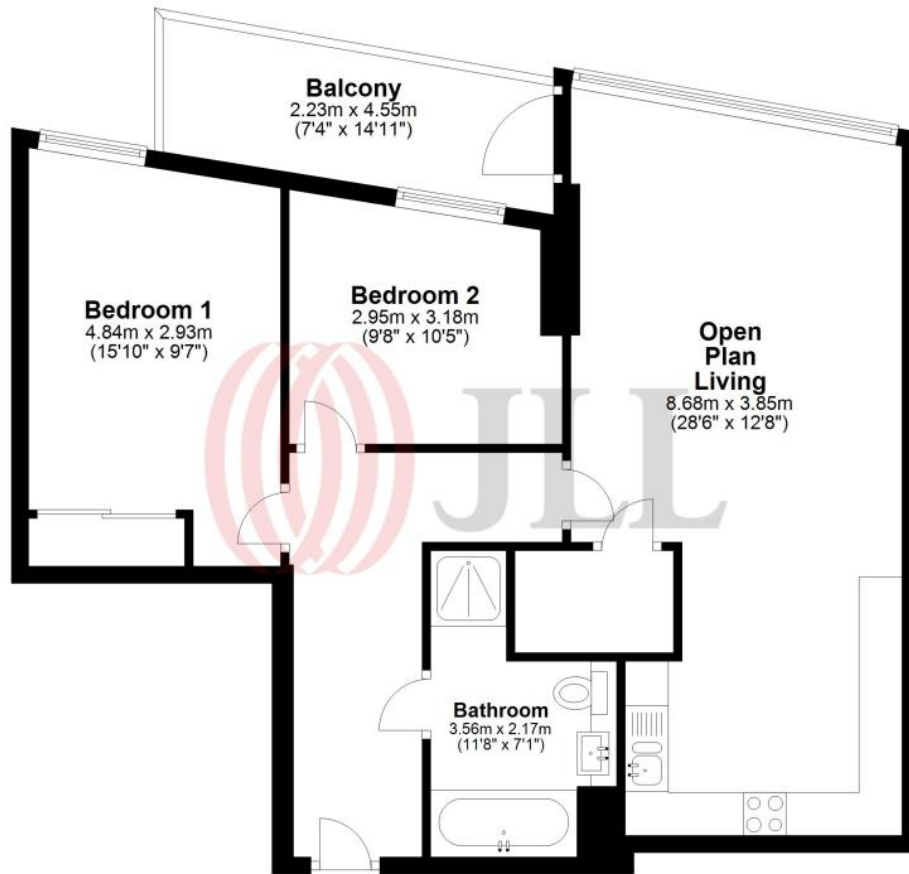
- 2 Double bedrooms
- 1 Bathroom
- 2nd Floor modern apartment
- Balcony
- Stunning river views
- Storage cage
- Beautifully presented throughout
- Approx. 763.9 sq ft (71.0 sq m)
- 24 Hour concierge
- On-site leisure facilities

# Floorplan

764 sq ft | 71 sq m

## Second Floor

Approx. 71.0 sq. metres (763.9 sq. feet)



Total area: approx. 71.0 sq. metres (763.9 sq. feet)

Floor Plan measurements are approximate and are for illustrative purposes only. While we do not doubt the floor plans accuracy, we make no guarantee, warranty or representation as to the accuracy and completeness of the floor plan.  
Plan produced using PlanUp.

Greenwich  
22 College Approach,  
London SE10 9HY  
02088589986  
lettingsgreenwich@eu.jll.com

*Urban living, your way.*

[jll.co.uk/residential](http://jll.co.uk/residential)

© 2019 Jones Lang LaSalle IP, Inc. All rights reserved. All information contained herein is from sources deemed reliable; however, no representation or warranty is made to the accuracy thereof.

