



Conington Road, London SE13

Guide price £225,000 Leasehold





Description

A stunning modern studio apartment conveniently located just 100 meters from Elverson Road DLR offering travel into Canary Wharf and The City, local shops and Lewisham town centre.

The property is located on the fifth floor and briefly comprises a spacious modern kitchen with integrated appliances, a reception room/bedroom and modern luxury bathroom with double shower enclosure.

Further benefits include 24 hour concierge and on site gym facilities.

Offered to the market with no onward chain, early viewings are highly recommended.

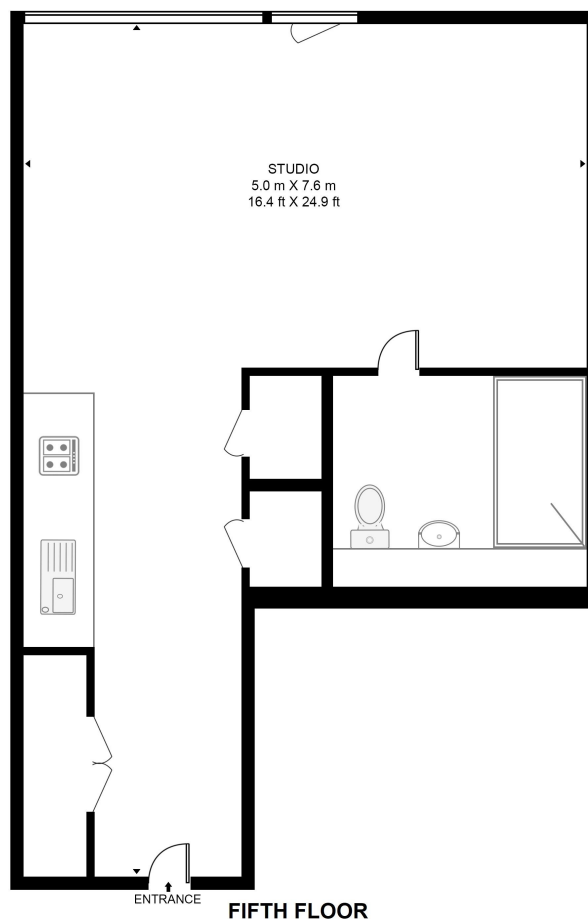
- Studio apartment
- Modern kitchen & bathroom
- 5th Floor
- 24 Hour concierge
- On site gym facilities
- Elverson Road & Lewisham DLR
- Approx 331 sq ft (30.8 sq m)
- No onward chain
- EPC: B



Floorplan

331 sq ft | 31 sq m

HESTER HOUSE, 72-78 CONNINGTON ROAD
APPROXIMATE GROSS INTERNAL FLOOR AREA 331 SQ.FT (30.8 SQ.M)



HDVA

This floor plan has been defined by the RICS Code of Measurement. This floor plan and all others are for approximate representative purposes only and upon usage is agreed to as such by the client.
WWW: hdvirtualart.com | TEL: 0203.974.1567 | EMAIL: info@hdvirtualart.com

Greenwich
22 College Approach,
London SE10 9HY
02088589986
lettingsgreenwich@eu.jll.com

Urban living, your way.

jll.co.uk/residential

© 2019 Jones Lang LaSalle IP, Inc. All rights reserved. All information contained herein is from sources deemed reliable; however, no representation or warranty is made to the accuracy thereof.

