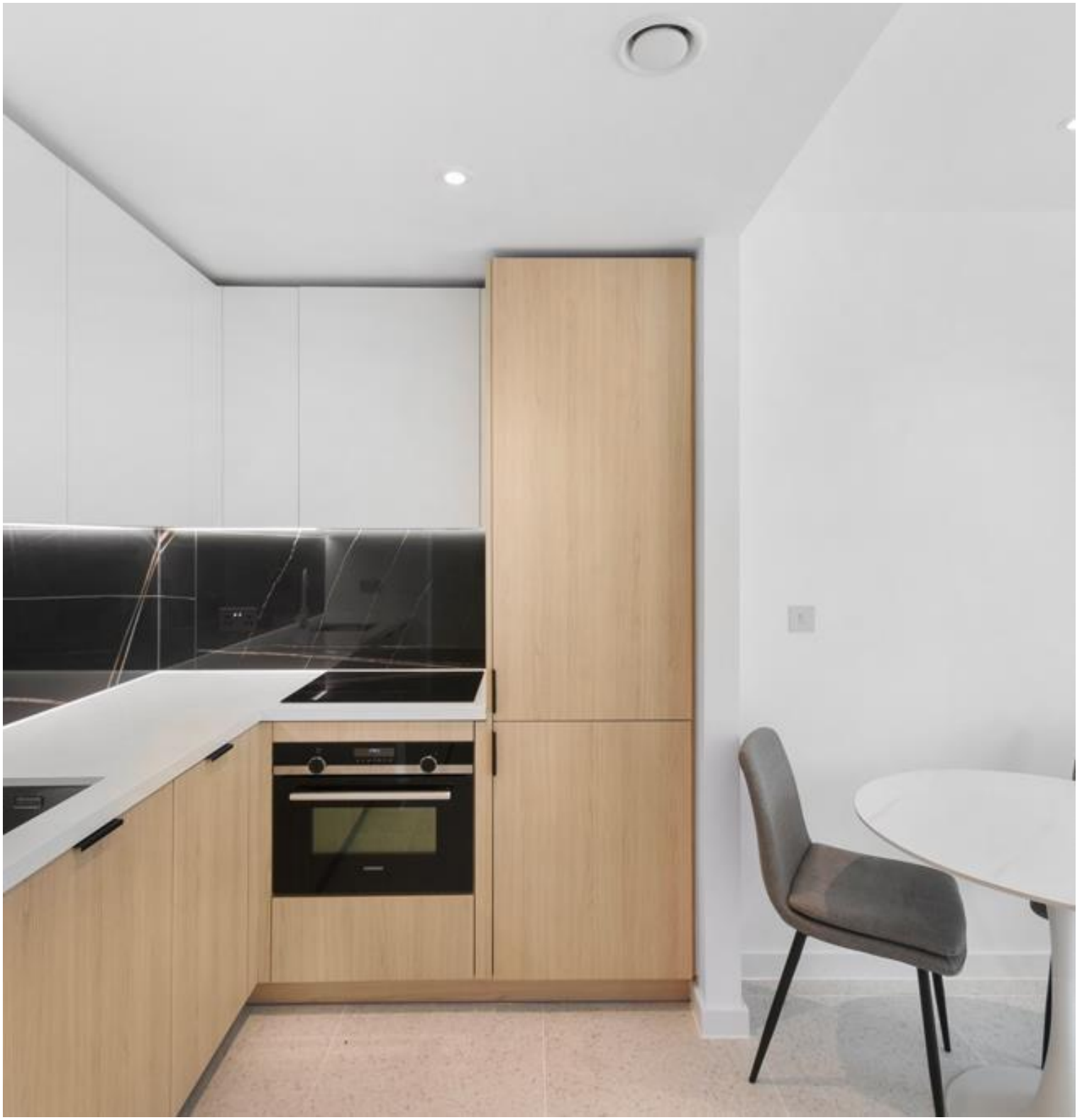
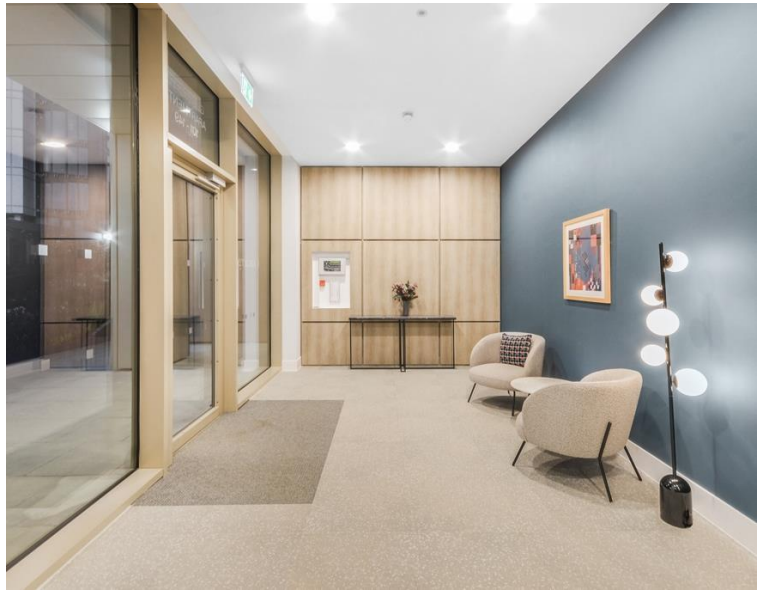
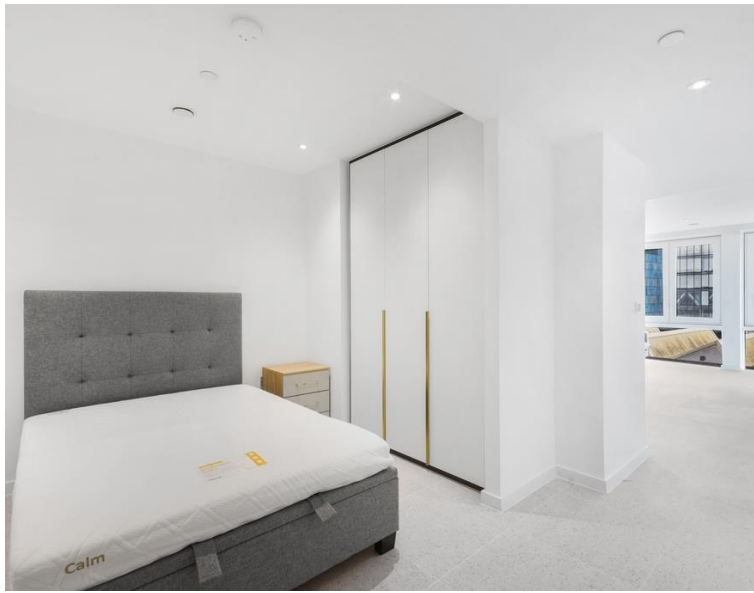


Cendal Crescent, London E1

Price £495 per week - Furnished







Description

JLL are delighted to present a brand new studio apartment in the final phase of Silk District, E1, conveniently located for access to the City of London.

Offering great living space and boasting 423sq ft. Offered fully furnished, the apartment will comprise an open plan living room and integrated kitchen, partitioned sleeping area with large fitted wardrobes, bathrooms with porcelain finish, tiled flooring throughout good storage space.

The Silk District is a brand new development from Mount Anvil and offers residents fantastic amenities which include 24 hour concierge, on site gym, cinema room, rooftop gardens and resident's lounge. The development is within easy reach of the City of London and in the heart of the Whitechapel regeneration area, approximately 0.3 miles from Whitechapel Underground / Crossrail station.

As well as paying the rent, you may also be required to make some additional permitted payments. If your tenancy does not qualify as an AST, additional fees may apply. Please visit jll.co.uk/fees for details of fees which may be payable when renting a property.

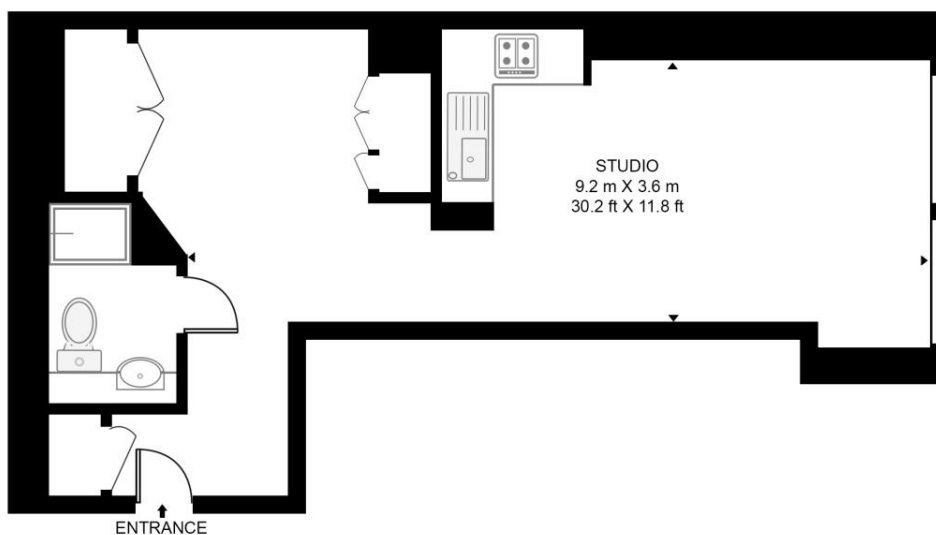
- Studio apartment
- Bathroom with porcelain finish
- Large fitted wardrobes
- Private balcony
- 24-hour concierge
- On-site amenities including gym, cinema, rooftop garden & residents lounge
- 0.3 miles from Whitechapel Underground & Crossrail Station
- Approx 423 sq ft.
- Fully furnished
- EPC: B

Floorplan

423 sq ft | 39 sq m

THE BOUCHON, SILK DISTRICT

APPROXIMATE GROSS INTERNAL FLOOR AREA 424 SQ.FT (39.4 SQ.M)



THIRD FLOOR



This floor plan has been defined by the RICS Code of Measurement. This floor plan and all others are for approximate representative purposes only and upon usage is agreed to as such by the client.

WWW: hdvirtualart.com | TEL: 0203.974.1567 | EMAIL: info@hdvirtualart.com

City
25 Walbrook The Walbrook
Building,
London EC4N 8AF
+4420 7337 4000

Urban living, your way.

jll.co.uk/residential

© 2019 Jones Lang LaSalle IP, Inc. All rights reserved. All information contained herein is from sources deemed reliable; however, no representation or warranty is made to the accuracy thereof.

