



## Guildhouse Street, London SW1V

Price £550 per week - Furnished





# Description

A spacious and well presented third floor flat (with lift) in this modern development just moments from Victoria Station. The flat consists of one double bedroom, one bathroom, reception room and a fully fitted kitchen. Further benefits include wooden flooring in the reception room, a balcony, 24 hour concierge and a well-equipped gym.

As well as paying the rent, you may also be required to make some additional permitted payments. If your tenancy does not qualify as an AST, additional fees may apply. Please visit [jll.co.uk/fees](http://jll.co.uk/fees) for details of fees which may be payable when renting a property.

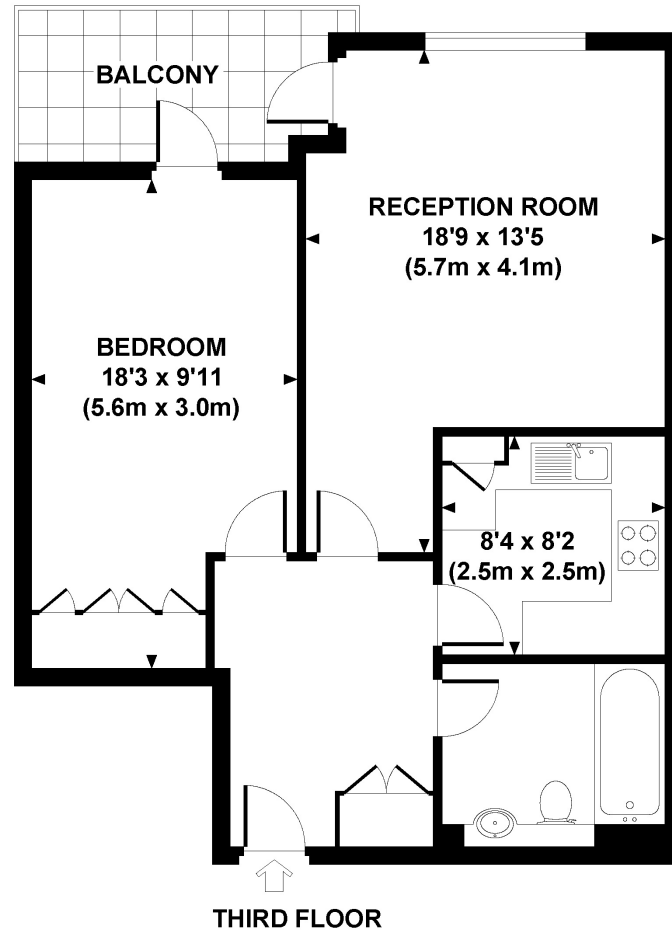
- 1 Double bedroom
- 1 Bathroom
- Reception room
- Fully fitted kitchen
- Third floor
- Lift
- Balcony
- 24 Hour concierge
- Use of leisure facilities
- Approx. 599 sq ft (56 sq m)



# Floorplan

599 sq ft | 56 sq m

Approx. gross internal area  
599 Sq Ft. / 56 Sq M.



THIRD FLOOR

All measurements are approximate and for illustrative purposes only as defined by the RICS Code of Measuring Practice © 2012  
Dowling Jones Design www.dowlingjones.com 020 7610 9833

Knightsbridge  
174 Brompton Road,  
London SW3 1HP  
+4420 7306 1600  
lettingsknightsbridge@eu.jll.co

*Urban living, your way.*

[jll.co.uk/residential](http://jll.co.uk/residential)

© 2019 Jones Lang LaSalle IP, Inc. All rights reserved. All information contained herein is from sources deemed reliable; however, no representation or warranty is made to the accuracy thereof.

