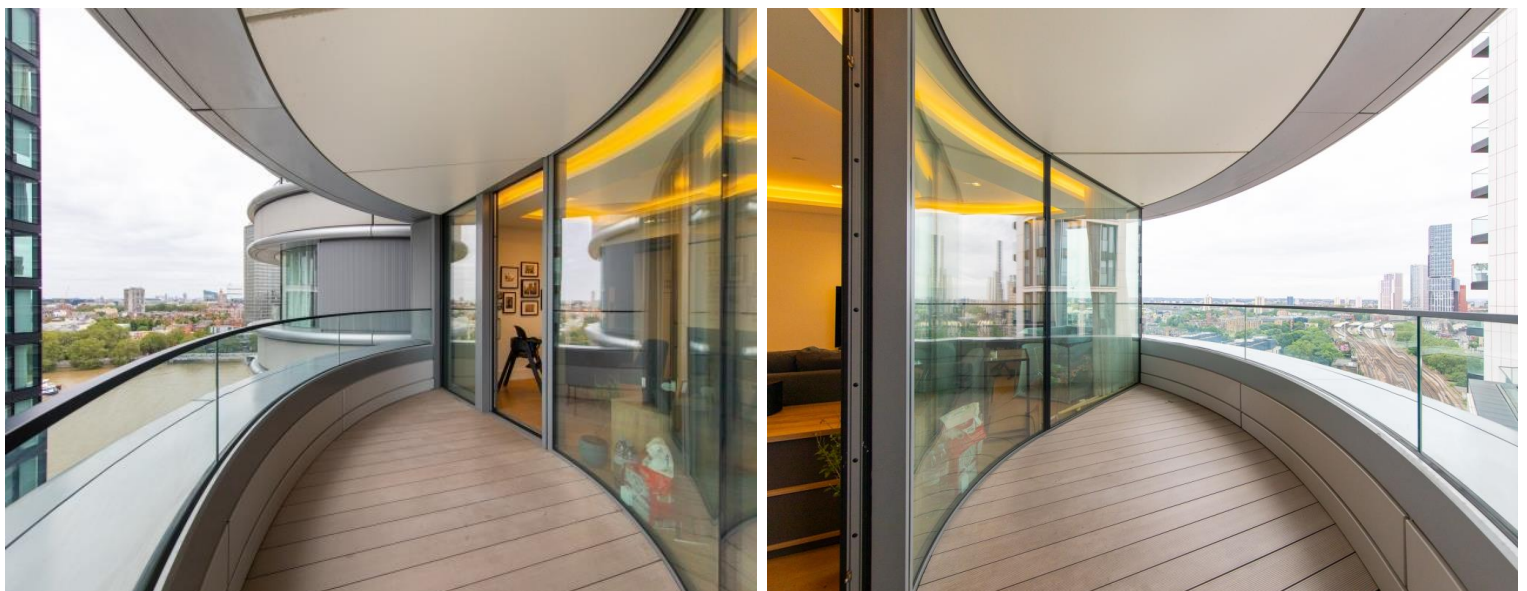
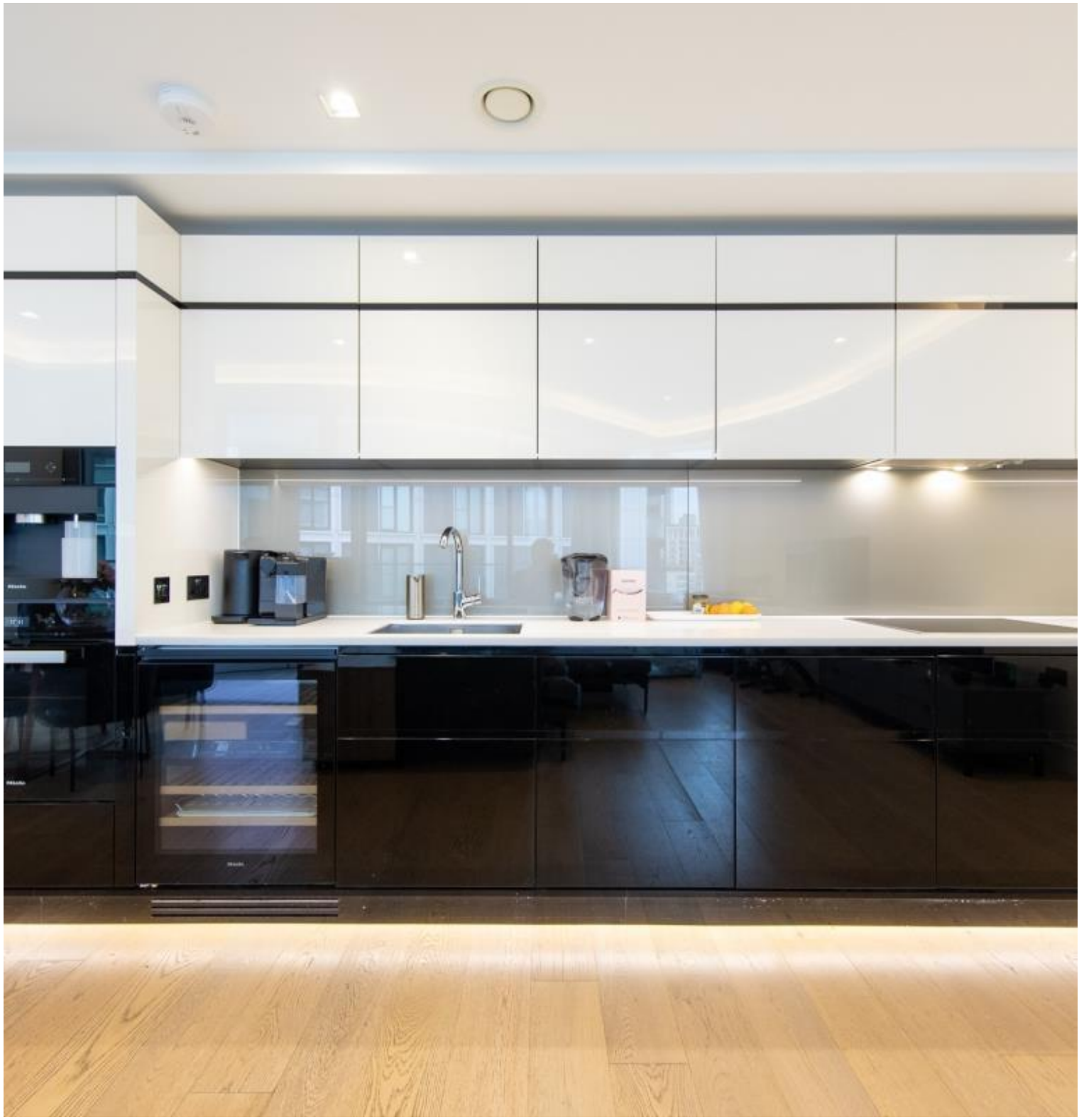


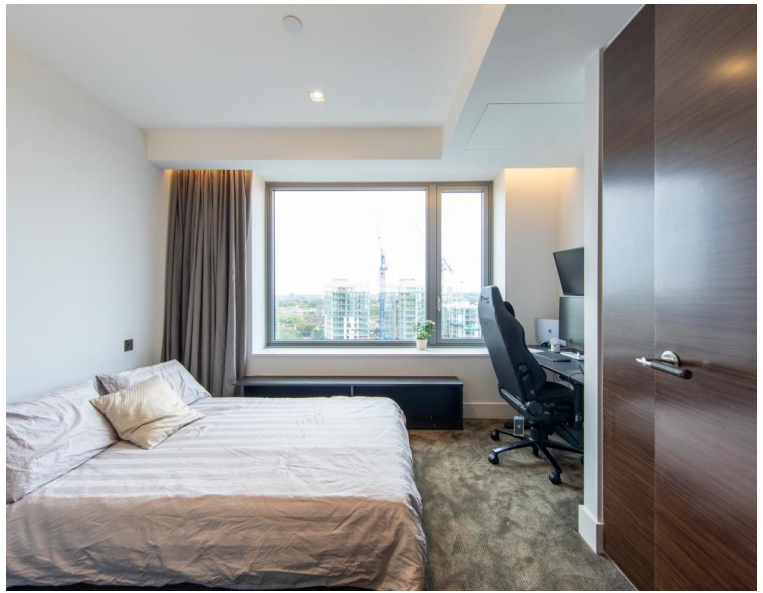


Albert Embankment, London SE1

Asking price £1,150,000 Leasehold







Description

A bright 2 bedroom apartment with balcony in the Corniche, a luxury development on Albert Embankment with views of the Thames.

The apartment comprises of an open plan reception with fully fitted kitchen, private balcony, master bedroom with fitted wardrobes and en suite bathroom, second double bedroom with fitted wardrobes, contemporary shower room, excellent storage.

Resident benefits include comfort cooling, 24 hour concierge, a beautiful sky lounge and terrace with bar, gym, swimming pool and spa facilities, ten-pin bowling, games room, private cinema, observatory, terrace and private dining space.

Located on Albert Embankment near Vauxhall this location is very convenient for central London and the city. There are a wide range of convenient transport links close to The Corniche including Vauxhall Underground Station and Westminster Underground Station.

Leasehold, EPC:

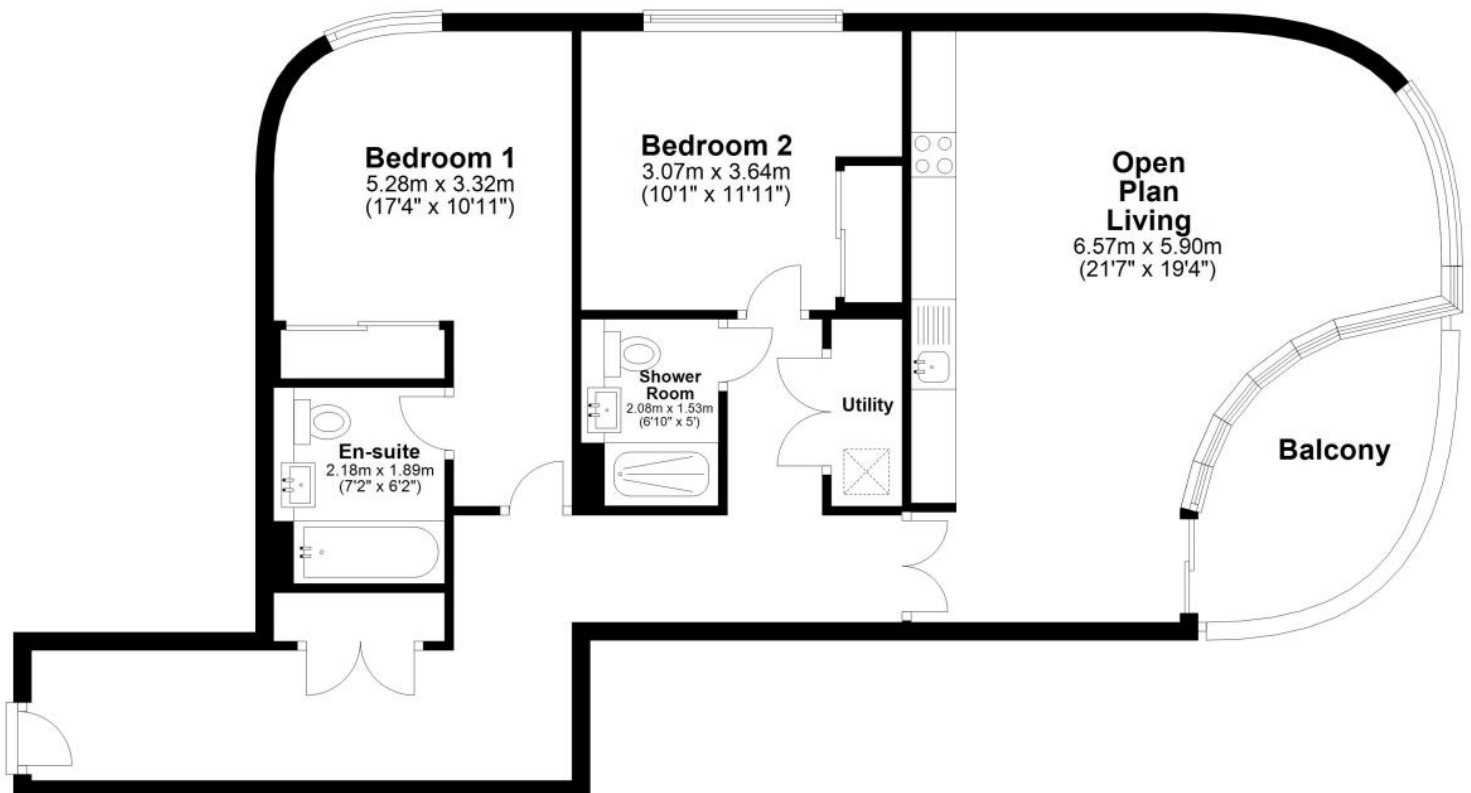
- 2 Bedrooms
- 2 Bathrooms
- Balcony
- Albert Embankment
- Residents gym
- Residents pool and spa
- Approx. 928.7 sq ft
- EPC:
- Leasehold

Floorplan

929 sq ft | 86 sq m

Ground Floor

Approx. 86.3 sq. metres (928.7 sq. feet)



Total area: approx. 86.3 sq. metres (928.7 sq. feet)

Floor Plan measurements are approximate and are for illustrative purposes only.
Plan produced using PlanUp.

Nine Elms
4 Riverlight Quay,
London SW11 8DG
+4420 3147 1333
lettingsnineelms@eu.jll.com

Urban living, your way.

jll.co.uk/residential

© 2019 Jones Lang LaSalle IP, Inc. All rights reserved. All information contained herein is from sources deemed reliable; however, no representation or warranty is made to the accuracy thereof.

