



## Vincent Square, London SW1P

Price £575 per week - Furnished





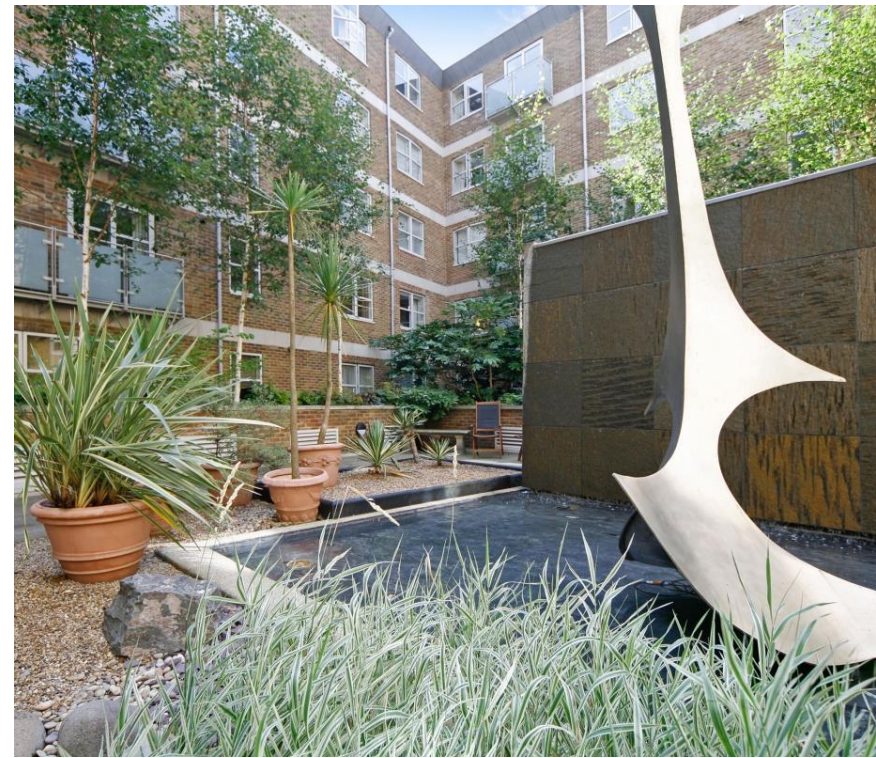


# Description

A very well presented first floor flat (with lift) in this well maintained building overlooking Vincent Square. The property consists of one double bedroom, one bathroom, reception room and a fully fitted kitchen. The flat also has the benefit of porterage, use of gym facilities and parking by separate negotiation. The Atrium is a popular building ideally located only a short walk to both Victoria and Pimlico underground stations.

As well as paying the rent, you may also be required to make some additional permitted payments. If your tenancy does not qualify as an AST, additional fees may apply. Please visit [jll.co.uk/fees](http://jll.co.uk/fees) for details of fees which may be payable when renting a property.

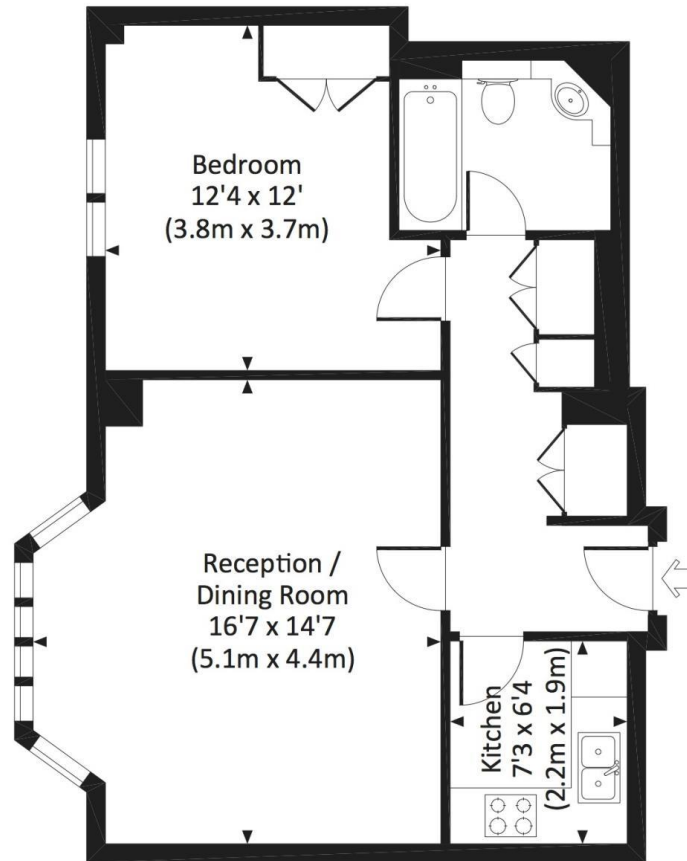
- 1 Double bedroom
- 1 Bathroom
- Reception room
- Fully fitted kitchen
- First floor
- Lift
- Porter
- Use of gym
- Parking by negotiation
- Approx. 548 sq ft (50 sq m)



# Floorplan

548 sq ft | 51 sq m

Approx. gross internal area  
548 Sq Ft. / 50.9 Sq M.



FIRST FLOOR

djd All measurements are approximate and for illustration purposes only as defined by the RICS Code of Measuring Practice © 2014 Dowling Jones Design www.dowlingjones.com 020 7610 9933

Westminster  
31 Palmer Street,  
Westminster SW1H 0NP  
+4420 7306 1630  
westminster@eu.jll.com

*Urban living, your way.*

[jll.co.uk/residential](http://jll.co.uk/residential)

© 2019 Jones Lang LaSalle IP, Inc. All rights reserved. All information contained herein is from sources deemed reliable; however, no representation or warranty is made to the accuracy thereof.

