



Monck Street, London SW1P

Price £675 per week - Furnished



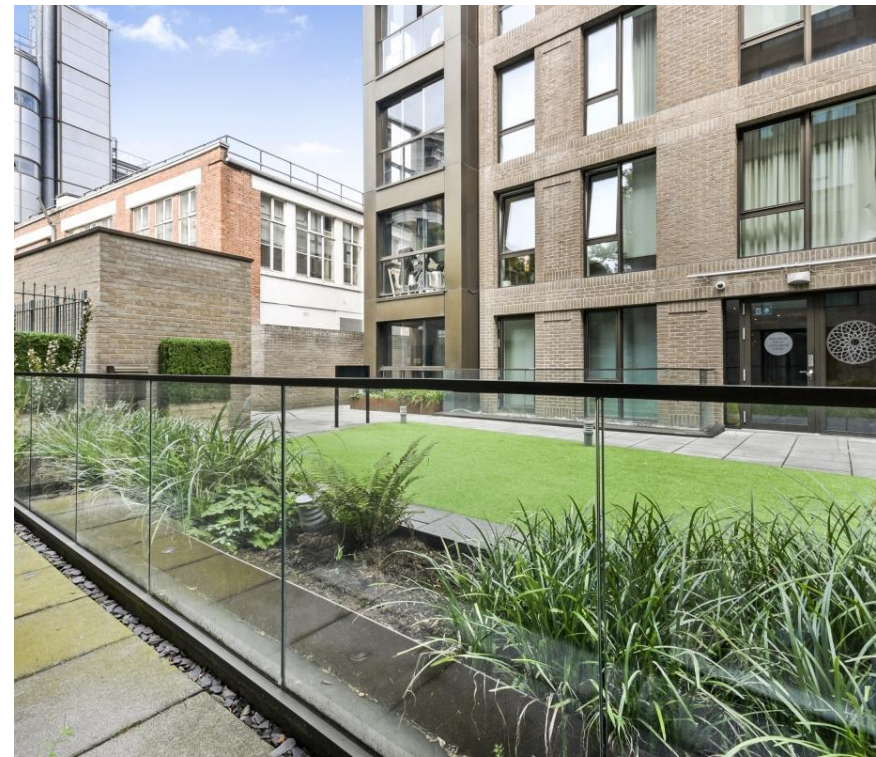


Description

A bright and charming ground floor apartment situated in Victoria. The property consists of one bedroom, one bathroom, reception, open plan kitchen and private gate entrance.

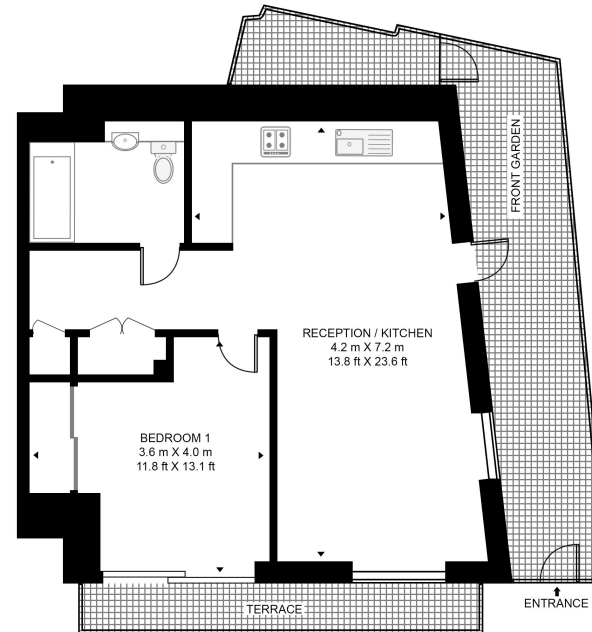
As well as paying the rent, you may also be required to make some additional permitted payments. If your tenancy does not qualify as an AST, additional fees may apply. Please visit jll.co.uk/fees for details of fees which may be payable when renting a property.

- One bedroom
- Bathroom
- Open plan kitchen
- Reception
- Private gate entrance
- Ground floor
- Furnished
- Approx. 505 sq ft (50 sq m)
- EPC: B



ELIZABETH COURT

APPROXIMATE GROSS INTERNAL FLOOR AREA 545 SQ.FT (50.6 SQ.M)



GROUND FLOOR



This floor plan has been defined by the RICS Code of Measurement. This floor plan and all others are for approximate representative purposes only and upon usage is agreed to as such by the client.
WWW: hdvirtualart.com | TEL: 0203.974.1567 | EMAIL: info@hdvirtualart.com

Chelsea
2 Cale Street,
London SW3 3QU
+4420 7399 5010
lettingschelsea@eu.jll.com

Urban living, your way.

jll.co.uk/residential

© 2019 Jones Lang LaSalle IP, Inc. All rights reserved. All information contained herein is from sources deemed reliable; however, no representation or warranty is made to the accuracy thereof.

