



Spital Square, London E1

Price £625 per week - Furnished







Description

A modern 2 bedroom apartment in the popular Spital Square development.

This well presented 2 bedroom apartment is situated on the 3rd with a south easterly aspect looking over the landscaped courtyard and views towards The City. The property comprises 2 double bedrooms with en-suite to master, living and dining area with fully fitted kitchen, generous sized balcony, newly refurbished bathroom and wooden flooring.

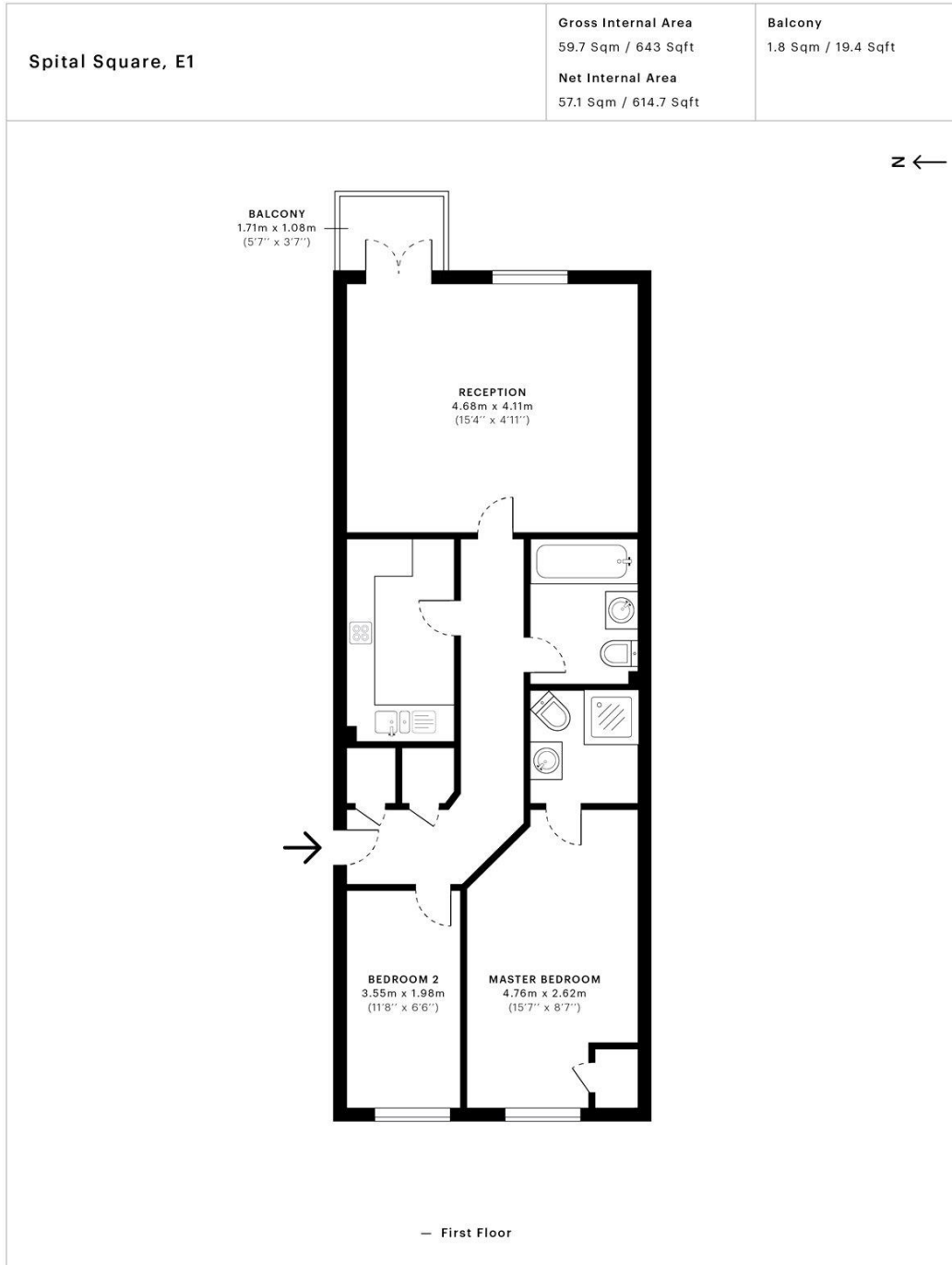
The development is situated next to Spitalfields Market and on the doorstep of the City of London. Located in Zone 1, the development is within easy walking distance to Shoreditch High Street Station and Liverpool Street Station (approximately 0.3 miles to each). Residents also benefit from 24 hour concierge and on site gym.

As well as paying the rent, you may also be required to make some additional permitted payments. If your tenancy does not qualify as an AST, additional fees may apply. Please visit jll.co.uk/fees for details of fees which may be payable when renting a property.

- 2 Bedrooms
- 2 Bathrooms
- Balcony
- Wood flooring
- 24 Hour concierge
- 0.3 miles to Liverpool Street Station
- Approx. 640 sq ft (59.5 sq m)
- Furnished
- EPC: C

Floorplan

640 sq ft | 60 sq m



This floor plan was captured for JLL, City Office on 13/03/2018. Architectural features to scale, derived from millions of laser scan points, accurate to +/- 3cm and produced in accordance with the Royal Institute of Chartered Surveyors Property Measurement standards. Gross Internal Area is measured from the internal faces of external walls and includes internal walls/obstructions. Net Internal Area excludes internal walls/obstructions. Please perform your own checks before relying on these figures in any transaction.



City
25 Walbrook The Walbrook
Building,
London EC4N 8AF
+4420 7337 4000

Urban living, your way.

jll.co.uk/residential

© 2019 Jones Lang LaSalle IP, Inc. All rights reserved. All information contained herein is from sources deemed reliable; however, no representation or warranty is made to the accuracy thereof.

