



Fulham Road, London SW6

Asking price £750,000 Leasehold







Description

Presenting a lovely 2-bedroom first-floor apartment, available for acquisition in the highly sought-after premises of a well-maintained and visually striking red brick mansion block.

The property comprises 2 double bedrooms, spacious bathroom, a separate kitchen followed by the reception room with large dual aspect windows.

Positioned a mere 0.3 miles away from Fulham Broadway (District line) and 0.7 miles from West Brompton stations (District line, Overground & Southern Rail services), this residence offers accessibility and convenience with shops, banks, excellent restaurants, wholefood market, gymnasium, parks, schools and nurseries... all within effortless reach.

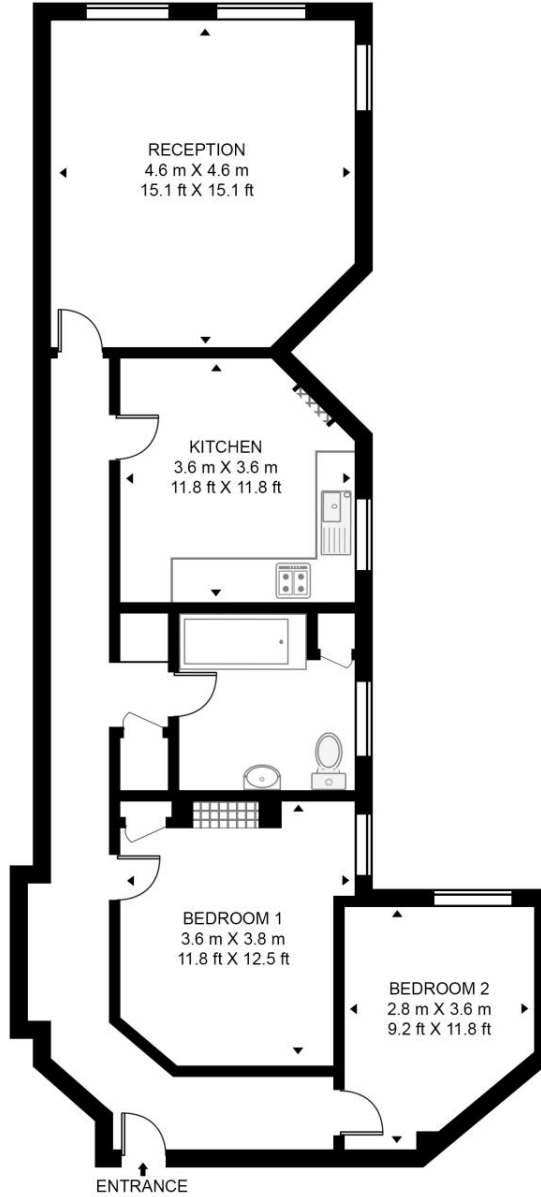
- Mansion block
- 2 Bedrooms
- First floor
- Fulham Broadway station 0.3 miles
- West Brompton station 0.7 miles
- EPC C
- 865 sq ft / 80 sq m

Floorplan

865 sq ft | 80 sq m

KING EDWARD MANSIONS

APPROXIMATE GROSS INTERNAL FLOOR AREA 865 SQ.FT (80.4 SQ.M)



FIRST FLOOR



This floor plan has been defined by the RICS Code of Measurement. This floor plan and all others are for approximate representative purposes only and upon usage is agreed to as such by the client.
WWW: hdvirtualart.com | TEL: 0203.974.1567 | EMAIL: info@hdvirtualart.com

Kensington
387 Kensington High Street,
London W14 8QA
+4420 7087 5696
lettingskensington@eu.jll.com

Urban living, your way.

jll.co.uk/residential

© 2019 Jones Lang LaSalle IP, Inc. All rights reserved. All information contained herein is from sources deemed reliable; however, no representation or warranty is made to the accuracy thereof.

