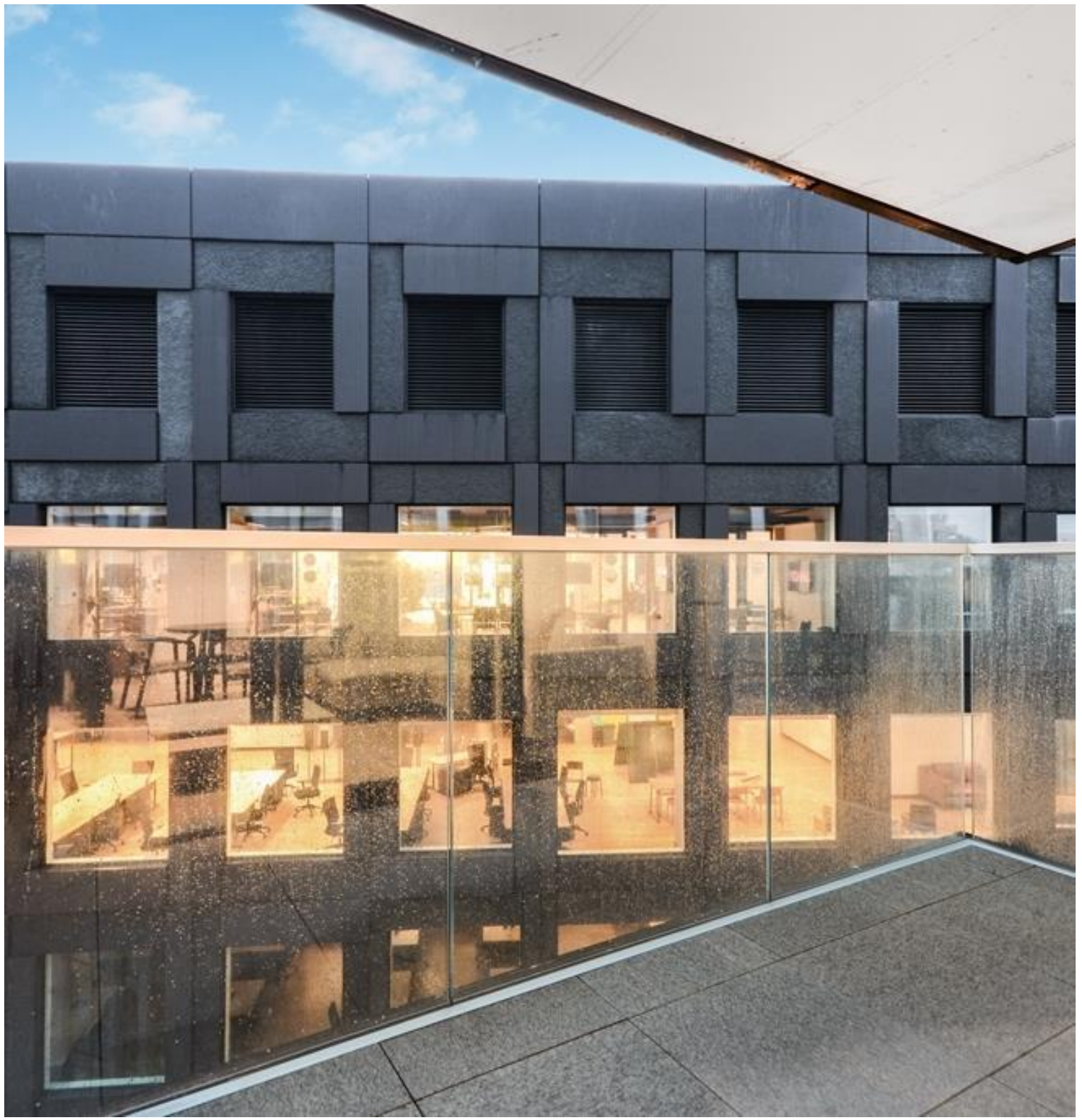




## City Road, London EC1V

Price £875 per week - Furnished







## Description

An 11th floor 2 bedroom apartment next to Old Street, EC1 situated within The Atlas Building.

This contemporary apartment comprises a spacious reception area with fully fitted kitchen, large private balcony with views towards the Olympic Park, master bedroom with dressing area and en suite shower room, second double bedroom with fitted wardrobes, contemporary bathroom with porcelain finish, wood flooring and comfort cooling / heating.

The Atlas Building is next to Old Street station (0.1 mile) and ideally situated for the City, Hoxton, Shoreditch and Angel. The development offers top of the range amenities which includes pool, spa, gymnasium, private cinema room, resident's only business lounge and 24 hour concierge.

As well as paying the rent, you may also be required to make some additional permitted payments. If your tenancy does not qualify as an AST, additional fees may apply. Please visit [jll.co.uk/fees](http://jll.co.uk/fees) for details of fees which may be payable when renting a property.

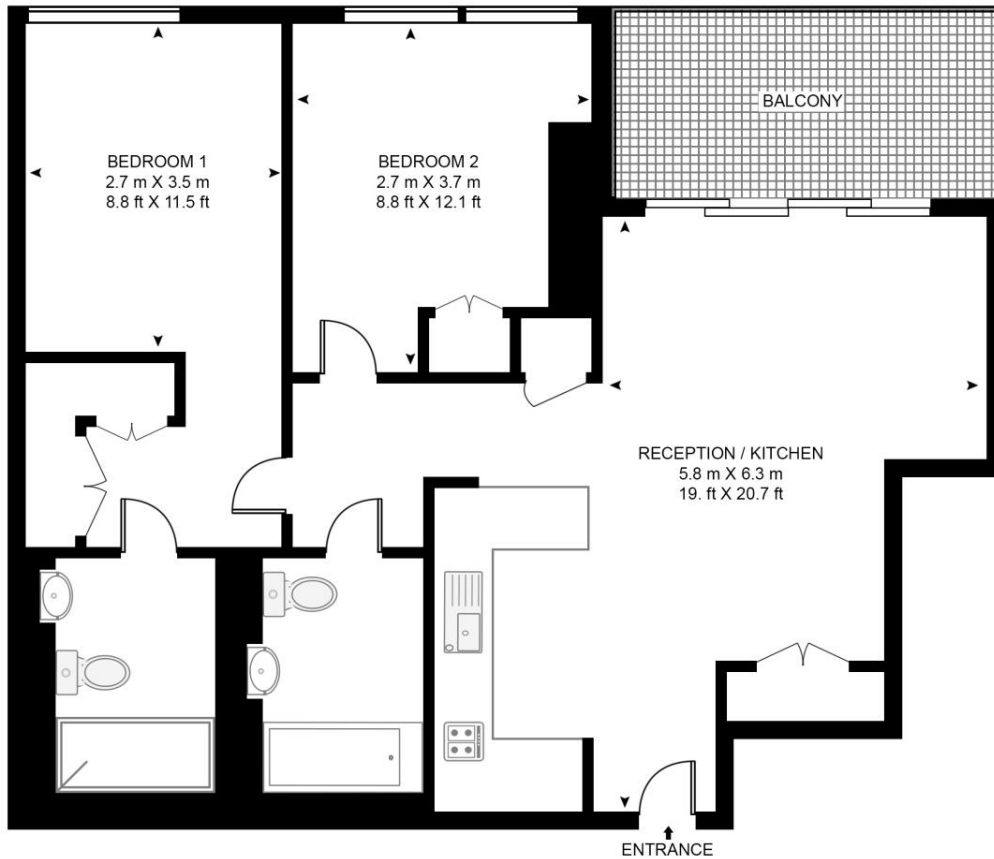
- 2 Bedrooms
- 2 Bathrooms
- 11th Floor
- Private balcony
- Residents gym
- Residents pool and spa
- Residents cinema
- 24 hour concierge
- 0.1 miles from Old Street Station
- Approx. 764 sq ft (71 sq m)

# Floorplan

764 sq ft | 71 sq m

## ATLAS BUILDING, 145 CITY ROAD

APPROXIMATE GROSS INTERNAL FLOOR AREA 764 SQ.FT (71 SQ.M)



ELEVENTH FLOOR

**HDVA**

This floor plan has been defined by the RICS Code of Measurement. This floor plan and all others are for approximate representative purposes only and upon usage is agreed to as such by the client.

WWW: [hdvirtualart.com](http://hdvirtualart.com) | TEL: 0203.974.1567 | EMAIL: [info@hdvirtualart.com](mailto:info@hdvirtualart.com)

City  
25 Walbrook The Walbrook  
Building,  
London EC4N 8AF  
+4420 7337 4000

*Urban living, your way.*

[jll.co.uk/residential](http://jll.co.uk/residential)

© 2019 Jones Lang LaSalle IP, Inc. All rights reserved. All information contained herein is from sources deemed reliable; however, no representation or warranty is made to the accuracy thereof.

