



## Draycott Place, London SW3

Price £700 per week - Part Furnished





# Description

A well presented first floor flat (with lift) in this period building in the heart of Chelsea. The property consists of two double bedrooms, one bathroom, a spacious reception room and a fully fitted kitchen. The flat benefits from wooden flooring in the reception room and an abundance of natural light. Draycott Place is close to all the amenities with plenty of shops, bars and restaurants within walking distance.

As well as paying the rent, you may also be required to make some additional permitted payments. If your tenancy does not qualify as an AST, additional fees may apply. Please visit [jll.co.uk/fees](http://jll.co.uk/fees) for details of fees which may be payable when renting a property.

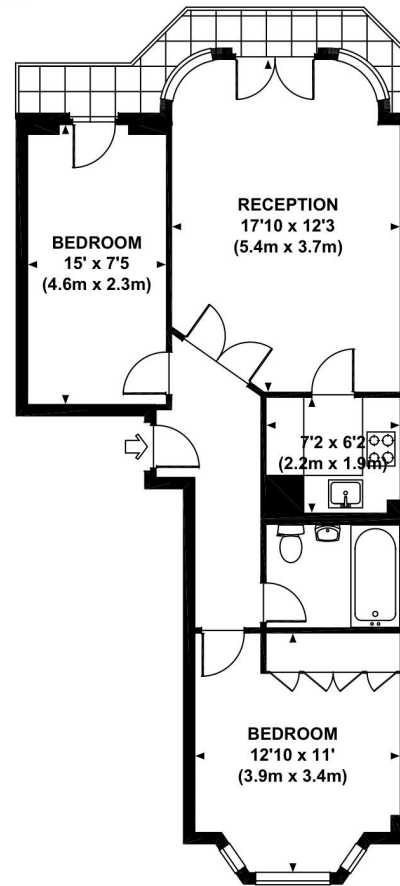
- 2 Double bedrooms
- 1 Bathroom
- Reception room
- Fully fitted kitchen
- First floor
- Lift
- Approx. 610 sq ft (56 sq m)
- Furnished
- EPC: D



# Floorplan

610 sq ft | 57 sq m

Approx. gross internal area  
610 Sq Ft. / 56.7 Sq M.



FIRST FLOOR

All measurements are approximate and for illustration purposes only as defined by the RICS Code of Measuring Practice © 2012  
Dawling Jones Design www.dawlingjones.com 020 7610 9933

Chelsea  
2 Cale Street,  
London SW3 3QU  
+4420 7399 5010  
lettingschelsea@eu.jll.com

*Urban living, your way.*

[jll.co.uk/residential](http://jll.co.uk/residential)

© 2019 Jones Lang LaSalle IP, Inc. All rights reserved. All information contained herein is from sources deemed reliable; however, no representation or warranty is made to the accuracy thereof.

