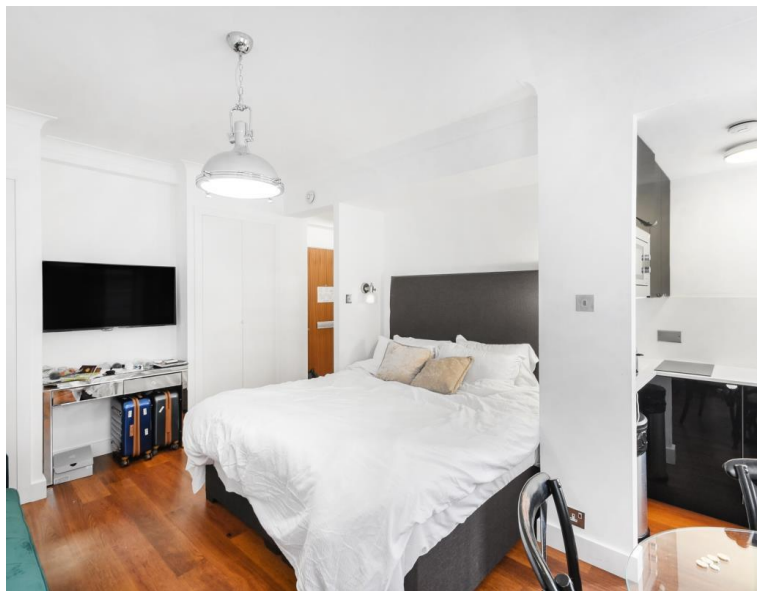




## Sloane Avenue, London SW3

Guide price £475,000 Share of Freehold







## Description

Located on the 2nd floor of this much sought-after art deco block, this bright and well presented studio makes for an excellent investment or pied a terre.

Nell Gwynn House is located on Sloane Avenue which is in close proximity to Sloane Square, South Kensington and the King's Road.

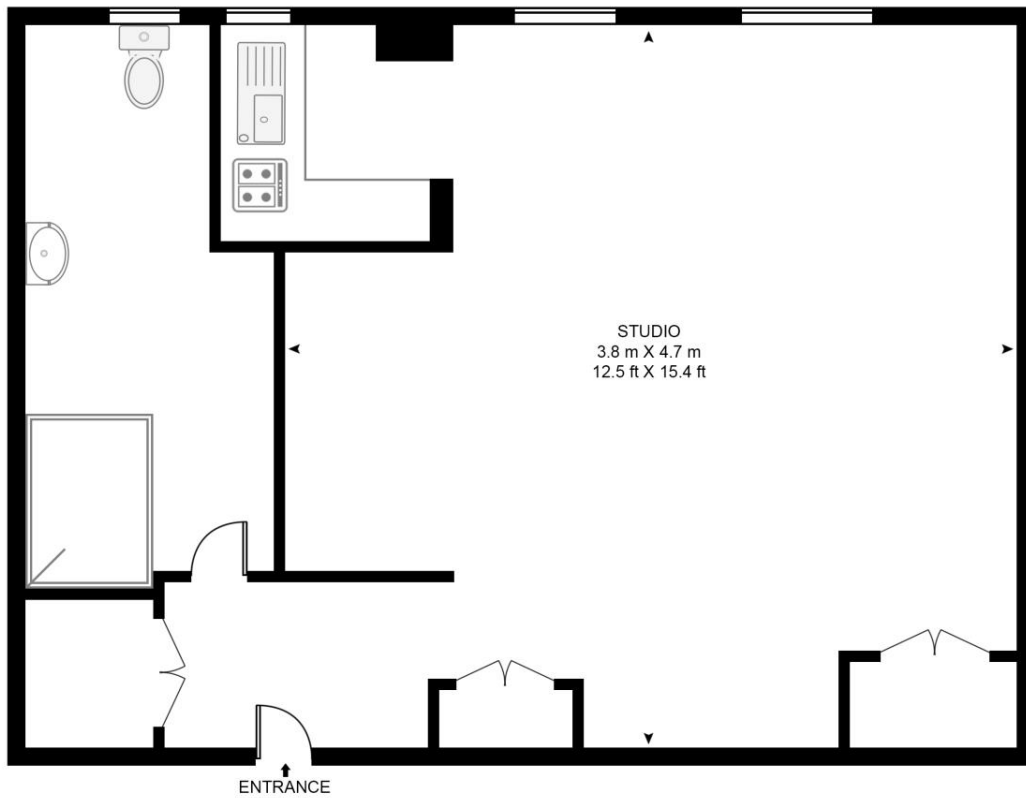
- Studio apartment
- 2nd floor
- Exceptionally bright
- Portered building
- Superb location
- Share of freehold

# Floorplan

sq ft | sq m

## NELL GWYNN HOUSE

APPROXIMATE GROSS INTERNAL FLOOR AREA 284 SQ.FT (26.4 SQ.M)



## SECOND FLOOR



This floor plan has been defined by the RICS Code of Measurement. This floor plan and all others are for approximate representative purposes only and upon usage is agreed to as such by the client.  
WWW: [hdvirtualart.com](http://hdvirtualart.com) | TEL: 0203.974.1567 | EMAIL: [info@hdvirtualart.com](mailto:info@hdvirtualart.com)

Knightsbridge  
174 Brompton Road,  
London SW3 1HP  
+4420 7306 1600  
[lettingsknightsbridge@eu.jll.co](mailto:lettingsknightsbridge@eu.jll.co)

*Urban living, your way.*

[jll.co.uk/residential](http://jll.co.uk/residential)

© 2019 Jones Lang LaSalle IP, Inc. All rights reserved. All information contained herein is from sources deemed reliable; however, no representation or warranty is made to the accuracy thereof.

