

# Cleveland Street, London W1T

Price £1,200 per week - Furnished











## Description

This one bedroom apartment has been crafted to the highest of specifications with a spacious and open plan living space featuring an Italian designed Kitchen with integrated Miele appliances, well-proportioned bedroom with built in wardrobes and elegant bathroom suite with rainfall shower. The apartment further benefits from engineered timber chevron flooring throughout, comfort cooling, underfloor heating and a private balcony.

The development provides residents with the highest quality on site facilities, including a 24 hour concierge team, residents gym & wellness suite, residents lounge, business suite, private dining space and landscaped roof top providing a tranquil space to relax after a busy day.

\*Images are representative, floor plans and videos are available upon request.

As well as paying the rent, you may also be required to make permitted payments. Please visit [jll.co.uk/fees](http://jll.co.uk/fees) for details of fees which may be payable when renting a property. If your tenancy does not qualify as an AST, additional fees may apply.

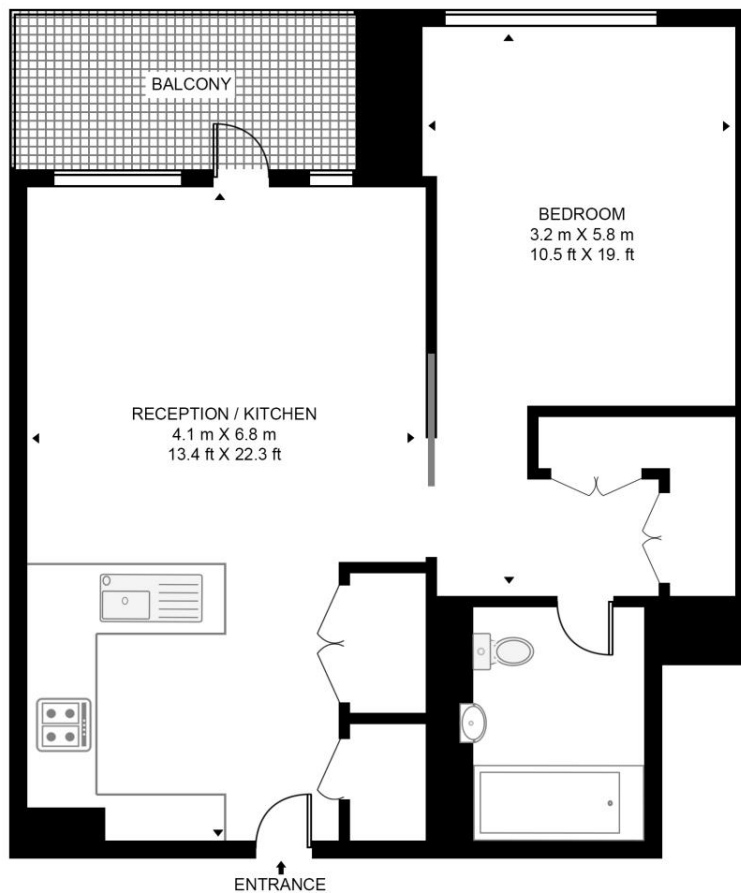
- Modern Development
- 24 hr concierge
- Open-Plan Kitchen
- Furnished
- Wooden Flooring
- Gym
- Communal Terrace
- Images are CGI

# Floorplan

540 sq ft | 50 sq m

## CLEVELAND STREET

APPROXIMATE GROSS INTERNAL FLOOR AREA 540 SQ.FT (50.2 SQ.M)



FIFTH FLOOR



This floor plan has been defined by the RICS Code of Measurement. This floor plan and all others are for approximate representative purposes only and upon usage is agreed to as such by the client.

WWW: [hdvirtualart.com](http://hdvirtualart.com) | TEL: 0203.974.1567 | EMAIL: [info@hdvirtualart.com](mailto:info@hdvirtualart.com)

Mayfair and Marylebone  
13a St George Street,  
London W1S 2FQ  
+44 207 399 5550  
[mayfair@jll.com](mailto:mayfair@jll.com)

*Urban living, your way.*

[jll.co.uk/residential](http://jll.co.uk/residential)

© 2019 Jones Lang LaSalle IP, Inc. All rights reserved. All information contained herein is from sources deemed reliable; however, no representation or warranty is made to the accuracy thereof.

