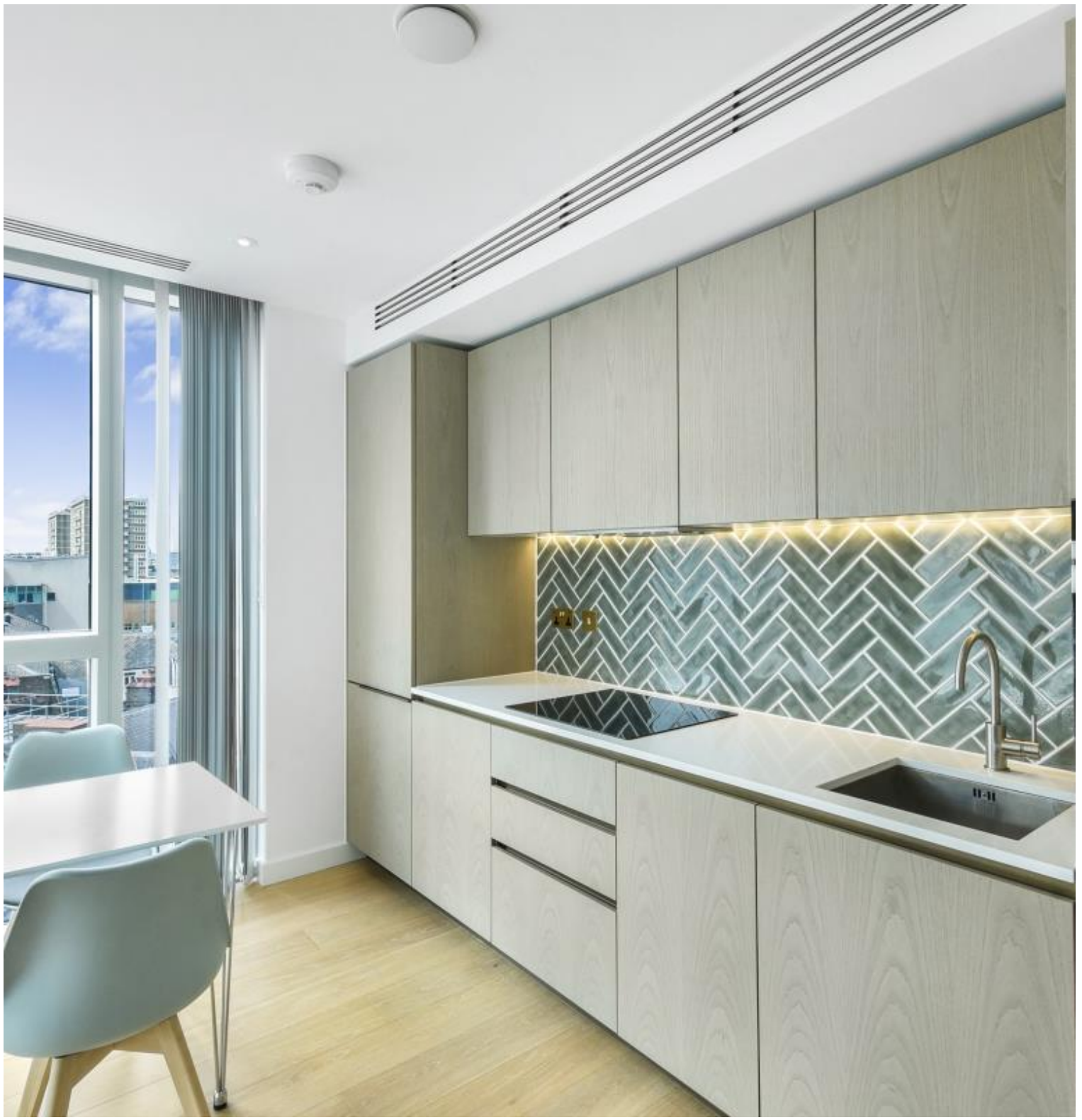




City Road, London EC1V

Price £595 per week - Furnished







Description

A studio apartment in the Atlas Building, EC1 situated next to Old Street.

This well presented studio is situated on the 7th floor and boasts a spacious open plan reception with fully fitted kitchen, partitioned sleeping area with large fitted wardrobes, private balcony, luxury Porcelain bathroom, comfort cooling and heating, and solid wood flooring.

The Atlas Building is next to Old Street station (0.1 mile) and ideally situated for the City, Hoxton, Shoreditch and Angel. The development offers top of the range amenities which includes pool, spa, gymnasium, private cinema room, resident's only business lounge and 24 hour concierge.

We understand that cooling / heating is delivered via a communal system for which separate charges apply.

As well as paying the rent, you may also be required to make some additional permitted payments. If your tenancy does not qualify as an AST, additional fees may apply. Please visit jll.co.uk/fees for details of fees which may be payable when renting a property.

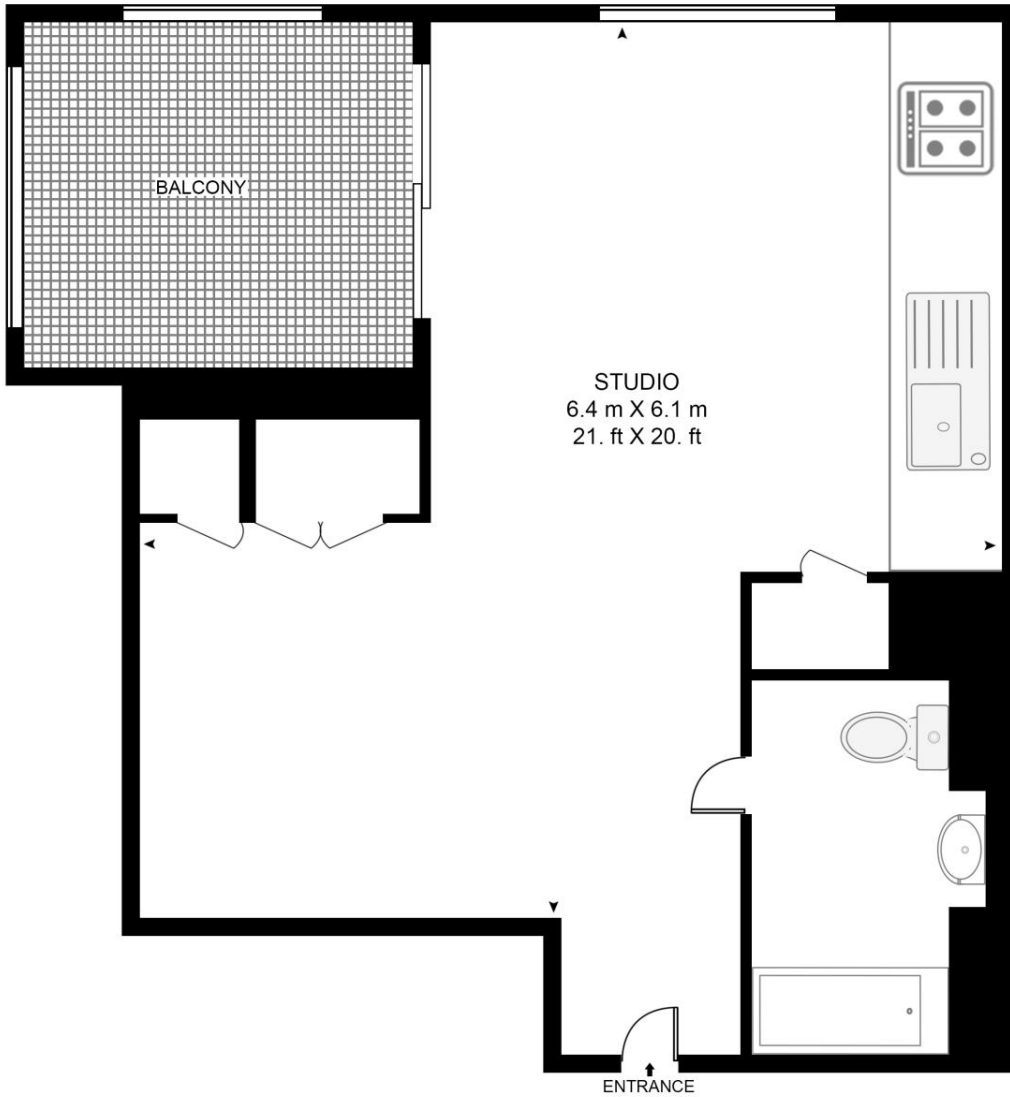
- Studio
- 1 Bathroom
- Private balcony
- 24 hour concierge
- Residents pool
- Residents gym
- Residents cinema
- 0.1 miles from Old Street Station
- Approx. 400 sq ft (37.2 sq m)
- Leasehold

Floorplan

400 sq ft | 37 sq m

THE ATLAS BUILDING, 145 CITY ROAD

APPROXIMATE GROSS INTERNAL FLOOR AREA 392 SQ.FT (36.4 SQ.M)



SEVENTH FLOOR



This floor plan has been defined by the RICS Code of Measurement. This floor plan and all others are for approximate representative purposes only and upon usage is agreed to as such by the client.
WWW: hdvirtualart.com | TEL: 0203.974.1567 | EMAIL: info@hdvirtualart.com

City
25 Walbrook The Walbrook
Building,
London EC4N 8AF
+4420 7337 4000

Urban living, your way.

jll.co.uk/residential

© 2019 Jones Lang LaSalle IP, Inc. All rights reserved. All information contained herein is from sources deemed reliable; however, no representation or warranty is made to the accuracy thereof.

