



New Bond Street, London W1S

Price £1,250 per week - Furnished







Description

A recently refurbished second floor apartment, situated in the heart of Mayfair on New Bond Street. The property has contemporary furniture throughout and comprises a spacious open plan living room complete with an integrated kitchen and solid wood flooring, two large double bedrooms, and a modern family bathroom.

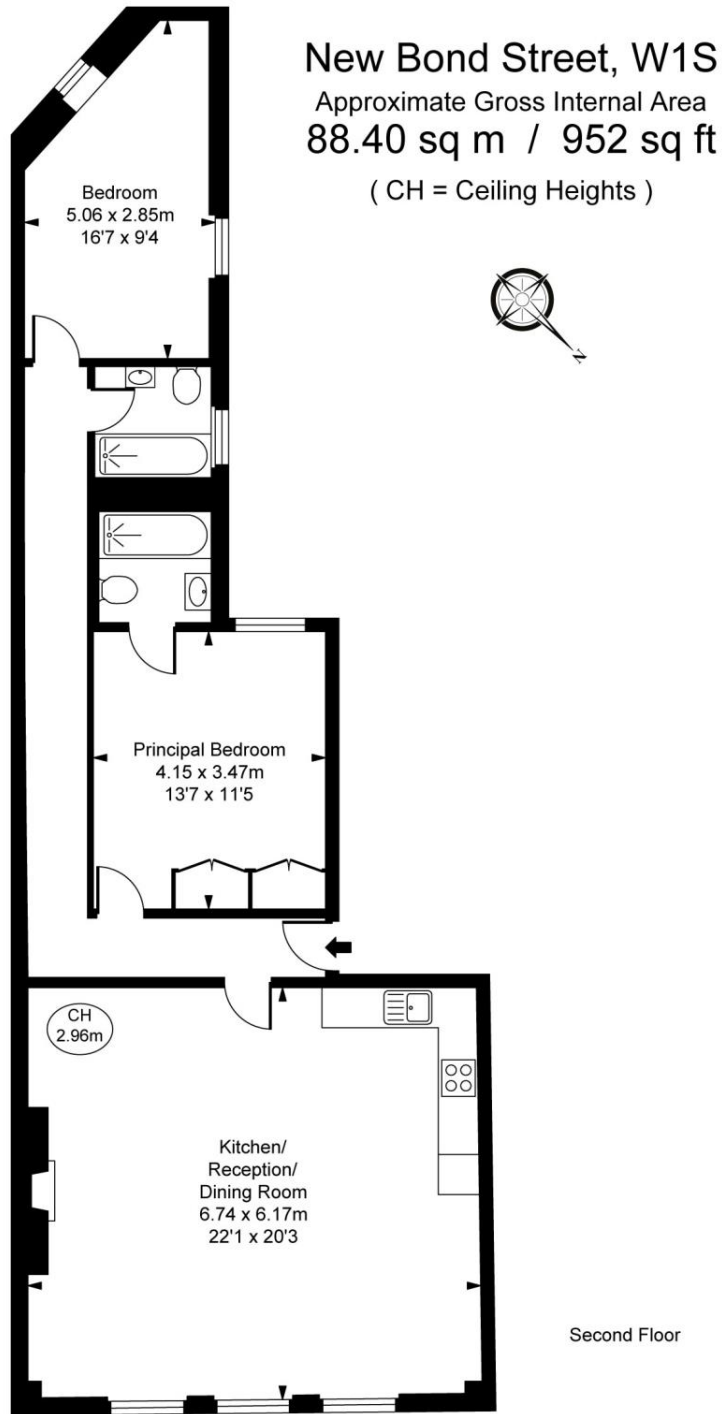
New Bond Street runs between Oxford Circus and Green Park and the property benefits from the outstanding amenities of Bond Street, Oxford Circus and Green Park.

As well as paying the rent, you may also be required to make any applicable permitted payments. If your tenancy does not qualify as an AST, additional fees may apply. Please visit jll.co.uk/fees for details of fees which may be payable when renting a property.

- Recently Refurbished
- Open-Plan Kitchen
- Solid Wood Flooring
- Furnished
- Two Double Bedrooms
- Two Bathrooms
- 88sq m / 952sq ft
- Amazing Location

Floorplan

937 sq ft | 87 sq m



This plan is not to scale. It is for guidance and not for valuation purposes.
All measurements and areas are approximate only, and have been prepared in accordance with the current edition of the RICS Code of Measuring Practice.
© Fulham Performance

Mayfair and Marylebone
JLL, 30 Warwick Street,
London W1B 5NH
+44 207 399 5550
tenancymanagement@eu.jll.c

Urban living, your way.

jll.co.uk/residential

© 2019 Jones Lang LaSalle IP, Inc. All rights reserved. All information contained herein is from sources deemed reliable; however, no representation or warranty is made to the accuracy thereof.

