



Chelsea Manor Street, London SW3

Guide price £750,000 Share of Freehold







Description

A well presented lower ground floor flat in this portered building, located just off the King's Road and within walking distance of Sloane Square.

The property consists of one double bedroom, one bathroom, reception room and a fully fitted kitchen. The flat has been decorated and furnished in a contemporary style and it further benefits from wooden flooring throughout.

Early viewings are highly recommended.

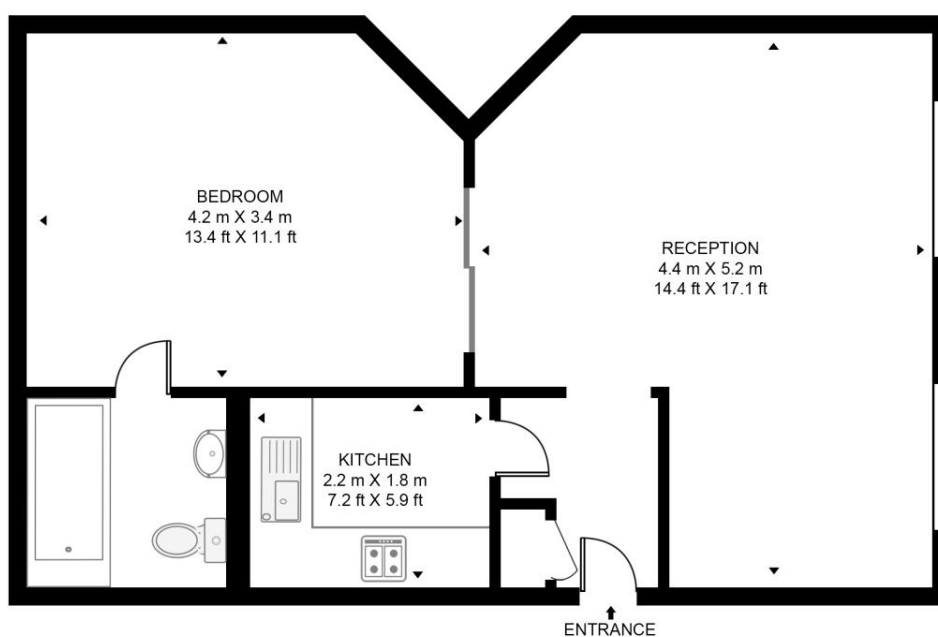
- 1 Double bedroom
- 1 Bathroom
- Reception room
- Fully fitted kitchen
- Porter
- Heating & hot water inclusive
- Approx. 491 sq ft (45 sq m)
- No onward chain
- EPC: C

Floorplan

470 sq ft | 44 sq m

MERIDEN COURT

APPROXIMATE GROSS INTERNAL FLOOR AREA 470 SQ.FT (43.7 SQ.M)



LOWER GROUND FLOOR



This floor plan has been defined by the RICS Code of Measurement. This floor plan and all others are for approximate representative purposes only and upon usage is agreed to as such by the client.

WWW: hdvirtualart.com | TEL: 0203.974.1567 | EMAIL: info@hdvirtualart.com

Knightsbridge
174 Brompton Road,
London SW3 1HP
+4420 7306 1600
lettingsknightsbridge@eu.jll.co

Urban living, your way.

jll.co.uk/residential

© 2019 Jones Lang LaSalle IP, Inc. All rights reserved. All information contained herein is from sources deemed reliable; however, no representation or warranty is made to the accuracy thereof.

