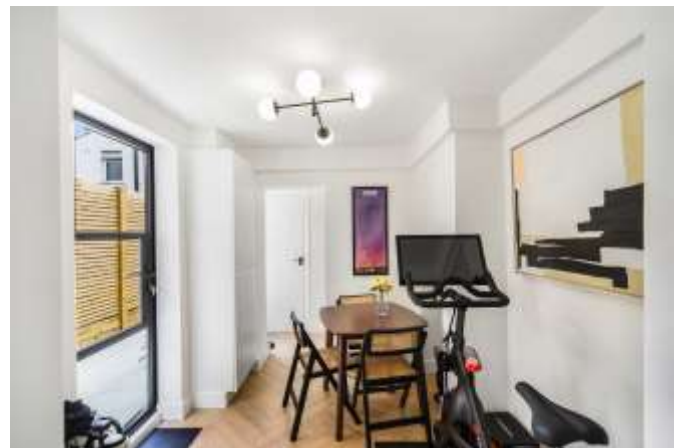




**MAURITIUS ROAD,
GREENWICH, SE10**





Located in East Greenwich, this recently renovated beautiful two bedroom period terrace is a stone's throw from the river and some fantastic pubs and cafes.

The accommodation has been meticulously restored to a high standard, retaining many of the original Victorian features. The ground floor includes a new island kitchen with quartz worktops, self-cleaning oven, built in speaker system and appliances (including dishwasher), as well as cozy lounge with original cornicing and working fireplace for those winter evenings. To the rear of the property there is a handy utility room, spacious WC, as well a separate dining room giving access to the south facing garden, which benefits from great light throughout the day, perfect for those summer BBQs.

On the first floor you'll find original fireplaces in every room, the large master bedroom includes excellent storage, while the generous second double bedroom also currently acts as a south facing office. The bathroom is spacious with large freestanding tub and separate shower.

The property also benefits from a new roof and windows throughout and many of the houses on the street have extended into the loft (subject to planning permission)

All renovations are complete apart from a new steel railing and gate in traditional style is due to be installed in the next few weeks. Design can be shared by the seller.

- 2 Double bedrooms
- 1 Bathroom
- Victorian terraced house
- South-facing Garden
- Beautifully renovated throughout.
- Popular location
- Close to transport links
- Full Fibre broadband up to 3GB
- Royal Borough of Greenwich
- EPC: C

PRICE

Asking Price £735,000

GROSS INTERNAL AREA

815 sq ft (74.8 sq m)

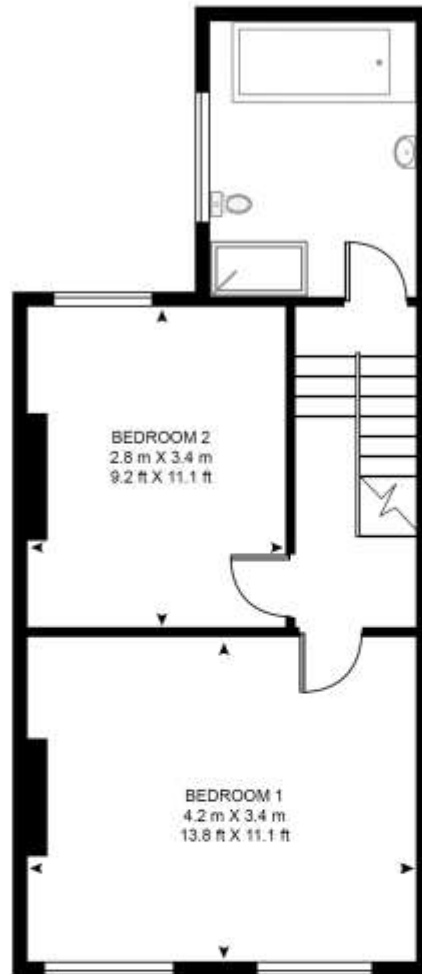
Mauritius road is a quiet road with no through traffic, it provides great access to Maze Hill train station, and the Jubilee line at the O2, with connecting buses just a minutes' walk away. You're a couple of minutes from the river where you can take the picturesque stroll via the Thames Path to the Trafalgar Tavern and Greenwich Market. Greenwich Park is a 15-minute walk away. Some other fantastic local pubs, including the Pelton Arms, and The Cutty Sark are just round the corner, and you'll find several cafes in the area.

MAURITIUS ROAD

APPROXIMATE GROSS INTERNAL FLOOR AREA 815 SQ.FT (75.8 SQ.M)



GROUND FLOOR



FIRST FLOOR



HDVA

This floor plan has been defined by the RICS Code of Measurement. This floor plan and all others are for approximate representative purposes only and upon usage is agreed to as such by the client.

WWW: hdvirtualart.com | TEL: 0203.974.1567 | EMAIL: info@hdvirtualart.com

22 College Approach
Greenwich
London
SE10 9HY

These particulars are for general information only and do not constitute any part of an offer or contract. All statements contained therein are made without responsibility on the part of the vendors or lessors and are not to be relied upon as statement or representation of fact. Intending purchasers or lessees must satisfy themselves, by inspection, or otherwise, as to the correctness of each of the statements or dimensions contained in these particulars..