



## Albert Square, London E15

Asking price £850,000 Freehold







## Description

Exclusive to the market becomes available a five bedroom, three bathroom house with separate studio/home office which has been involved in what can only be described as a stunning and complete transformation from top to bottom. The entire house has undergone a complete transformation using first class materials, ensuring that every corner exuded elegance and sophistication comprising 2 reception rooms, large kitchen/diner leading to low maintenance and well landscaped garden, downstairs w/c, 5 bedrooms, 2 bathrooms and studio/home office with a third bathroom. The designer wood flooring perfectly complemented the sleek and modern Italian kitchen, which is undoubtedly the centrepiece of the renovation project. The Italian kitchen boasted custom-made cabinetry, carefully crafted to provide ample storage space while maintaining a minimalist aesthetic. High-end stainless steel appliances, including a built-in refrigerator and a full size wine cooler. The bathrooms have been completely renovated, featuring top-of-the-line fixtures, elegant tiling, and modern vanities. The outdoor space also underwent a remarkable transformation. The garden became an extension of the interior, with the addition of a stylish guest house/gym/home office featuring good size room with a bathroom. \*Please get in touch to discuss in more detail the building and renovation works\*

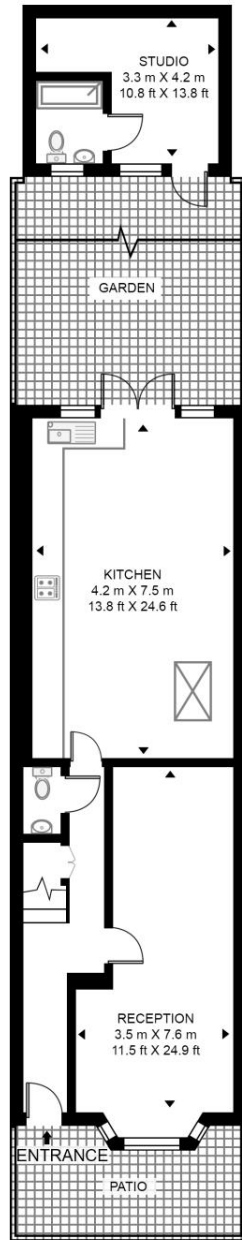
- Top of the range refurbishment
- Ultra modern throughout
- Quiet residential street
- 5 bedrooms
- 3 bathrooms
- Fully integrated kitchen
- Walking distance to both Maryland Station and Stratford Station
- Walking distance to Westfield shopping centre
- Approx. 1831 sq. ft (170.1 sq. m.)
- EPC rating: C

# Floorplan

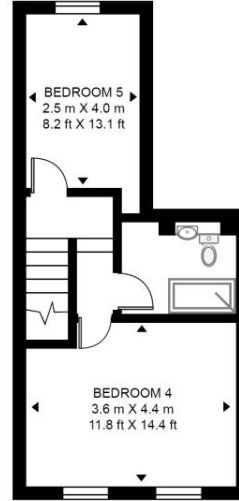
1,831 sq ft | 170 sq m

## ALBERT SQUARE

APPROXIMATE GROSS INTERNAL FLOOR AREA 1831 SQ.FT (170.1 SQ.M)  
(INCLUDING STUDIO)



GROUND FLOOR



SECOND FLOOR



FIRST FLOOR



This floor plan has been defined by the RICS Code of Measurement. This floor plan and all others are for approximate representative purposes only and upon usage is agreed to as such by the client.

WWW: [hdvirtualart.com](http://hdvirtualart.com) | TEL: 0203.974.1567 | EMAIL: [info@hdvirtualart.com](mailto:info@hdvirtualart.com)

Stratford  
5 Station Street,  
London E15 1DA  
+4420 3147 1500  
[salesstratford@eu.jll.com](mailto:salesstratford@eu.jll.com)

*Urban living, your way.*

[jll.co.uk/residential](http://jll.co.uk/residential)

© 2019 Jones Lang LaSalle IP, Inc. All rights reserved. All information contained herein is from sources deemed reliable; however, no representation or warranty is made to the accuracy thereof.

