



**ARBOR HOUSE, MOULDING LANE,
LONDON, SE14**





JLL are pleased to offer this stunning, modern one bedroom apartment on the fourth floor in the exciting, new Anthology Deptford Foundry development.

This lovely apartment offers a high standard of finish and is light and airy throughout. It briefly comprises entrance hallway with plenty of storage, open plan reception room leading to a private balcony and fantastic modern kitchen with a range of integrated appliances, double bedroom with built in wardrobes and modern bathroom.

Additional benefits also include bike storage and a 12 hour concierge service.

Early viewings are highly recommended.

- 1 Bedroom
- 1 Bathroom
- Balcony
- 4th Floor
- Modern apartment
- Great storage
- Light and spacious
- Bike Store
- EWS1 Compliant
- 12 Hour concierge
- EPC: B

PRICE

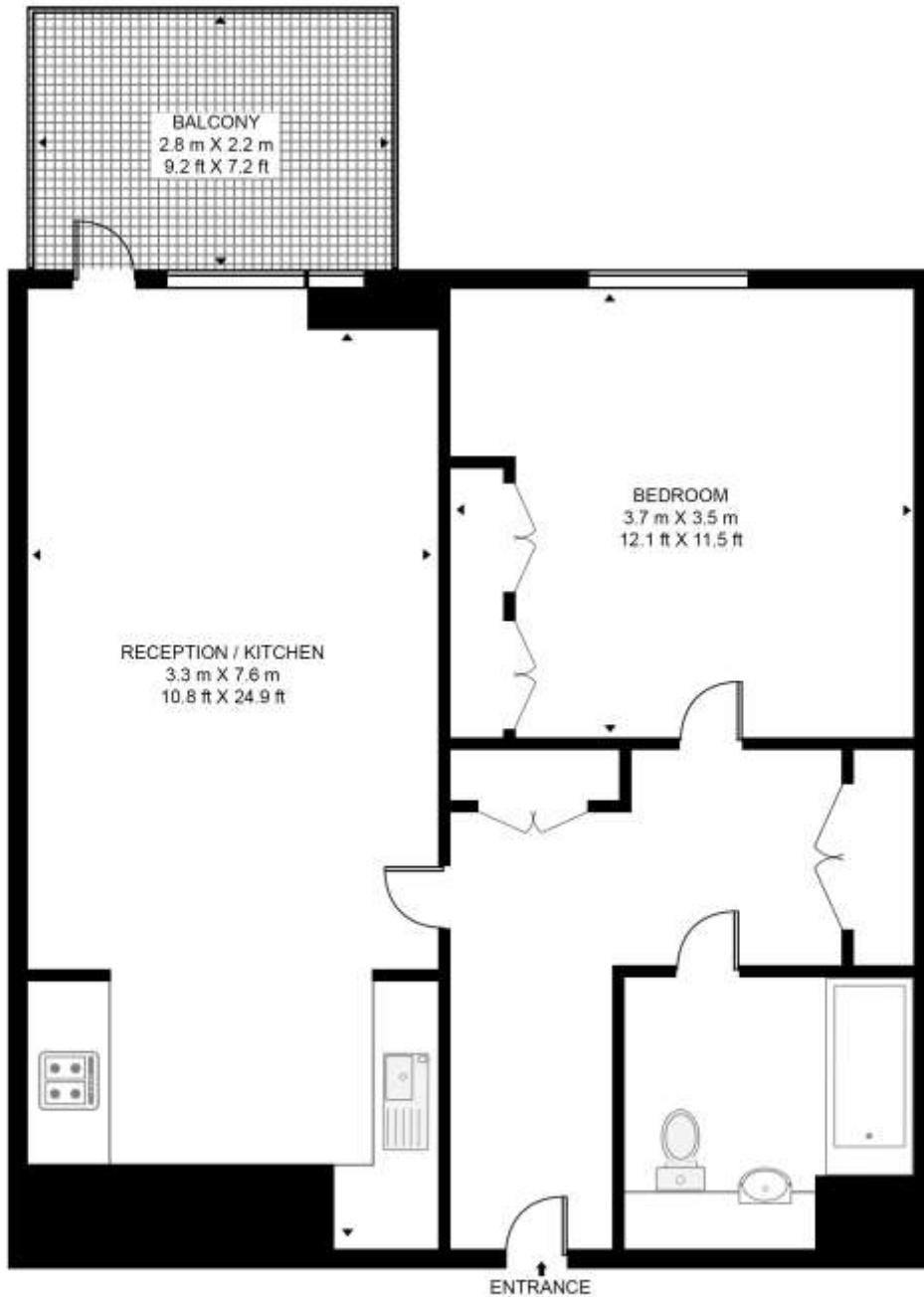
OIEO £350,000

GROSS INTERNAL AREA

574.sq ft (53.3 sq m)

ARBOR HOUSE

APPROXIMATE GROSS INTERNAL FLOOR AREA 574 SQ.FT (53.3 SQ.M)



HDVA

This floor plan has been defined by the RICS Code of Measurement. This floor plan and all others are for approximate representative purposes only and upon usage is agreed to as such by the client.

WWW: hdvirtualart.com | TEL: 0203.974.1567 | EMAIL: info@hdvirtualart.com

22 College Approach
Greenwich
London
SE10 9HY

These particulars are for general information only and do not constitute any part of an offer or contract. All statements contained therein are made without responsibility on the part of the vendors or lessors and are not to be relied upon as statement or representation of fact. Intending purchasers or lessees must satisfy themselves, by inspection, or otherwise, as to the correctness of each of the statements or dimensions contained in these particulars..