



City Peninsular, 25 Barge Walk, Greenwich, London SE10 0FP



City Peninsula, Barge Walk, Greenwich, SE10 Leasehold

A light and spacious two bedroom modern apartment in the sought after development in City Peninsula with panoramic views from the 12th floor this apartment represents a fantastic purchase.

Key Features

- 2 Double bedrooms
- 2 Bathrooms
- Large balcony
- Parking
- 12th Floor
- Riverside development
- North Greenwich tube (Jubilee)
- EPC: B

The accommodation comprises large entrance hall with built in storage, open plan reception room with a fitted kitchen and access to a large balcony. Two double bedrooms, master with built in wardrobes and both with access to a large balcony. En-suite shower room off the master bedroom and a separate family bathroom.

The property also has a balcony to really take advantage of the spectacular views of the River Thames from the corner of the balcony. We urge any city professional to view immediately as this property would be a commuter's dream.

Early viewings are highly recommended.



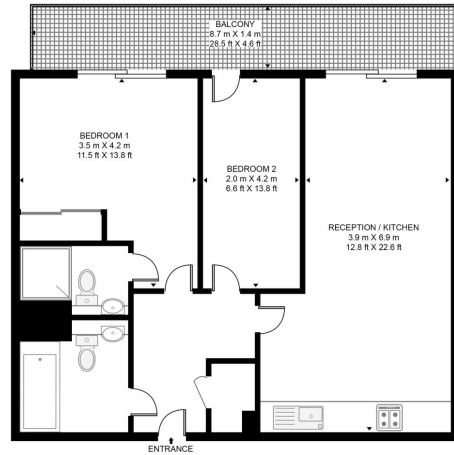






BARGE WALK

APPROXIMATE GROSS INTERNAL FLOOR AREA 631 SQ.FT (58.6 SQ.M)



TWELFTH FLOOR



This floor plan has been defined by the RICS Code of Measurement. This floor plan and all others are for approximate representative purposes only and upon usage is agreed to as such by the client.
WWW: hdvart.com | TEL: 0203 974 1987 | EMAIL: info@hdvart.com

22 College Approach,
Greenwich, SE10 9HY

Sales, Lettings & Property Management

Tel: 020 8858 9986

residential.jll.co.uk

