



Park Street, London SW6
Price £1,550 per week - Unfurnished







Description

A stunning three bedroom property in the exclusive Chelsea Creek development. Property comprises a large bright open plan kitchen and living room leading to a private balcony, three double bedrooms (two en-suite), large family sized bathroom, reception hall and storage room. Other benefits include wood floors, lift, underfloor heating, comfort cooling, 24 hour concierge and security, gym, swimming pool and an off street parking space.

As well as paying the rent, you may also be required to make some additional permitted payments. If your tenancy does not qualify as an AST, additional fees may apply. Please visit jll.co.uk/fees for details of fees which may be payable when renting a property.

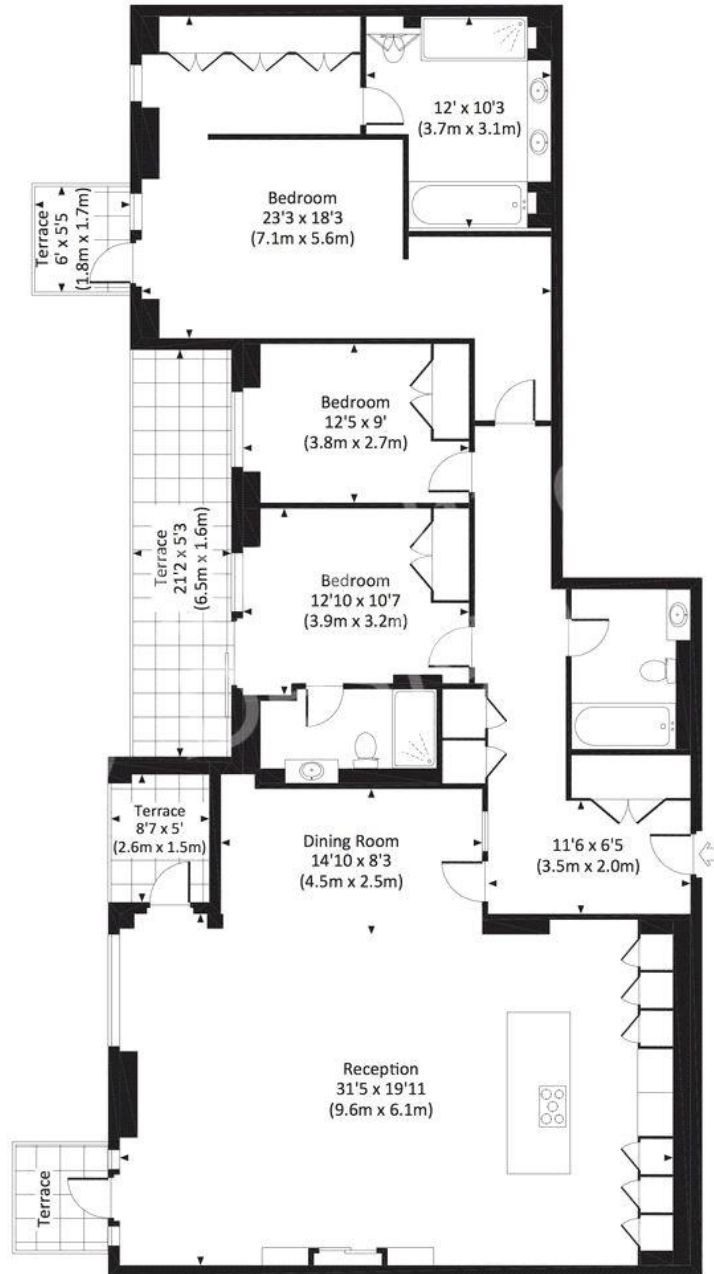
- 3 Bedrooms
- 3 Bathrooms
- 2 Private balconies
- 24 hour concierge and security
- Gym, swimming pool, meeting room
- Approx 1798 sq ft (167 sq m)
- Unfurnished
- EPC: B

Floorplan

1,798 sq ft | 167 sq m

PARK STREET, SW6

Approx. gross internal area
1798 Sq Ft. / 167.0 Sq M.



FIFTH FLOOR



All measurements have been made in accordance with RICS Code of Measuring Practice which are approximate only and only for illustrative purposes. For the avoidance of doubt, Dowling Jones Design shall not be liable for any reliance on these measurements. © 2015 www.dowlingjones.com 020 7610 9933

Chelsea
2 Cale Street,
London SW3 3QU
+4420 7399 5010
lettingschelsea@eu.jll.com

Urban living, your way.

jll.co.uk/residential

© 2019 Jones Lang LaSalle IP, Inc. All rights reserved. All information contained herein is from sources deemed reliable; however, no representation or warranty is made to the accuracy thereof.

