



# Glasshouse Gardens, London E20

Asking price £470,000 Leasehold







## Description

This spacious one bedroom apartment is located on the 7th floor of Stratford City's most sought after developments, Glasshouse Gardens E20.

Property comprises of a spacious living room with space for dining, door leading to balcony with views overlooking The London Aquatics centre and the Olympic stadium. Modern fitted kitchen with integrated Bosch appliances and grey high gloss units. Large bedroom with grey high gloss built in wardrobes. Luxurious bathroom with mirrored cabinets, rainfall shower and bath.

This apartment is located in the popular Glasshouse Gardens development offering a 24 hour concierge service, secure cycle store and residents only gymnasium where you are a short walk from Stratford underground station and Westfield shopping centre.

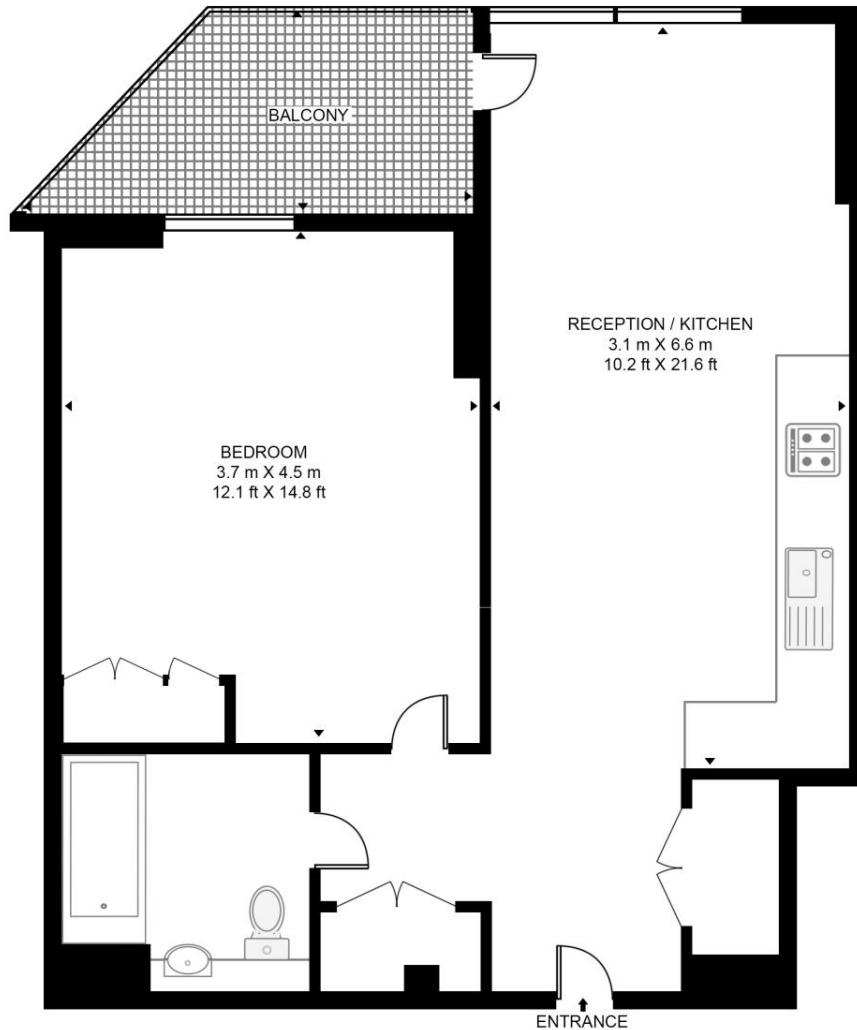
- Spacious One Bedroom Apartment
- Balcony
- Modern finish
- 7th floor
- Leasehold
- Residents' Gym
- 24 Hour Concierge
- Approx. 568 sq. ft (52.8 sq. m)
- 0.3 mile to Stratford Underground Station & Westfield Shopping Centre
- EPC: B

# Floorplan

568 sq ft | 53 sq m

## CASSIA POINT, GLASSHOUSE GARDENS

APPROXIMATE GROSS INTERNAL FLOOR AREA 568 SQ.FT (52.8 SQ.M)



SEVENTH FLOOR



This floor plan has been defined by the RICS Code of Measurement. This floor plan and all others are for approximate representative purposes only and upon usage is agreed to as such by the client.  
WWW: [hdvirtualart.com](http://hdvirtualart.com) | TEL: 0203.974.1567 | EMAIL: [info@hdvirtualart.com](mailto:info@hdvirtualart.com)

Stratford  
5 Station Street,  
London E15 1DA  
+4420 3147 1500  
[Lettingsstratford@eu.jll.com](mailto:Lettingsstratford@eu.jll.com)

*Urban living, your way.*

[jll.co.uk/residential](http://jll.co.uk/residential)

© 2019 Jones Lang LaSalle IP, Inc. All rights reserved. All information contained herein is from sources deemed reliable; however, no representation or warranty is made to the accuracy thereof.

