



Moscow Road, London W2

Guide price £6,995,000 Freehold







Description

A fantastic freehold building comprising 12 residential flats which are currently let out, sitting just moments from Hyde Park, Notting Hill Gate and Paddington Station. This working asset is a rare find on the London market and has not been seen available to purchase for over 40 years.

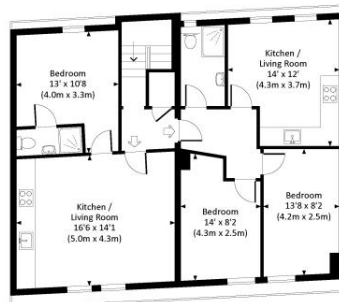
- Freehold block
- 12 Residential apartments
- Full Occupancy
- Bulk Sale only
- Multiple entrances
- Basement to fourth floor
- Quiet Street
- Near Hyde Park, Notting Hill Gate and Paddington
- Opportunity to increase building yield

Floorplan

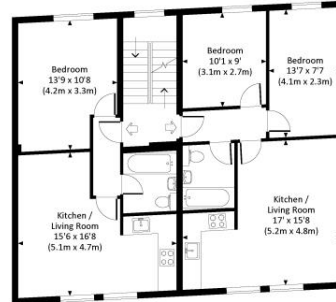
6,446 sq ft | 599 sq m

MOSCOW ROAD, W2

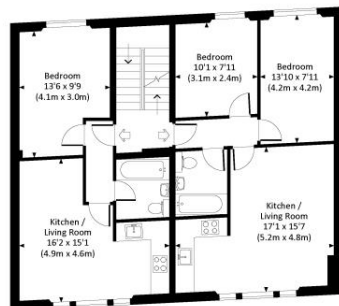
Approx. gross internal area
6446 Sq Ft. / 598.8 Sq M.



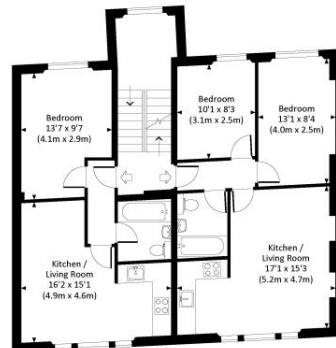
FOURTH FLOOR



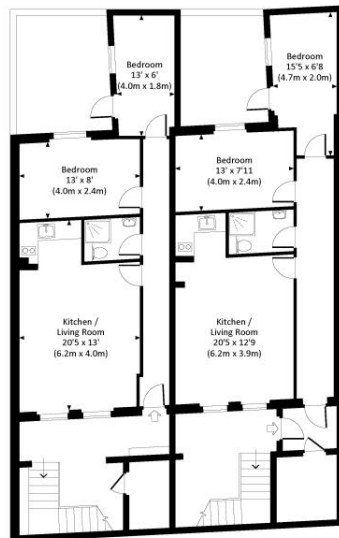
THIRD FLOOR



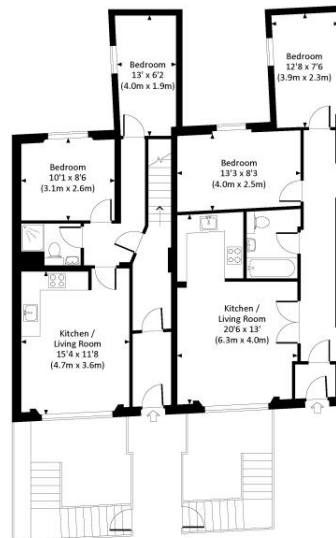
SECOND FLOOR



FIRST FLOOR



BASEMENT



GROUND FLOOR

All measurements are approximate and for guidance and illustrative purposes only.
Photography and Floor Plans by www.rayco.london - +44 7793 974 209

Kensington
387 Kensington High Street,
London W14 8QA
+4420 7087 5696
lettingskensington@eu.jll.com

Urban living, your way.

jll.co.uk/residential

© 2019 Jones Lang LaSalle IP, Inc. All rights reserved. All information contained herein is from sources deemed reliable; however, no representation or warranty is made to the accuracy thereof.

