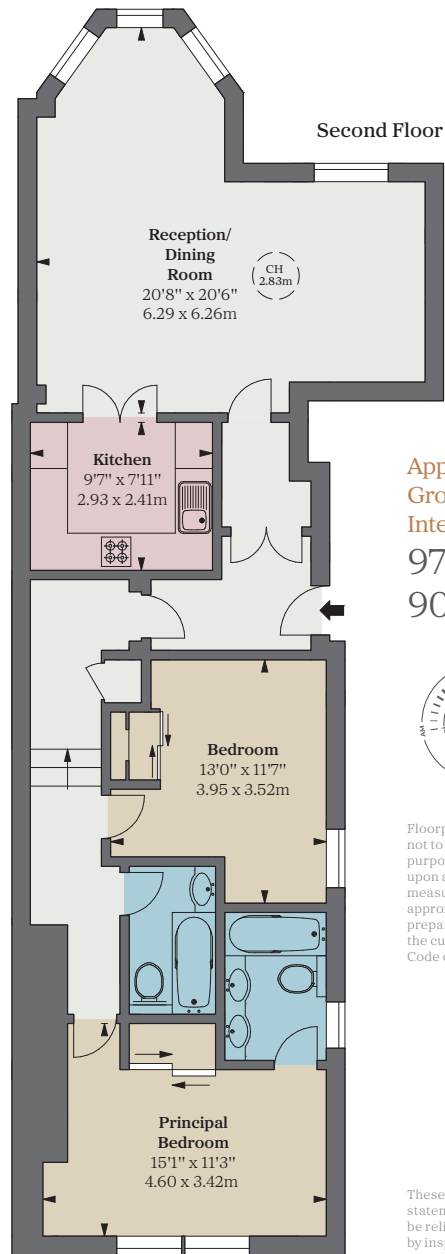




FLAT 7

10-12 Hans Crescent

KNIGHTSBRIDGE SW1X 0LJ



Approximate
Gross
Internal Area
973 sq ft
90.41 sq m



Floorplan for guidance only, not to scale or valuations purposes. It must not be relied upon as a statement of fact. All measurements and areas are approximate and have been prepared in accordance with the current edition of the RICS Code of Measuring Practice.



A charming flat with a bright south-westerly aspect over Hans Crescent. It lies on the second floor of a pair of handsome red bricked period buildings situated mid-terrace and a moments walk from Harrods.

Perfectly positioned in the heart of Knightsbridge and near to its tube station and Hyde Park.

Accommodation

- Entrance hall
- Two double bedrooms
- Two bathrooms (one en suite)

- Kitchen
- Reception room
- Lift
- Caretaker
- Independent gas central heating and hot water

Guide Price £2,200,000

Tenure Leasehold 978 years, expiring 29/09/3001

Service Charge £5,631.53 for 6 months to 28/09/2022

Ground Rent Peppercorn

Local Authority

The Royal Borough of Kensington & Chelsea

Council Tax
Band G

EPC Rating E

These particulars are for general information only and do not constitute any part of an offer or contract. All statements contained therein are made without responsibility on the part of the vendors or lessors and are not to be relied upon as statement or representation of fact. Intending purchasers or lessees must satisfy themselves, by inspection, or otherwise, as to the correctness of each of the statements or dimensions contained in these particulars. This floorplan is for guidance only and not for valuation purposes. 09/06/23 JLL-230531-03GG

JLL Knightsbridge
174 Brompton Road, London SW3 1HP
020 7306 1610

JLL Chelsea
2 Cale Street, London SW3 3QU
020 7399 5010

jll.co.uk/primecollection

