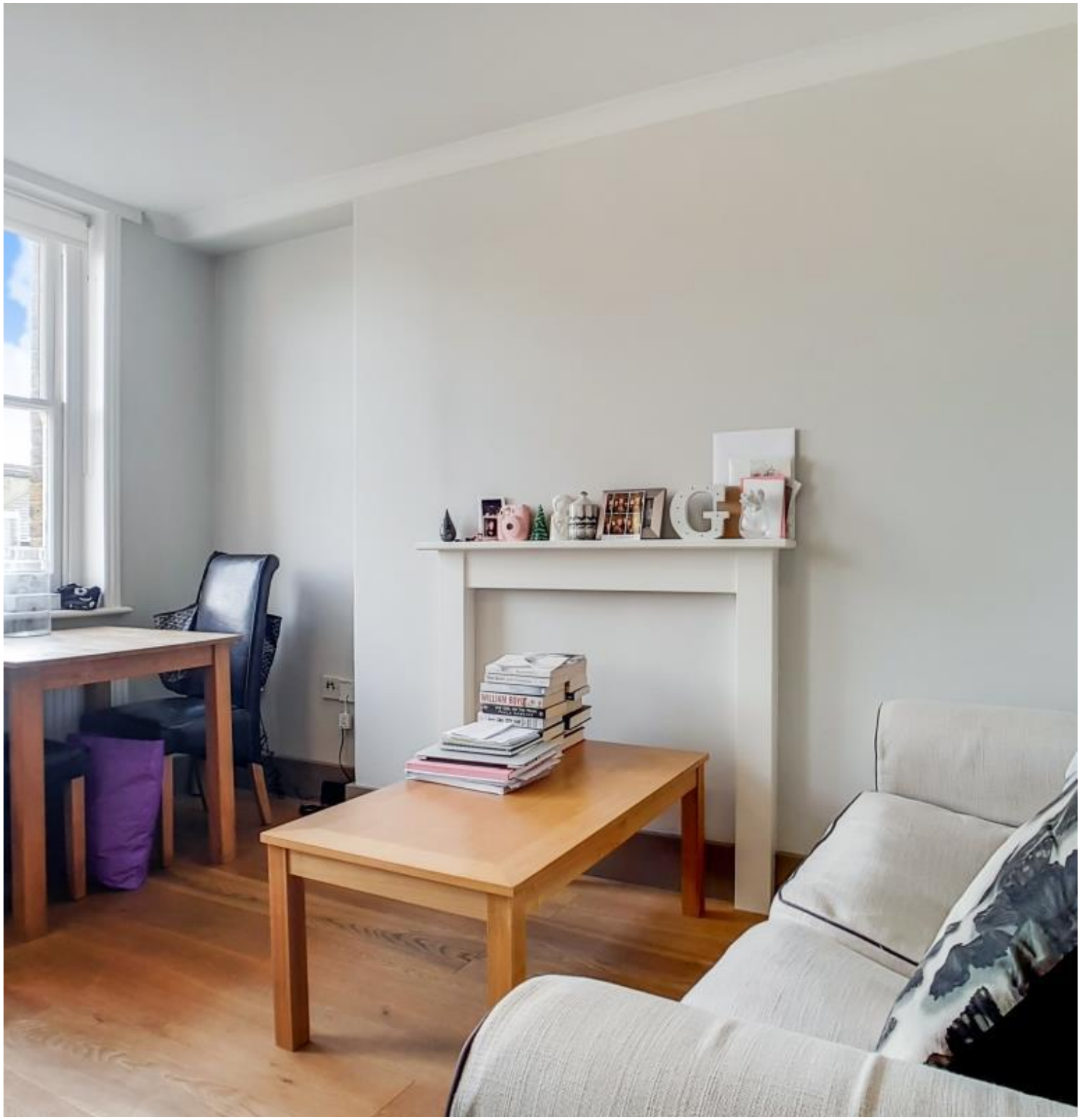




Cleveland Street, London W1T

Price £550 per week - Furnished







Description

The apartment comprises an open-plan reception room and kitchen, a large bedroom and a modern bathroom. It also has plenty of natural light and is offered furnished. The apartment is located in an excellent central location with restaurants and retailers only a stroll away.

The Cleveland Residences are ideally located in one of London's most central residential districts: Fitzrovia. Renowned for its impressive, classic London architecture, leafy squares and of course, its sophistication and charm.

As well as paying the rent, you may also be required to make some additional permitted payments. If your tenancy does not qualify as an AST, additional fees may apply. Please visit jll.co.uk/fees for details of fees which may be payable when renting a property.

- 1 double bedroom
- 1 bathroom
- 3rd floor
- Period Features
- Intercom Access
- Approx 383 Sq. ft
- 0.1 miles to Goodge Street Underground Station
- Long Leasehold
- EPC: C

Floorplan

383 sq ft | 36 sq m

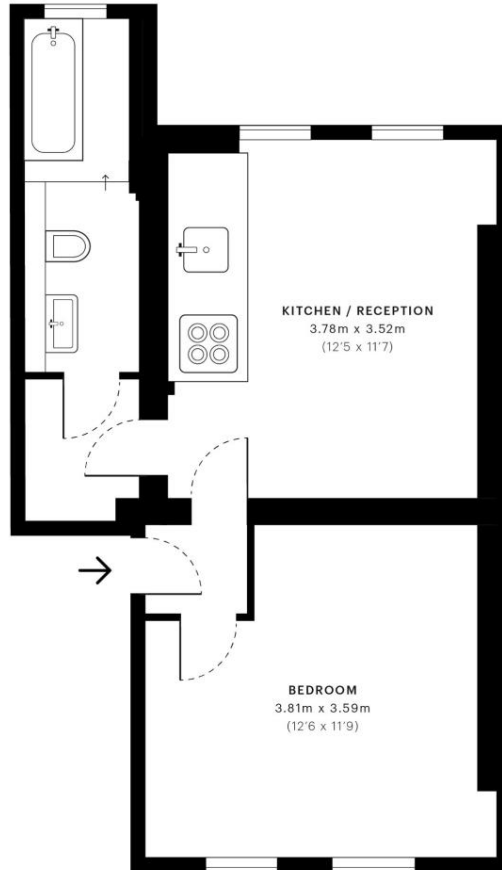


Cleveland Street, W1T

CAPTURE DATE
07/05/2019

LASER SCAN POINTS
12,743,076

GROSS INTERNAL AREA
35.6 Sqm / 383.2 Sqft



— Third Floor

 GROSS INTERNAL AREA
The footprint of the property
35.6 Sqm / 383.2 Sqft

 NET AREA (INTERNAL)
Excludes walls and external features
32.3 Sqm / 347.5 Sqft

 EXTERNAL STRUCTURAL FEATURES
Balconies, terraces, verandas etc.
0.0 Sqm / 0.0 Sqft

 RESTRICTED HEAD HEIGHT
Limited use area under 1.5m
0.0 Sqm / 0.0 Sqft



Spec floor plans are produced in accordance with the Royal Institution of Chartered Surveyors' Property Measurement Standards. Plots and gardens are illustrative only and are excluded from all area calculations. Due to rounding, numbers may not add up precisely.

IPMS 3B RESIDENTIAL
35.8 Sqm / 385.7 Sqft
IPMS 3C RESIDENTIAL
32.5 Sqm / 350.1 Sqft

SPEC ID
5cc96f79e585e60a17488ad0

Mayfair and Marylebone
13a St George Street,
London W1S 2FQ
+44 207 399 5550
tenancymanagement@eu.jll.c

Urban living, your way.

jll.co.uk/residential

© 2019 Jones Lang LaSalle IP, Inc. All rights reserved. All information contained herein is from sources deemed reliable; however, no representation or warranty is made to the accuracy thereof.

