



Wyndham Apartments, 60 River Gardens Walk, Greenwich, SE10 0TY



Wyndham Apartments, Greenwich, SE10 0TY Leasehold

A light and spacious riverside one bedroom apartment on the Banks of the River Thames and situated in the extremely desirable River Gardens which benefits from a luxury leisure complex and private residents garden.

Key Features

- 1 Bedroom
- 1 Bathroom
- 6th Floor modern apartment
- Balcony
- Stunning direct river views
- Secure underground parking
- 24 Hour concierge
- EPC: B

The accommodation comprises of open plan living with doors opening onto a balcony with far reaching river views. Modern and contemporary kitchen with integral appliances a large double bedroom and a modern bathroom.

Benefits from a luxury leisure complex that includes a heated indoor swimming pool, gym, tennis court, private residents garden and 24 hour concierge.

The River Gardens at Royal Greenwich is a vibrant new quarter stretching 300m along the banks of the Thames. Ideally positioned, adjacent to historic Greenwich Village and close to the world renowned O2 Arena, with panoramic views across the river to Canary Wharf, and the City of London.



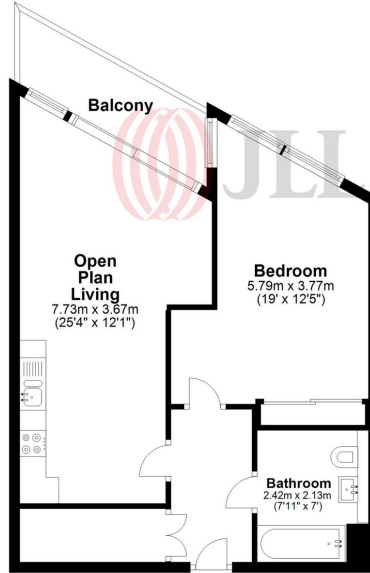






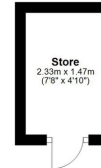
Sixth Floor

Approx. 51.6 sq. metres (555.5 sq. feet)



Basement

Approx. 3.4 sq. metres (36.9 sq. feet)



Total area: approx. 55.0 sq. metres (592.3 sq. feet)

Floor Plan measurements are approximate and are for illustrative purposes only. While we do not doubt the floor plans accuracy, we make no guarantee, warranty or representation as to the accuracy and completeness of the floor plan.
Plan produced using PlanUp.

22 College Approach,
Greenwich , SE10 9HY

Sales, Lettings & Property Management

Tel: 020 8858 9986

residential.jll.co.uk

