



**ARORA TOWER,
GREENWICH SE10**





A seventeenth floor, three double bedroom, two bathrooms apartment, located in this fantastic riverside development, Arora Tower at the O2 with direct River views over London. Residents will benefit from access to premier services provided by a neighbouring 5-star hotel, including pool and spa, gymnasium, restaurants and bars.

The accommodation comprises large entrance hall with built in storage, open plan reception room and fitted kitchen with access to a balcony with the most stunning river views. Three double bedrooms, master with en-suite shower room and a separate family bathroom.

The property is well located for great transport links together with parking and 24 hour concierge. The property comes with no onward chain.

Early viewings are highly recommended.

- 3 Double bedrooms
- 2 Bathrooms
- 17th Floor apartment
- Balcony
- Amazing views
- Parking
- On-site leisure facilities
- 24 Hour concierge
- Riverside development
- Close to North Greenwich Jubilee line
- EPC: B

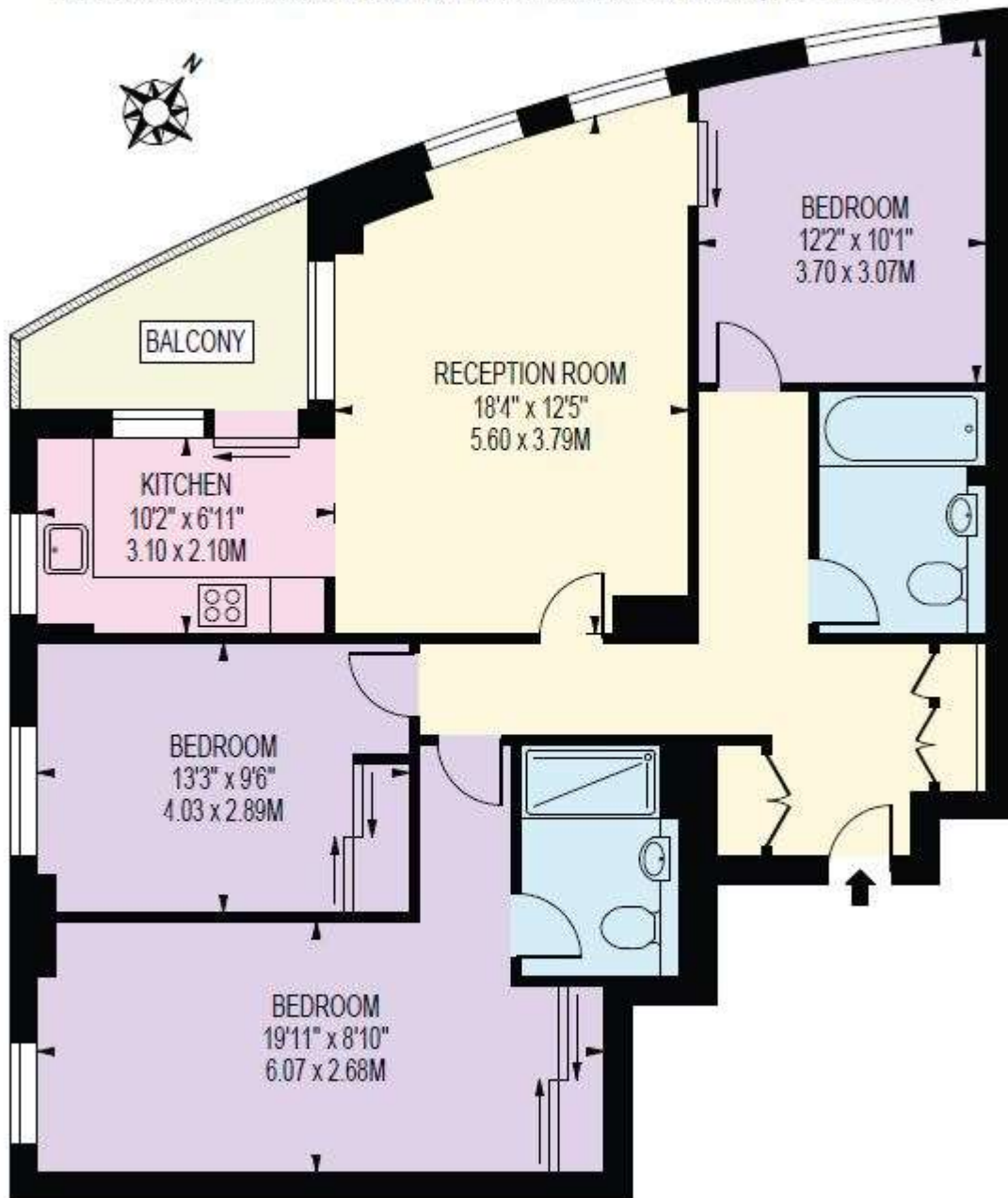
PRICE
£875,000

GROSS INTERNAL AREA
987 sq ft (91.71 sq m)

LOCAL AUTHORITY
Royal Borough of Greenwich

ARORA TOWER

APPROXIMATE GROSS INTERNAL FLOOR AREA: 987 SQ FT - 91.71 SQ M



SEVENTEENTH FLOOR

FOR ILLUSTRATION PURPOSES ONLY

THIS FLOOR PLAN SHOULD BE USED AS A GENERAL OUTLINE FOR GUIDANCE ONLY AND DOES NOT CONSTITUTE IN WHOLE OR IN PART AN OFFER OR CONTRACT. ANY INTENDING PURCHASER OR LESSEE SHOULD SATISFY THEMSELVES BY INSPECTION, SEARCHES, ENQUIRIES AND FULL SURVEY AS TO THE CORRECTNESS OF EACH STATEMENT. ANY AREAS, MEASUREMENTS OR DISTANCES QUOTED ARE APPROXIMATE AND SHOULD NOT BE USED TO VALUE A PROPERTY OR BE THE BASIS OF ANY SALE OR LET.

22 College Approach
Greenwich
London
SE10 9HY

These particulars are for general information only and do not constitute any part of an offer or contract. All statements contained therein are made without responsibility on the part of the vendors or lessors and are not to be relied upon as statement or representation of fact. Intending purchasers or lessees must satisfy themselves, by inspection, or otherwise, as to the correctness of each of the statements or dimensions contained in these particulars..