



Ennismore Gardens, London SW7

Price £850 per week - Furnished





Description

A charming second floor flat (with lift) in this well maintained building in Ennismore Gardens. The property consists of master bedroom with en suite bathroom, second double bedroom, shower room, reception room and a fully fitted kitchen. Ennismore Gardens is one of Knightsbridge's finest and most sought after garden Squares situated close to Hyde Park.

As well as paying the rent, you may also be required to make some additional permitted payments. If your tenancy does not qualify as an AST, additional fees may apply. Please visit jll.co.uk/fees for details of fees which may be payable when renting a property.



- Master bedroom with en suite bathroom
- Second double bedroom
- Shower room
- Reception room
- Modern kitchen
- Second floor
- Lift
- Furnished
- Approx. 667 sq ft (62 sq m)
- EPC: D

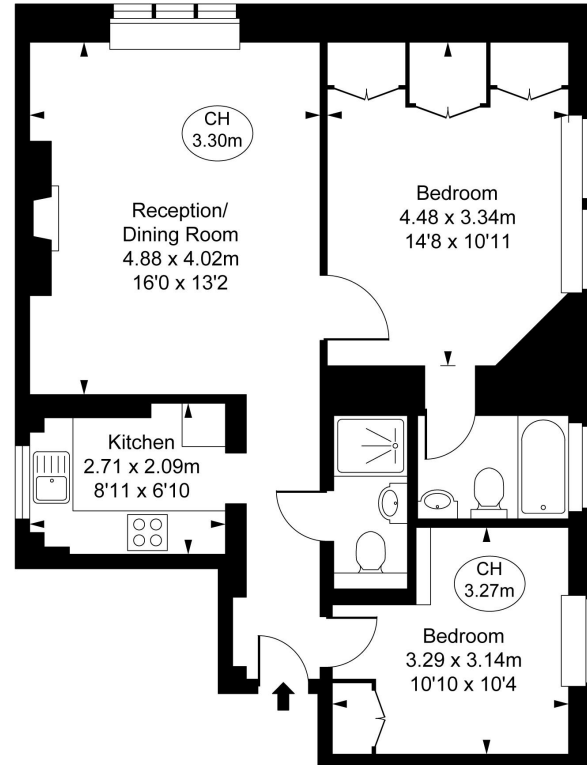
Floorplan

667 sq ft | 62 sq m

Ennismore Gardens, SW7

Approximate Gross Internal Area
65.43 sq m / 704 sq ft

(CH = Ceiling Heights)



Third Floor

This plan is not to scale. It is for guidance and not for valuation purposes.
All measurements and areas are approximate only, and have been prepared in accordance with the current edition of the RICS Code of Measuring Practice.
© Fulham Performance

Knightsbridge
Wood Wharf,
London E14 5GX
+4420 7306 1600
lettingsknightsbridge@eu.jll.co

Urban living, your way.

jll.co.uk/residential

© 2019 Jones Lang LaSalle IP, Inc. All rights reserved. All information contained herein is from sources deemed reliable; however, no representation or warranty is made to the accuracy thereof.

