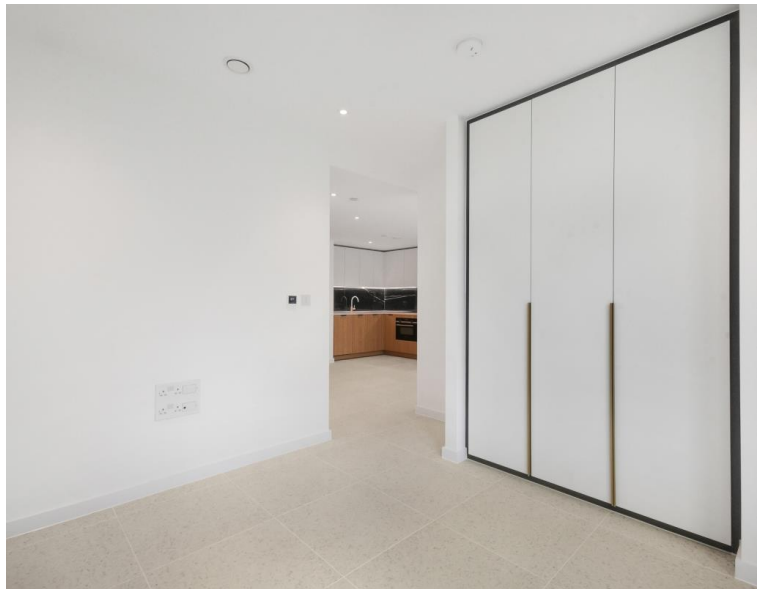
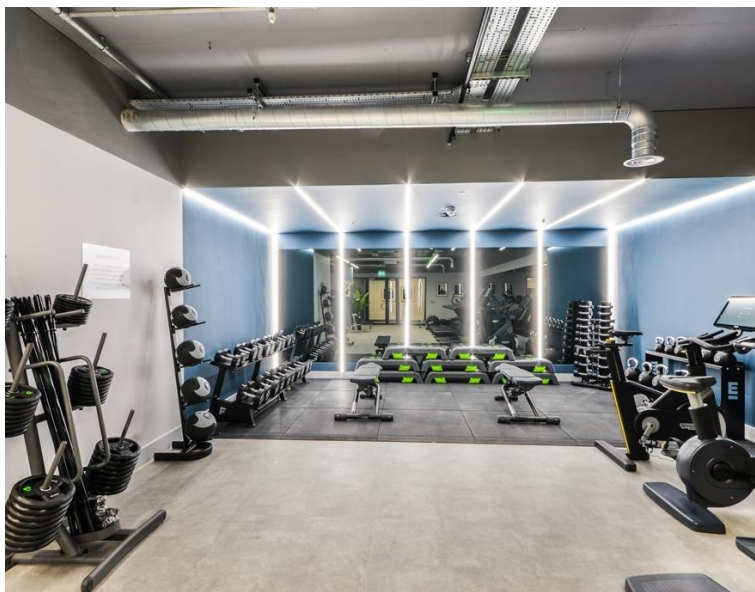




Cendal Crescent, London E1
Price £495 per week - Unfurnished







Description

JLL are delighted to present a brand new studio apartment in the final phase of Silk District, E1, conveniently located for access to the City of London.

Offering great living space and boasting 477sq ft. Offered unfurnished, the apartment will comprise an open plan living room and integrated kitchen, partitioned sleeping area with large fitted wardrobes, bathrooms with porcelain finish, tiled flooring throughout good storage space.

The Silk District is a brand new development from Mount Anvil and offers residents fantastic amenities which include 24 hour concierge, on site gym, cinema room, rooftop gardens and resident's lounge. The development is within easy reach of the City of London and in the heart of the Whitechapel regeneration area, approximately 0.3 miles from Whitechapel Underground / Crossrail station.

As well as paying the rent, you may also be required to make some additional permitted payments. If your tenancy does not qualify as an AST, additional fees may apply. Please visit jll.co.uk/fees for details of fees which may be payable when renting a property.

- Studio
- 1 Bathroom
- 24 Hour concierge
- On-site amenities including gym, cinema
- Approx. 474 sq ft (44 sq m)
- Residents rooftop garden and lounge
- 0.3 miles from Whitechapel underground
- Unfurnished
- EPC: B

Floorplan

474 sq ft | 44 sq m

City
25 Walbrook The Walbrook
Building,
London EC4N 8AF
+4420 7337 4000

Urban living, your way.

jll.co.uk/residential

© 2019 Jones Lang LaSalle IP, Inc. All rights reserved. All information contained herein is from sources deemed reliable; however, no representation or warranty is made to the accuracy thereof.

