



Buckingham Gate, London SW1E

Price £1,900 per week - Furnished





Description

A beautifully presented thirteenth floor apartment which has been interior designed throughout by TH2 Designs with spectacular north westerly views of London. Accommodation comprises of three double bedrooms, two ensuite shower rooms, one guest bathroom, Fully fitted kitchen with seating area adjoining a stylishly decorated reception. Fittings throughout include wood floors and marble back drops with floor to ceiling glass windows providing natural light and city views. Underground parking is available by separate negotiation.

Please note that due to building works in the area, the skyline views from the apartments may have changed from those shown in the marketing pictures.

As well as paying the rent, you may also be required to make some additional permitted payments. If your tenancy does not qualify as an AST, additional fees may apply. Please visit jll.co.uk/fees for details of fees which may be payable when renting a property.

- Master bedroom with en suite shower room
- 2 Double bedrooms
- 1 Further shower room
- Reception room
- Open plan kitchen
- Thirteenth floor
- Lift
- 24 hour concierge
- Underground parking by separate negotiation
- Furnished



Floorplan

sq ft | sq m

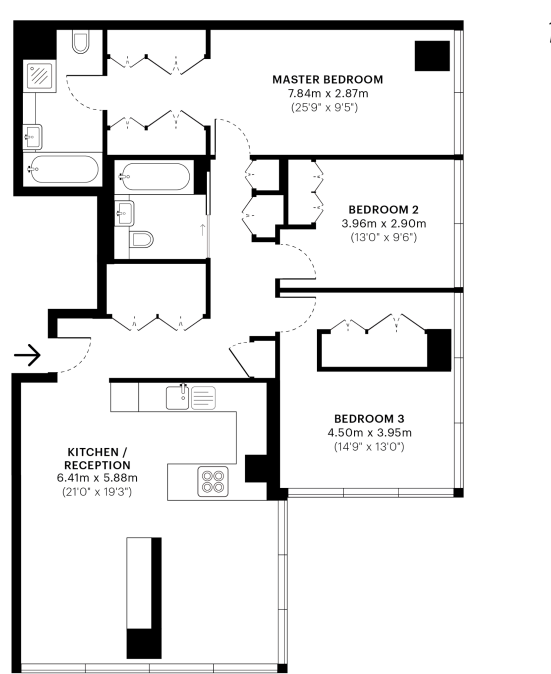


The Tower, Buckingham Green, SW1E

GROSS INTERNAL AREA
117.5 Sqm / 1264.7 Sqft

CAPTURE DATE
10/07/2019

LASER SCAN POINTS
35,301,706



— Thirteenth Floor

GROSS INTERNAL AREA
The footprint of the property
117.5 Sqm / 1264.7 Sqft

NET AREA (INTERNAL)
Excludes walls and external features
111.1 Sqm / 1195.5 Sqft

EXTERNAL STRUCTURAL FEATURES
Balconies, terraces, verandas etc.
0.0 Sqm / 0.0 Sqft

RESTRICTED HEAD HEIGHT
Limited use area under 1.5m
0.0 Sqm / 0.0 Sqft



Spec floor plans are produced in accordance with the Royal Institution of Chartered Surveyors' Property Measurement Standards. Plots and gardens are illustrative only and are excluded from all area calculations. Due to rounding, numbers may not add up precisely.



IPMS 3B RESIDENTIAL
123.1 Sqm / 1324.6 Sqft
IPMS 3C RESIDENTIAL
116.6 Sqm / 1255.4 Sqft

SPEC ID
5d23449c28d6380a335a42af

Knightsbridge
174 Brompton Road,
London SW3 1HP
+4420 7306 1600
lettingsknightsbridge@eu.jll.co

Urban living, your way.

jll.co.uk/residential

© 2019 Jones Lang LaSalle IP, Inc. All rights reserved. All information contained herein is from sources deemed reliable; however, no representation or warranty is made to the accuracy thereof.

