



## Elvaston Place, London SW7

Price £850 per week - Furnished









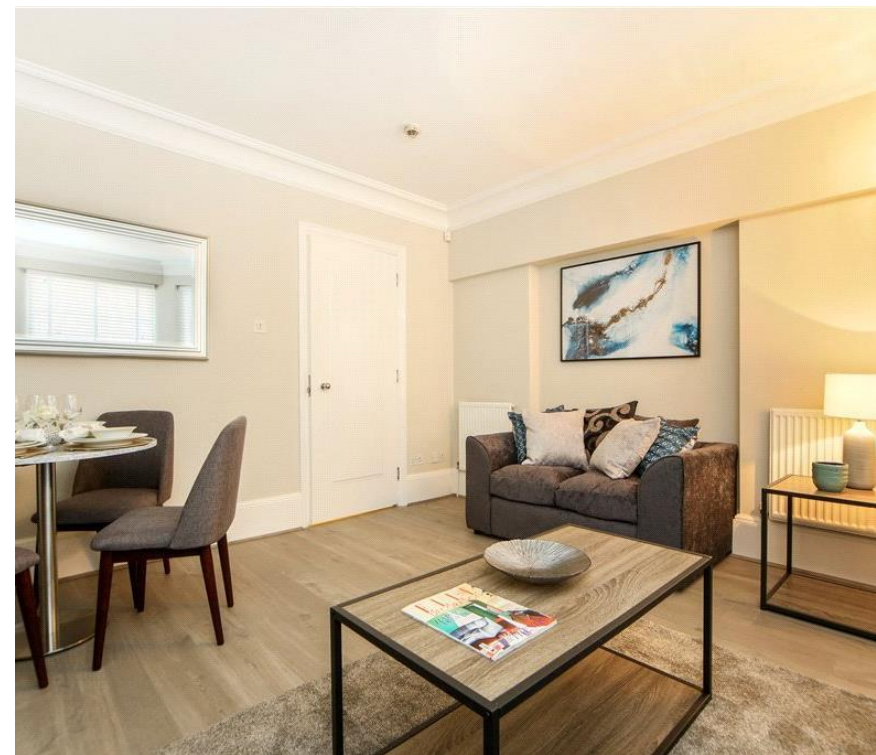
# Description

A spacious and bright lower ground floor flat in this popular road in the heart of South Kensington. The property consists of master bedroom with dressing room and en suite bathroom, second double bedroom, one further bathroom, reception room and a fully fitted kitchen. The flat is presented in excellent order and it also benefits from a patio garden.

Elvaston Place is ideally located for Gloucester Road and its many shops & restaurants and is within easy walking distance of Gloucester Road station.

As well as paying the rent, you may also be required to make some additional permitted payments. If your tenancy does not qualify as an AST, additional fees may apply. Please visit [jll.co.uk/fees](http://jll.co.uk/fees) for details of fees which may be payable when renting a property.

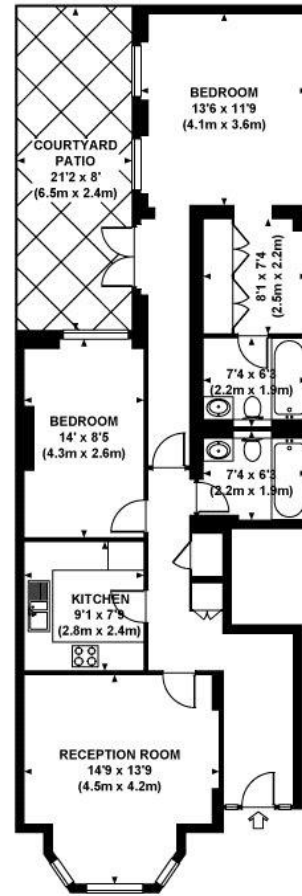
- 2 Double bedrooms
- 2 Bathrooms (1 en suite)
- Reception room
- Fully fitted kitchen
- Lower ground floor
- Patio garden
- Approx. 918 sq ft (85 sq m)
- Furnished
- EPC: C



# Floorplan

918 sq ft | 85 sq m

Approx. gross internal area  
918 Sq Ft. / 85.4 Sq M.



LOWER GROUND FLOOR



All measurements are approximate and for illustration purposes only as defined by the RICS Code of Measuring Practice © 2012  
Dorling Jones Design www.dorlingjones.com 020 7510 0033

Knightsbridge  
Wood Wharf,  
London E14 5GX  
+4420 7306 1600  
lettingsknightsbridge@eu.jll.co

*Urban living, your way.*

[jll.co.uk/residential](http://jll.co.uk/residential)

© 2019 Jones Lang LaSalle IP, Inc. All rights reserved. All information contained herein is from sources deemed reliable; however, no representation or warranty is made to the accuracy thereof.

