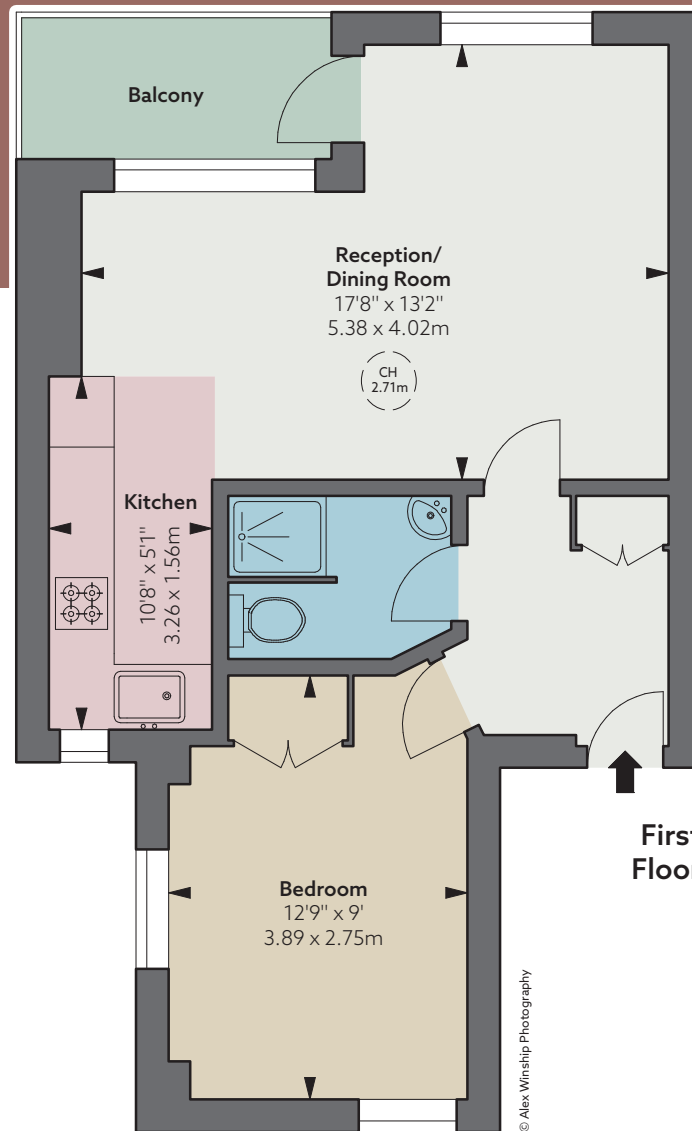




WINDSOR COURT | CHELSEA SW3 3TB



A charming one bedroomed flat on the first floor of this well-known 1930's block of flats, serviced by a resident caretaker who lives in its "sister" block opposite. It has a quaint east-facing balcony accessed off the reception room.

Windsor Court is positioned on the corner of Jubilee Place and Chelsea Green which has recently been re-landscaped to include new planting and a fountain.

**Accommodation**

- Entrance hall
- Bedroom
- Bathroom
- Kitchen

- Reception room
- Balcony
- Lift
- Caretaker
- Communal central heating and hot water

**Guide Price** £750,000

**Tenure** Leasehold of approximately 125 years

**Ground Rent** Peppercorn

**EPC Rating** C

**Service Charge** 4.35% of outgoings, £3,381 for 1/2 year to 28/09/23 (including reserve fund)

**Council Tax Band** E

**Local Authority** The Royal Borough of Kensington & Chelsea

**Approximate Gross Internal Area**  
440 sq ft / 40.88 sq m



THE BROCHURY  
ALEX  
WINSHIP

Floorplan for guidance only, not to scale or valuations purposes. It must not be relied upon as a statement of fact. All measurements and areas are approximate and have been prepared in accordance with the current edition of the RICS Code of Measuring Practice.

These particulars are for general information only and do not constitute any part of an offer or contract. All statements contained therein are made without responsibility on the part of the vendors or lessors and are not to be relied upon as statement or representation of fact. Intending purchasers or lessees must satisfy themselves, by inspection, or otherwise, as to the correctness of each of the statements or dimensions contained in these particulars. This floorplan is for guidance only and not for valuation purposes. 13/09/23 JLL-230610-05MS

Savills Knightsbridge  
knightsbridge\_sales@savills.com  
020 7581 5234

Savills Chelsea  
chelsea@savills.com  
020 7578 9000  
savills.co.uk



JLL Knightsbridge  
knightsbridge@eu.jll.com | 020 7306 1600  
JLL Chelsea  
chelsea@eu.jll.com | 020 7399 5010  
jll.co.uk/residential