



Rathbone Place, London W1T

Price £1,800 per week - Furnished







Description

The apartment is set on the 2nd floor and measures over 106sqm / 1,145sqft. comprising a master bedroom with en-suite bathroom, second double bedroom, a shower room, reception room and a fully fitted, open plan kitchen and balcony. The apartment has wooden flooring throughout the communal areas and carpet in the bedrooms for comfort.

Residents will benefit from access to a 24 hour concierge, gym, swimming pool, sauna and steam room, cinema room, beautiful gardens, residents' lounge, wine storage and tasting room.

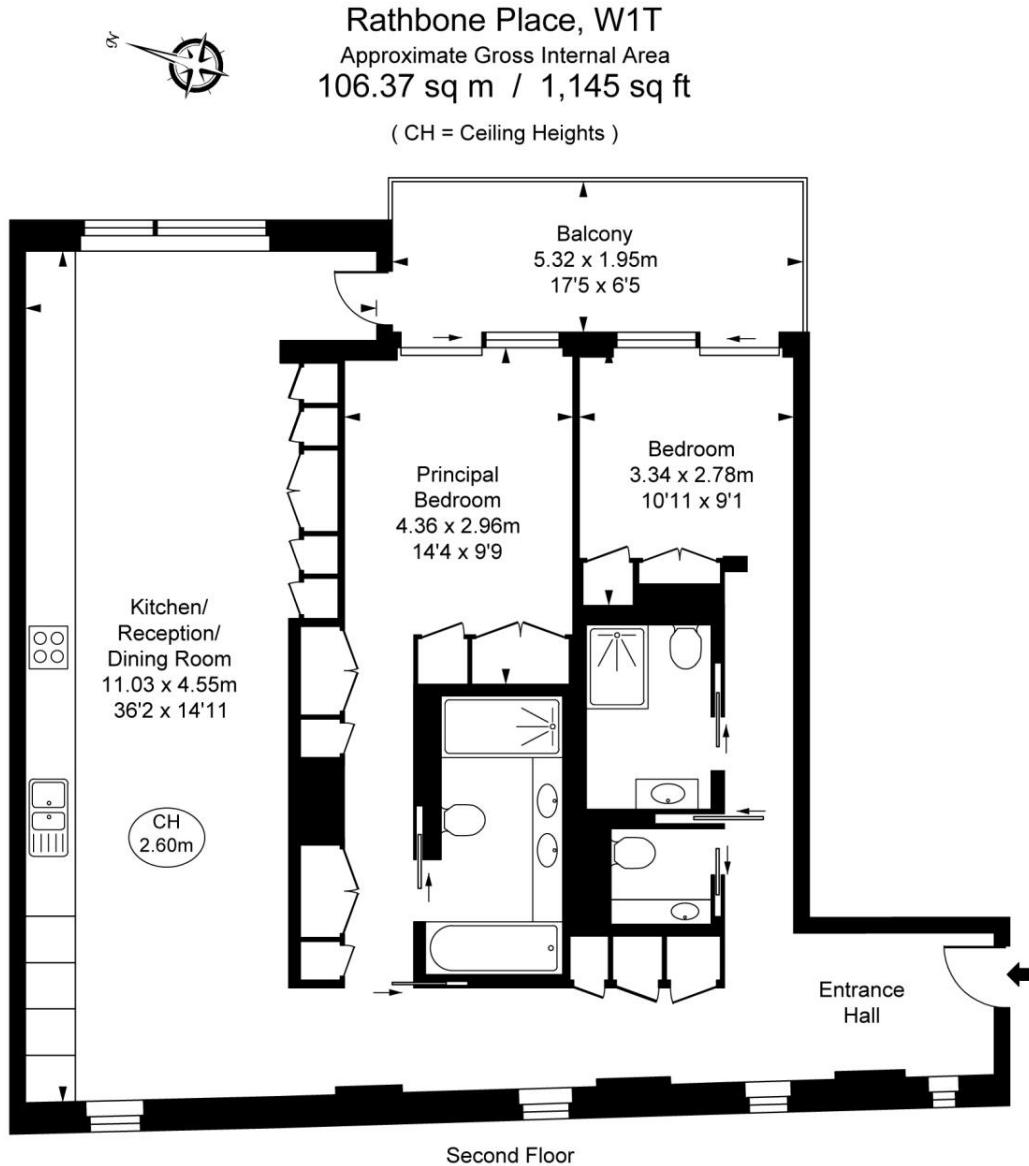
Rathbone Square has been designed to offer a tranquil environment, whilst being ideally located moments from Oxford Street. Situated in the heart of London's West End, ideal for transport links in and around London, with The City and West London being just 10 minutes away via the underground.

As well as paying the rent, you may also be required to make some additional permitted payments. If your tenancy does not qualify as an AST, additional fees may apply. Please visit jll.co.uk/fees for details of fees which may be payable when renting a property.

- Stunning Apartment
- Measures over 106sqm / 1,145sqft
- Open-Plan Living
- Wooden Flooring
- Furnished
- 24hr Concierge
- Gym
- Swimming Pool
- Sauna and Steam Room
- Cinema Room

Floorplan

1,145 sq ft | 106 sq m



This plan is not to scale. It is for guidance and not for valuation purposes.
All measurements and areas are approximate only, and have been prepared in accordance with the current edition of the RICS Code of Measuring Practice.
© Fulham Performance

Mayfair and Marylebone
13a St George Street,
London W1S 2FQ
+44 207 399 5550
tenancymanagement@eu.jll.c

Urban living, your way.

jll.co.uk/residential

© 2019 Jones Lang LaSalle IP, Inc. All rights reserved. All information contained herein is from sources deemed reliable; however, no representation or warranty is made to the accuracy thereof.

