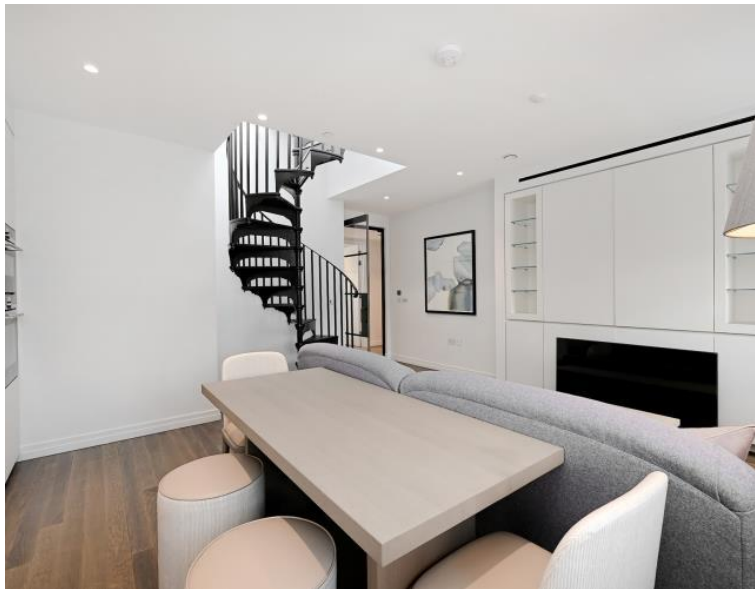




Little Portland Street, London W1W

Price £1,400 per week - Furnished







Description

A stunning top floor apartment (with lift) in the highly anticipated Morley House, developed by the Crown Estate and interior designed by TH2 Designs. The apartment consists of two double bedrooms, master bedroom with en-suite, further bathroom and reception room with open plan kitchen.

Morley House consists of 44 luxury apartments, complete with access to a cinema room, residents lounge, bicycle storage and 24 hour concierge service and is located in the heart of the West End, perfectly situated for the finest dining and retail experiences London has to offer.

As well as paying the rent, you may also be required to make some additional permitted payments. If your tenancy does not qualify as an AST, additional fees may apply. Please visit jll.co.uk/fees for details of fees which may be payable when renting a property.

- Open-Plan Living Space
- 24hr Concierge
- Penthouse
- Two Double Bedrooms
- Two Bathrooms
- Residents Lounge & Cinema room
- Car Club Membership
- Residents App

Floorplan

sq ft | sq m

Mayfair and Marylebone
13a St George Street,
London W1S 2FQ
+44 207 399 5550
tenancymanagement@eu.jll.c

Urban living, your way.

jll.co.uk/residential

© 2019 Jones Lang LaSalle IP, Inc. All rights reserved. All information contained herein is from sources deemed reliable; however, no representation or warranty is made to the accuracy thereof.

