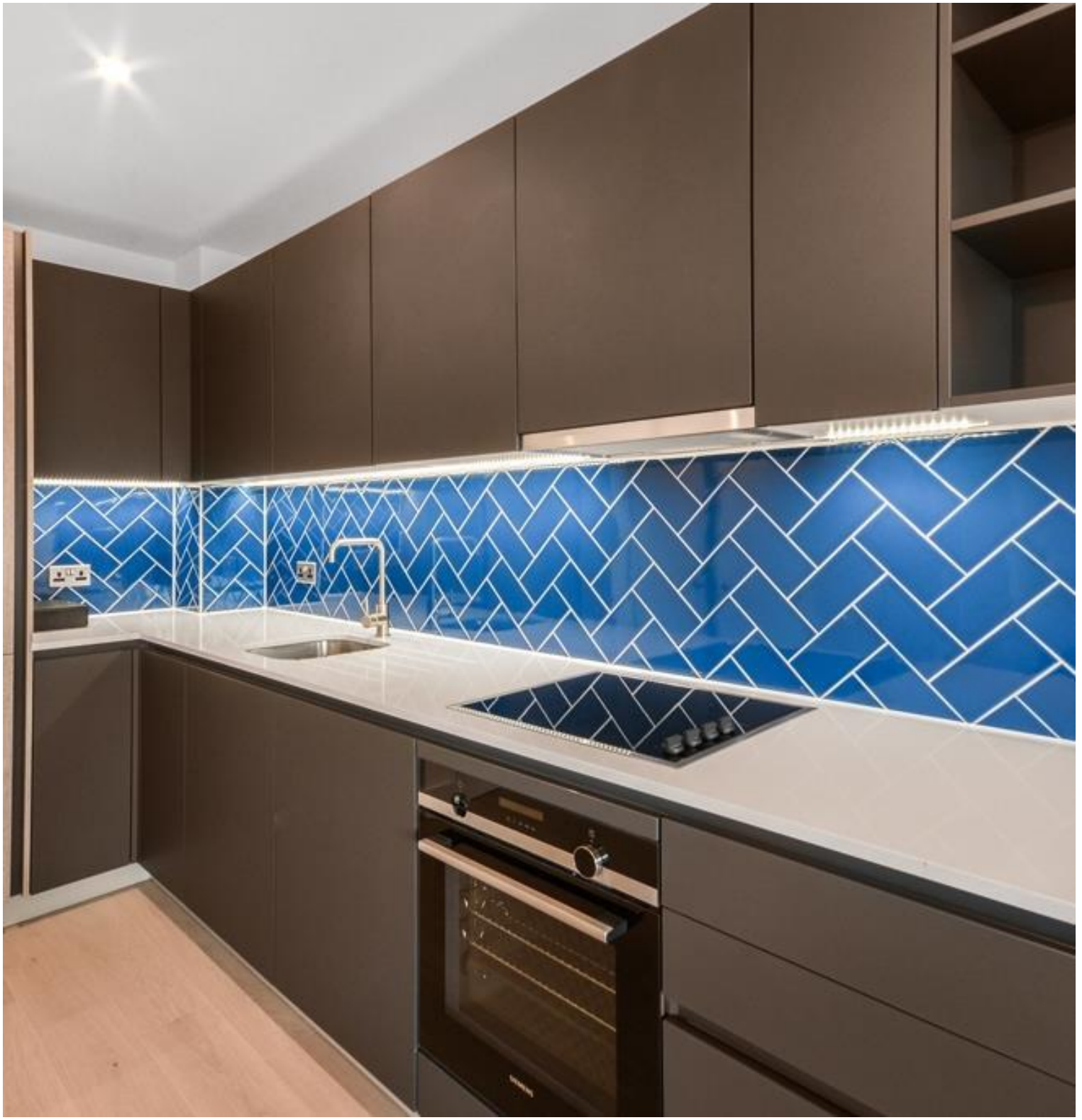


Gorsuch Place, London E2

Price £625 per week - Furnished







Description

A stunning 1 bedroom apartment situated in Cassia Building, Shoreditch Exchange, E2. The development boasts 24 hour concierge, on site gym, cinema and resident's lounge.

This 1 bedroom apartment is situated on the 3rd floor and comprises a double bedroom with fitted wardrobes, spacious open plan living area with private balcony, views towards the City of London, fully fitted kitchen with integrated Siemens appliances, contemporary bathroom, wood flooring and excellent storage space.

Shoreditch Exchange is well situated for the City of London, and is in the heart of the ever popular and vibrant Shoreditch. The development is moments from Hoxton station (0.1 mile), well situated for the City of London and in the heart of Shoreditch. Other benefits include 24 hour concierge, on site gymnasium and private cinema, along with a rooftop terrace.

As well as paying the rent, you may also be required to make some additional permitted payments. If your tenancy does not qualify as an AST, additional fees may apply. Please visit jll.co.uk/fees for details of fees which may be payable when renting a property.

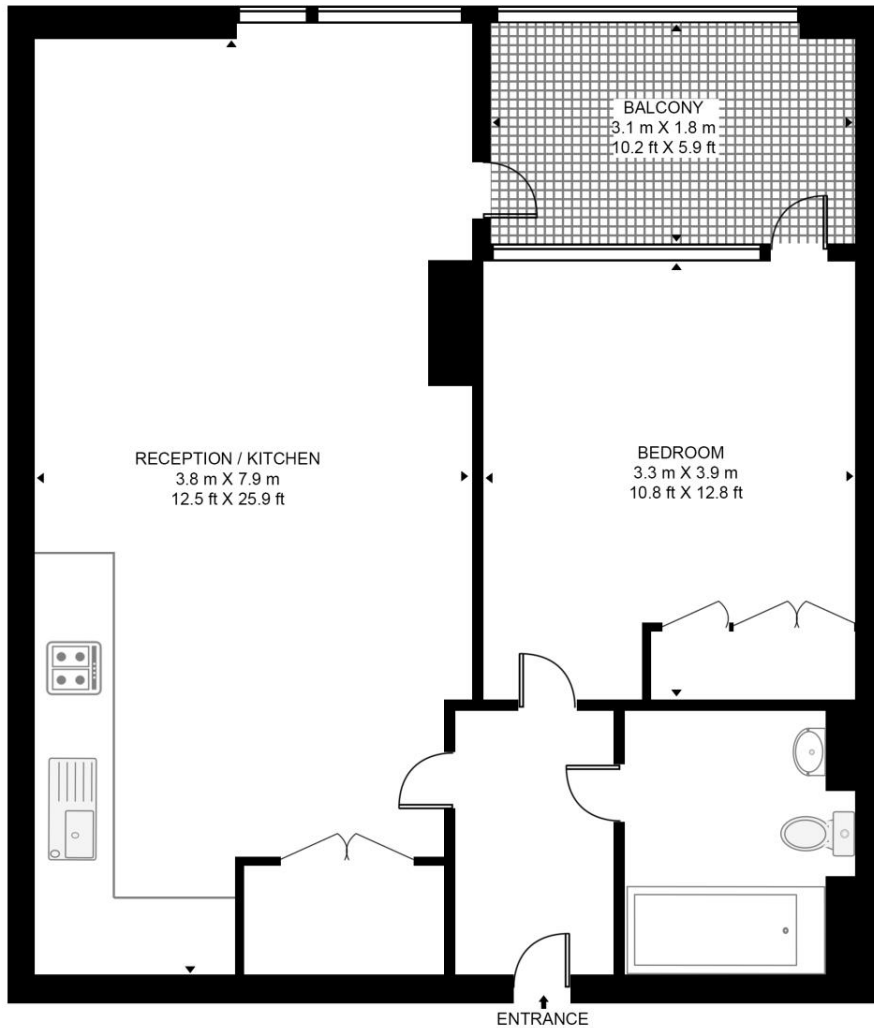
- 1 Bedroom
- 1 Bathroom
- 3rd Floor
- Balcony
- 24 hour concierge
- On-site leisure facilities including gym, cinema and roof-terrace
- 0.1 miles from Hoxton Station
- Approx. 548 sq ft (50.9 sq m)
- Furnished
- EPC: B

Floorplan

548 sq ft | 51 sq m

ROSEWOOD BUILDING, GORSUCH PLACE

APPROXIMATE GROSS INTERNAL FLOOR AREA 548 SQ.FT (50.9 SQ.M)



THIRD FLOOR

HDVA

This floor plan has been defined by the RICS Code of Measurement. This floor plan and all others are for approximate representative purposes only and upon usage is agreed to as such by the client.

WWW: hdvirtualart.com | TEL: 0203.974.1567 | EMAIL: info@hdvirtualart.com

City
25 Walbrook The Walbrook
Building,
London EC4N 8AF
+4420 7337 4000

Urban living, your way.

jll.co.uk/residential

© 2019 Jones Lang LaSalle IP, Inc. All rights reserved. All information contained herein is from sources deemed reliable; however, no representation or warranty is made to the accuracy thereof.

