



Draycott Place, London SW3

Price £525 per week - Furnished





Description

A well presented lower ground floor flat in this period building in the heart of Chelsea. The property consists of one double bedroom, one bathroom, reception room and a fully fitted kitchen. The flat benefits from wooden flooring in the reception room and a charming patio. Draycott Place is close to all the amenities with plenty of shops, bars and restaurants within walking distance.

As well as paying the rent, you may also be required to make some additional permitted payments. If your tenancy does not qualify as an AST, additional fees may apply. Please visit jll.co.uk/fees for details of fees which may be payable when renting a property.

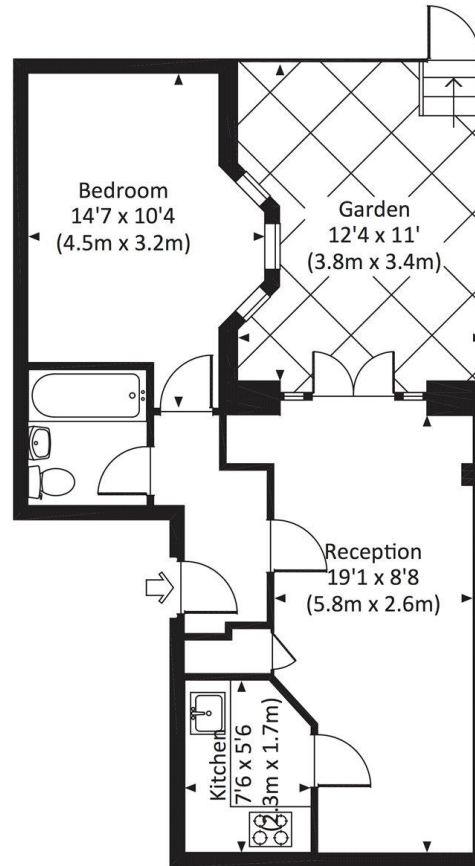
- Furnished flat
- 1 Double bedroom
- 1 Bathroom
- Reception room
- Fully fitted kitchen
- Patio garden
- Lower ground floor
- Approx. 406 sq ft (37 sq m)
- EPC: D



Floorplan

406 sq ft | 38 sq m

Approx. gross internal area
406 Sq Ft. / 37.7 Sq M.



LOWER GROUND FLOOR

dpd All measurements have been made in accordance with RICS Code of Measuring Practice which are approximate only and only for illustrative purposes. For the avoidance of doubt, Dowling Jones Design shall not be liable for any reliance on these measurements. © 2015 www.dowlingjones.com 020 7610 9933

Chelsea
2 Cale Street,
London SW3 3QU
+4420 7399 5010
lettingschelsea@eu.jll.com

Urban living, your way.

jll.co.uk/residential

© 2019 Jones Lang LaSalle IP, Inc. All rights reserved. All information contained herein is from sources deemed reliable; however, no representation or warranty is made to the accuracy thereof.

