

# Avantgarde Place, London E1

Price £815 per week - Furnished







## Description

A stunning 2 bedroom apartment in the sought after Avantgarde Tower.

Offering approximately 872 sq ft of living space, this luxury apartment is situated on the 9th floor and offers 2 double bedrooms with fitted wardrobes, two contemporary Roca bathrooms with en-suite to master bedroom, reception with access to a large 204 sq ft terrace with stunning South Eastern views of the City skyline and towards Canary Wharf, fully fitted kitchen with Siemens appliances and wood flooring.

This luxury development has a high specification to include comfort cooling, resident's lounge, on site leisure facilities and 24 hour concierge. Based in the stylish hub of Shoreditch, the development is located in Zone 1, with local transport links such as Shoreditch High Street, Old Street and Aldgate.

We understand that cooling / heating is delivered via a communal system for which separate charges apply.

As well as paying the rent, you may also be required to make some additional permitted payments. If your tenancy does not qualify as an AST, additional fees may apply. Please visit [jll.co.uk/fees](http://jll.co.uk/fees) for details of fees which may be payable when ren

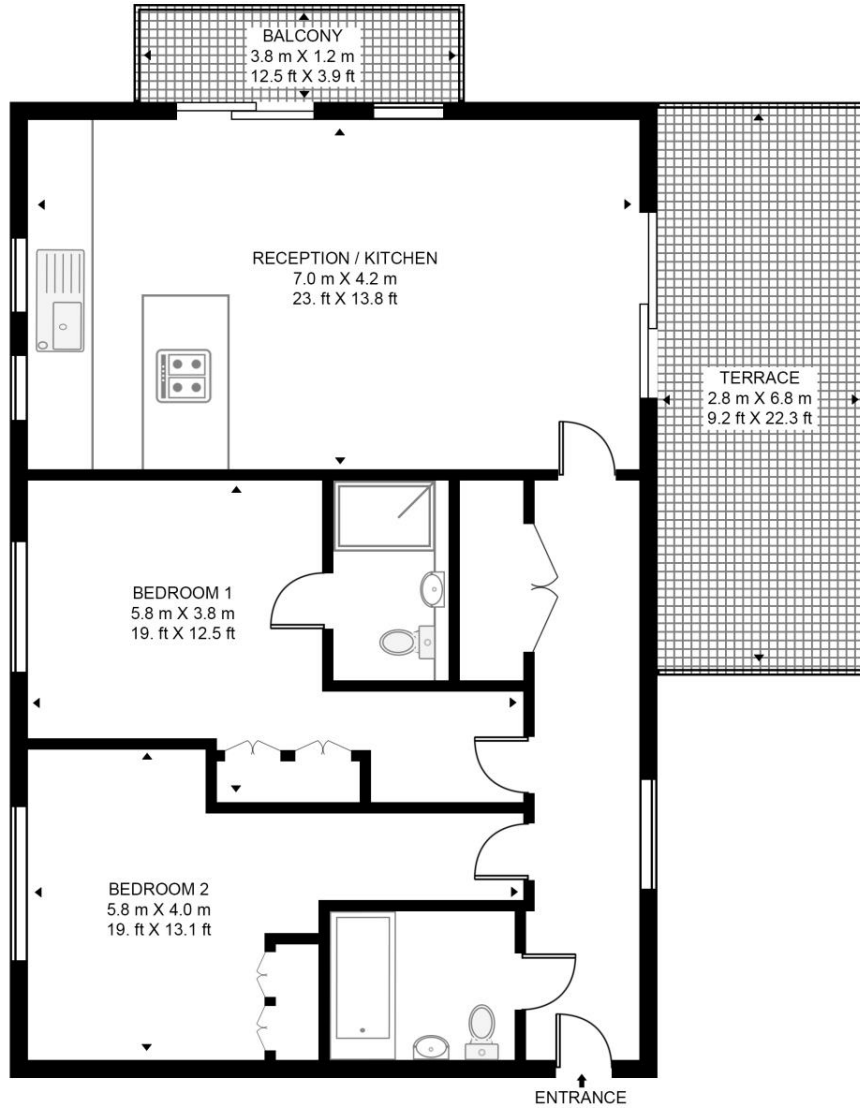
- 2 Bedrooms
- 2 Bathrooms
- Open plan kitchen
- On site leisure facilities
- 24 Hour concierge
- 0.1 mile from Shoreditch High Street station
- Approx. 872 sq ft (81 sq m)
- Furnished
- EPC: B
- Council Tax Band: D

# Floorplan

872 sq ft | 81 sq m

## AXIS APARTMENT, AVANTGARDE PLACE

APPROXIMATE GROSS INTERNAL FLOOR AREA 859 SQ.FT (79.8 SQ.M)



NINTH FLOOR



This floor plan has been defined by the RICS Code of Measurement. This floor plan and all others are for approximate representative purposes only and upon usage is agreed to as such by the client.  
WWW: [hdvirtualart.com](http://hdvirtualart.com) | TEL: 0203.974.1567 | EMAIL: [info@hdvirtualart.com](mailto:info@hdvirtualart.com)

City  
25 Walbrook The Walbrook  
Building,  
London EC4N 8AF  
+4420 7337 4000

*Urban living, your way.*

[jll.co.uk/residential](http://jll.co.uk/residential)

© 2019 Jones Lang LaSalle IP, Inc. All rights reserved. All information contained herein is from sources deemed reliable; however, no representation or warranty is made to the accuracy thereof.

