



Lennox Gardens, London SW1X

Price £2,500 per week - Furnished





Description

A beautifully presented fourth floor penthouse apartment, benefitting from direct lift access and situated in one of Knightsbridge's most popular garden squares.

The property comprises two double bedrooms, two bathrooms, reception room and modern kitchen. The apartment has been interior designed throughout with comfort cooling and is finished to the highest of standards, making it an ideal luxury home in one of London's most exclusive areas.

As well as paying the rent, you may also be required to make some additional permitted payments. If your tenancy does not qualify as an AST, additional fees may apply. Please visit jll.co.uk/fees for details of fees which may be payable when renting a property.

- Stunning penthouse apartment
- 2 Double bedrooms
- 2 Bathrooms
- Reception room
- Modern kitchen
- Fourth floor
- Direct lift access
- Comfort cooling
- Interior designed throughout
- 1325 Sq Ft / 123.1 Sq Ft

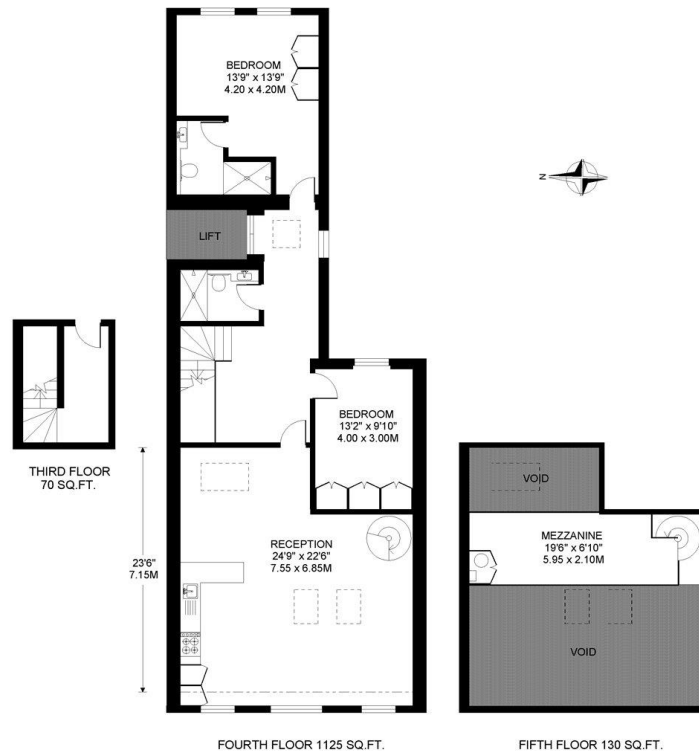


Floorplan

1,325 sq ft | 123 sq m

LENNOX GARDENS, CHELSEA, LONDON SW1

TOTAL AREAS SHOWN ON PLAN
1325 SQ.FT. / 123.1 SQ.M.



COPYRIGHT: Floorplan produced for "Henry & James Estate Agents Ltd." by floorplanners.co.uk
This plan is not to a given scale, and is for guidance only, and must not be relied upon as a statement of fact.
All measurements are maximum, and include window bays, and wardrobes where applicable.
This plan has been prepared in accordance with the "RICS" Code of Measuring Practice.
Where a room has a sloping ceiling, the dotted line indicates height at 1.5m, and measurements are shown at floor level.

Knightsbridge
174 Brompton Road,
London SW3 1HP
+4420 7306 1600
lettingsknightsbridge@eu.jll.co

Urban living, your way.

jll.co.uk/residential

© 2019 Jones Lang LaSalle IP, Inc. All rights reserved. All information contained herein is from sources deemed reliable; however, no representation or warranty is made to the accuracy thereof.

