

Barley Lane, London E15

Asking price £675,000 Leasehold







Description

Exclusive to the market becomes available this one of a kind 2 double bedroom 2 bathroom apartment spanning 1016 sq. ft, situated on the 5th floor of the ultra modern and popular Stratford Mill development.

Since purchasing, the current vendor has tastefully upgraded a variety of areas including the electrical finishes, a kitchen island you will not find in any other apartment, built in storage units/media unit in the living area and an overhaul on the colour scheme throughout, all adding a real sophisticated touch.

Stratford Mill has become an incredibly popular new neighbourhood in East London, positioned on the canal and close to the Queen Elizabeth Olympic Park. With excellent transport links it's easy to get from Stratford to most places in London. Pudding Mill Lane station is a 2 minute walk away from Stratford Mill which has connections to Canary Wharf and Lewisham via the DLR line. Stratford station is a 15 minute walk away, with direct connection to London Bridge, Liverpool Street, Bank and London City.

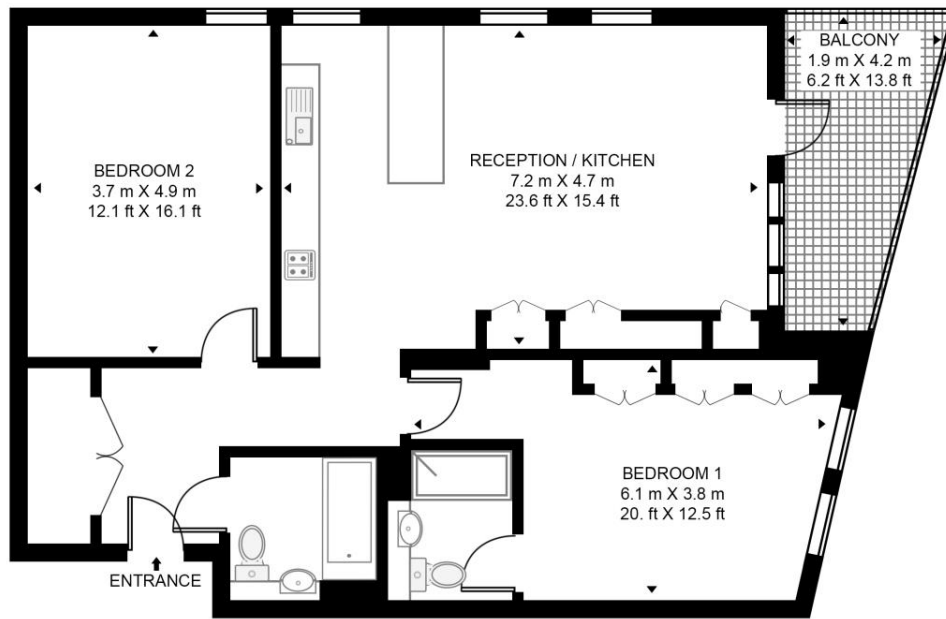
- Two bedrooms
- Two bathrooms (one en-suite)
- Secure development
- 5th Floor
- Ultra modern with top spec appliances
- High end upgrades
- Large Balcony
- Great Views
- Approx. 1016 sq. ft (94.4 sq. m)
- Leasehold

Floorplan

1,016 sq ft | 94 sq m

MALT HOUSE

APPROXIMATE GROSS INTERNAL FLOOR AREA 1016 SQ.FT (94.4 SQ.M)



This floor plan has been defined by the RICS Code of Measurement. This floor plan and all others are for approximate representative purposes only and upon usage is agreed to as such by the client.

WWW: hdvirtualart.com | TEL: 0203.974.1567 | EMAIL: info@hdvirtualart.com

Stratford
5 Station Street,
London E15 1DA
+4420 3147 1500
Lettingsstratford@eu.jll.com

Urban living, your way.

jll.co.uk/residential

© 2019 Jones Lang LaSalle IP, Inc. All rights reserved. All information contained herein is from sources deemed reliable; however, no representation or warranty is made to the accuracy thereof.

