



Gooch House, Telcon Way, Greenwich, London SE10 0XJ



Gooch House, Telcon Way, Greenwich, SE10

Leasehold

A particular large and spacious one bedroom apartment on the 1st floor of this amazing premier development located in North Greenwich peninsula close to the O2.

Key Features

- 1 Bedroom
- 1 Bathroom
- South-facing large terrace
- Close to North Greenwich (Jubilee)
- Communal internal courtyard
- Moments from the River Thames
- No onward chain
- EPC: B

Beautifully presented throughout, this apartment comprises entrance hall, open-plan kitchen living room with access onto a south facing large terrace, a good sized bedroom, family bathroom and storage cupboard.

This development is well located, moments from the river. Close to Central Greenwich which offers an excellent array of shops, bars and restaurants together with the Jubilee Line extension plus cable car service, along with the Royal Park.

Early viewings are highly recommended as this property comes with no onward chain.



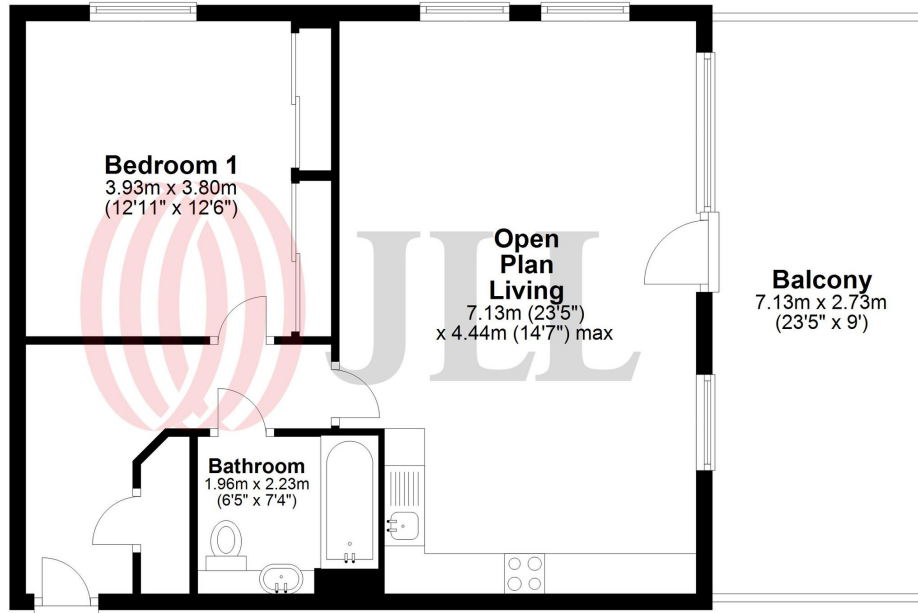






First Floor

Approx. 59.5 sq. metres (640.5 sq. feet)



Total area: approx. 59.5 sq. metres (640.5 sq. feet)

Floor Plan measurements are approximate and are for illustrative purposes only. While we do not doubt the floor plans accuracy, we make no guarantee, warranty or representation as to the accuracy and completeness of the floor plan.

Plan produced using PlanUp.

22 College Approach,
Greenwich, SE10 9HY

Sales, Lettings & Property Management

Tel: 020 8858 9986

residential.jll.co.uk

