

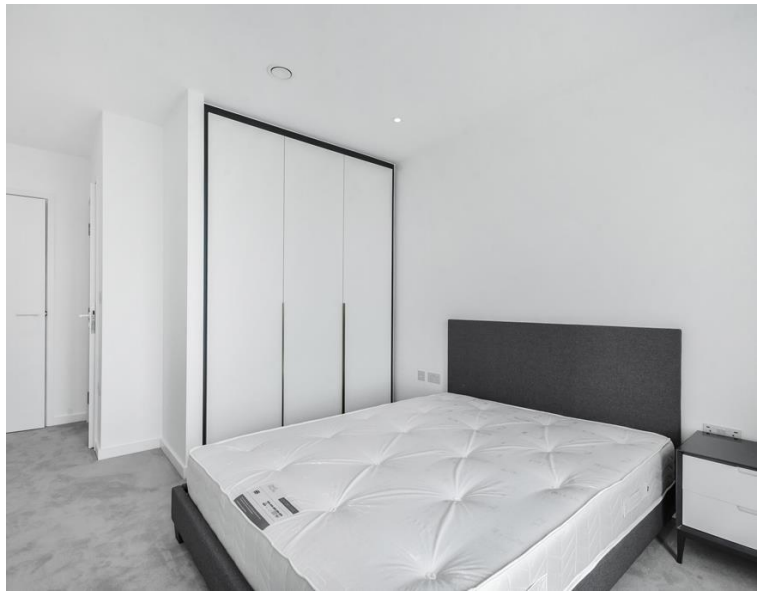


Cendal Crescent, London E1

Price £695 per week - Furnished







Description

JLL are delighted to present a brand new two bedroom apartment in the final phase of Silk District, E1, conveniently located for access to the City of London.

Offering great living space and boasting 766sq ft. Offered fully furnished, this 19th floor apartment will comprise an open plan living room and integrated kitchen, two large double bedrooms, with large fitted wardrobes in the master bedroom, two bathrooms with porcelain finish, tiled flooring throughout good storage space.

The Silk District is a brand new development from Mount Anvil and offers residents fantastic amenities which include 24 hour concierge, on site gym, cinema room, rooftop gardens and resident's lounge. The development is within easy reach of the City of London and in the heart of the Whitechapel regeneration area, approximately 0.3 miles from Whitechapel Underground / Crossrail station.

As well as paying the rent, you may also be required to make the following permitted payments. If your tenancy does not qualify as an AST, additional fees may apply. Please visit jll.co.uk/fees for details of fees which may be payable when renting a property.

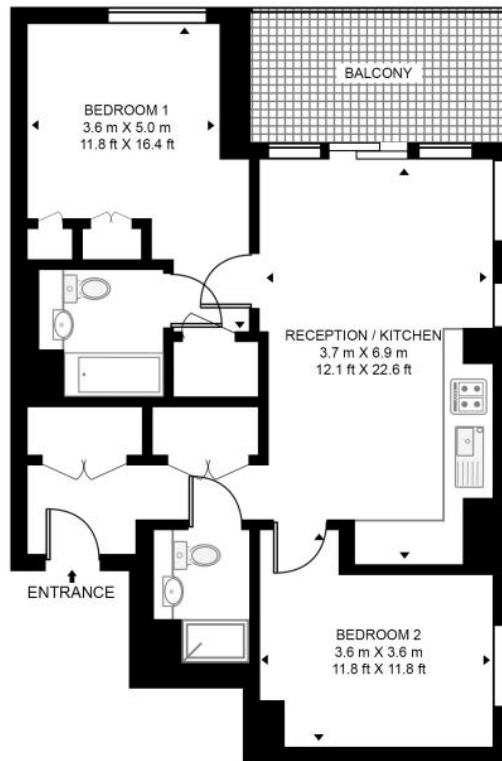
- 2 large double bedrooms
- 2 bathrooms
- Large fitted wardrobes
- Residents facilities including a gym, cinema room & rooftop garden
- Fully furnished
- 0.3 miles from Whitechapel Underground/Crossrail
- approx. 766 sq ft.
- EPC: B

Floorplan

766 sq ft | 71 sq m

BOUCHON POINT, E1

APPROXIMATE GROSS INTERNAL FLOOR AREA 767 SQ.FT (71.3 SQ.M)



Whilst every attempt has been made to ensure the accuracy of the floor plan contained here, measurements of door, windows, rooms and any other items are approximate and no responsibility is taken for any error, omission, or mis-statement. The plan for illustrative purposes only and should be used as such by any prospective purchaser. The services, system and appliances shown have not been tested and no guarantee as to their operability or efficiency can be given.

City
25 Walbrook The Walbrook
Building,
London EC4N 8AF
+4420 7337 4000

Urban living, your way.

jll.co.uk/residential

© 2019 Jones Lang LaSalle IP, Inc. All rights reserved. All information contained herein is from sources deemed reliable; however, no representation or warranty is made to the accuracy thereof.

