



Exchange Court, London WC2R

Price £995 per week - Furnished







Description

The apartment comprises a large reception room leading through to the modern open plan kitchen which is ideal for entertaining, a master suite with en-suite bathroom and dressing area, a second double bedroom with en-suite shower room and access to a private patio.

The apartment is finished to a high standard throughout, with wooden flooring and furnished beautifully. Exchange Court is situated just moments from the shops, restaurants, and entertainment facilities that Covent Garden and the West End have to offer.

As well as paying the rent, you may also be required to make some additional permitted payments. If your tenancy does not qualify as an AST, additional fees may apply. Please visit jll.co.uk/fees for details of fees which may be payable when renting a property.

- 2 Double bedrooms
- 2 Bathrooms (en suite)
- Reception room
- Open plan kitchen
- Patio area
- Ground/lower ground floor
- Approx. 932 sq ft (86.54 sq m)
- EPC: C

Floorplan

932 sq ft | 87 sq m

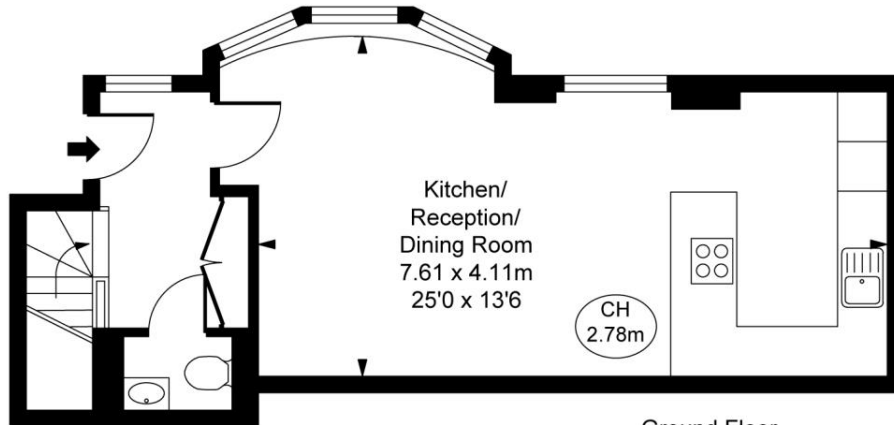
Exchange Court, WC2R

Approximate Gross Internal Area
86.54 sq m / 932 sq ft

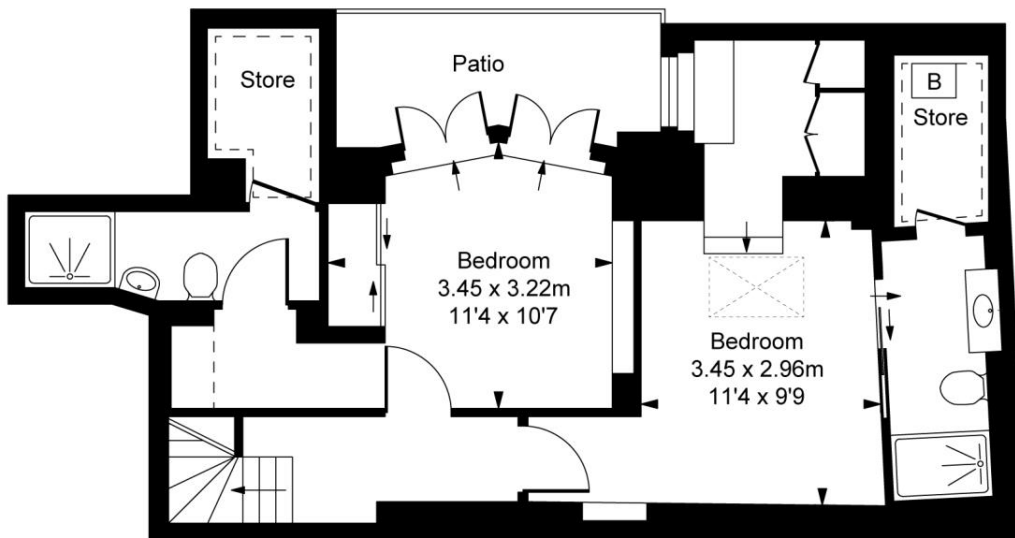


(Including restricted height
under 1.5m [- - - - -])

(CH = Ceiling Heights)



Ground Floor
Approximate Gross Internal Area
36.80 sq m / 396 sq ft



Lower Ground Floor
Approximate Gross Internal Area
49.74 sq m / 535 sq ft

This plan is not to scale. It is for guidance and not for valuation purposes.
All measurements and areas are approximate only, and have been prepared in accordance with the current edition of the RICS Code of Measuring Practice.
© Fulham Performance

Mayfair and Marylebone
13a St George Street,
London W1S 2FQ
+44 207 399 5550
mayfair@jll.com

Urban living, your way.

jll.co.uk/residential

© 2019 Jones Lang LaSalle IP, Inc. All rights reserved. All information contained herein is from sources deemed reliable; however, no representation or warranty is made to the accuracy thereof.

